

Satellite imagery from FireWatch.

At a glance

The following table compares current month data with the previous month and the same time previous year.

Service/Product description	Comparison		
	Oct 2015	Sep 2015	Oct 2014
Total Document Lodgements	27,105	27,270 ↘ 0.61%	31,816 ↘ 14.81%
Transfer Document Lodgements	6,204	6,106 ↗ 1.60%	7,759 ↘ 20.04%
Mortgage Lodgements	7,772	7,486 ↗ 3.82%	8,937 ↘ 13.04%
Searches	143,355	139,497 ↗ 2.77%	166,408 ↘ 13.85%
Electronic Advice of Sale Lodgements	5,799	5,602 ↗ 3.52%	7,443 ↘ 22.09%
Subdivisional Lots Created	1,781	1,252 ↗ 42.25%	1,602 ↗ 11.17%
Strata Lots Created	1,343	852 ↗ 57.63%	1,096 ↗ 22.54%
New Lots Created	3,124	2,104 ↗ 48.48%	2,698 ↗ 15.79%
Strata Plan and Survey Strata Plan Lodgements	271	195 ↗ 38.97%	208 ↗ 30.29%

Better firefighting tools - a national first

In a national first, authorities and the community will be able to use satellite data to identify fires as small as 375 metres in length using cutting edge technology available on Landgate's FireWatch-Pro and Aurora websites.

Landgate Chief Executive Mike Bradford said until now, authorities could only use satellite imagery to see fires one kilometre or larger.

The breakthrough was made by staff at Landgate's Satellite Remote Sensing Services (SRSS) who fine-tuned data provided by United States' owned satellites.

Mr Bradford said the advancement was an example of Landgate's innovative culture.

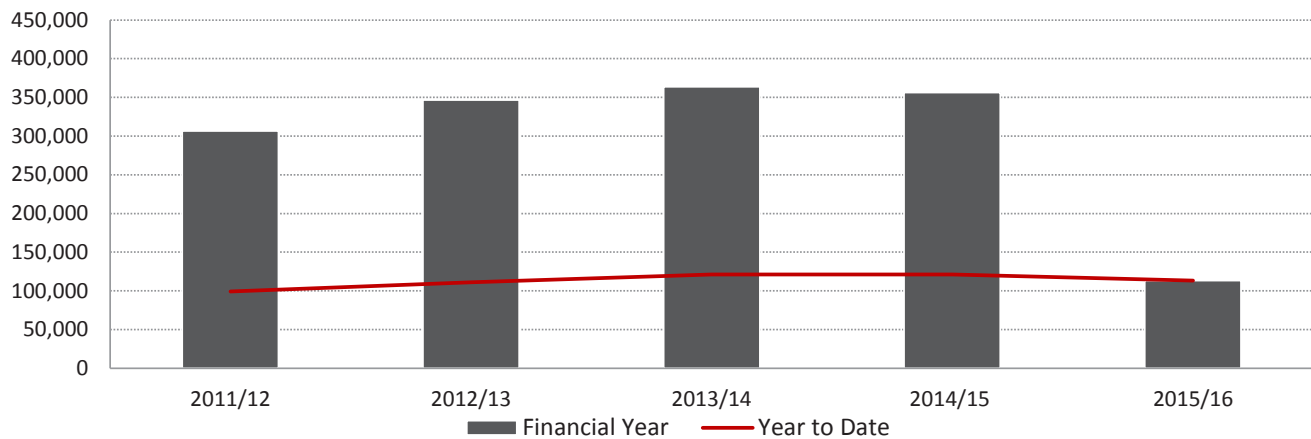
"Staff at the SRSS worked hard to adapt the software to better meet the needs of fire authorities in Western Australia and across the nation," Mr Bradford said.

"This improved technology means emergency workers and the community will be getting better definition of a fire front at a smaller scale.

"They will be able to detect fires twice a day as small as 375 metres, which is about two football fields in length and up to four times more sensitive than any previous satellite-based fire detection system."

Total Document Lodgements, by Financial Year

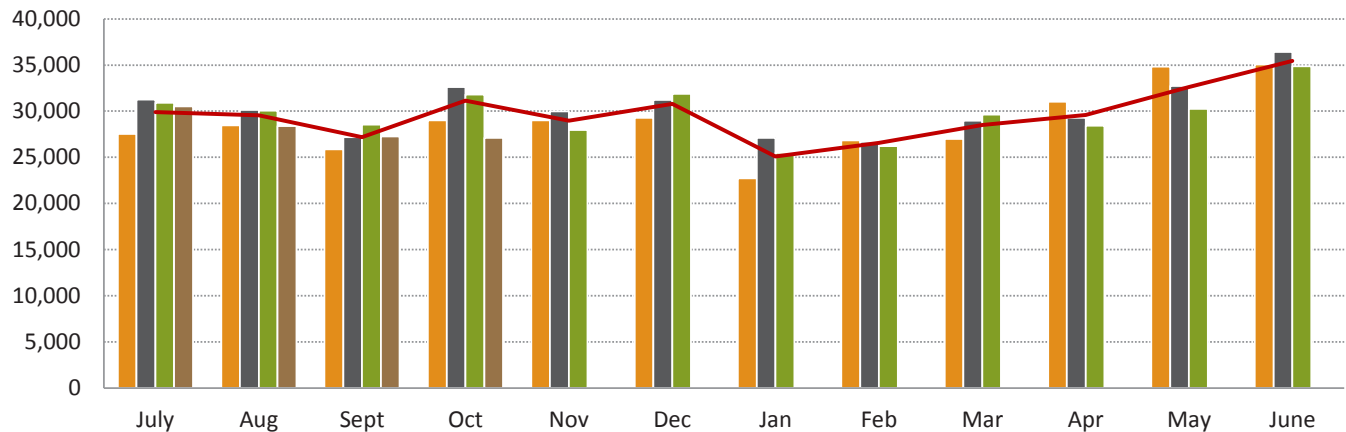
Total document lodgements 2015/16 (113,276) reflect a 6.65% decrease when compared to the same time 2014/15 (121,342).



Financial Year	11/12	12/13	13/14	14/15	15/16 YTD
Total Lodgements July to June	306,558	346,610	363,477	356,010	
Total Lodgements Year to Date	99,206	110,850	121,161	121,342	113,276

Total Document Lodgements, by month

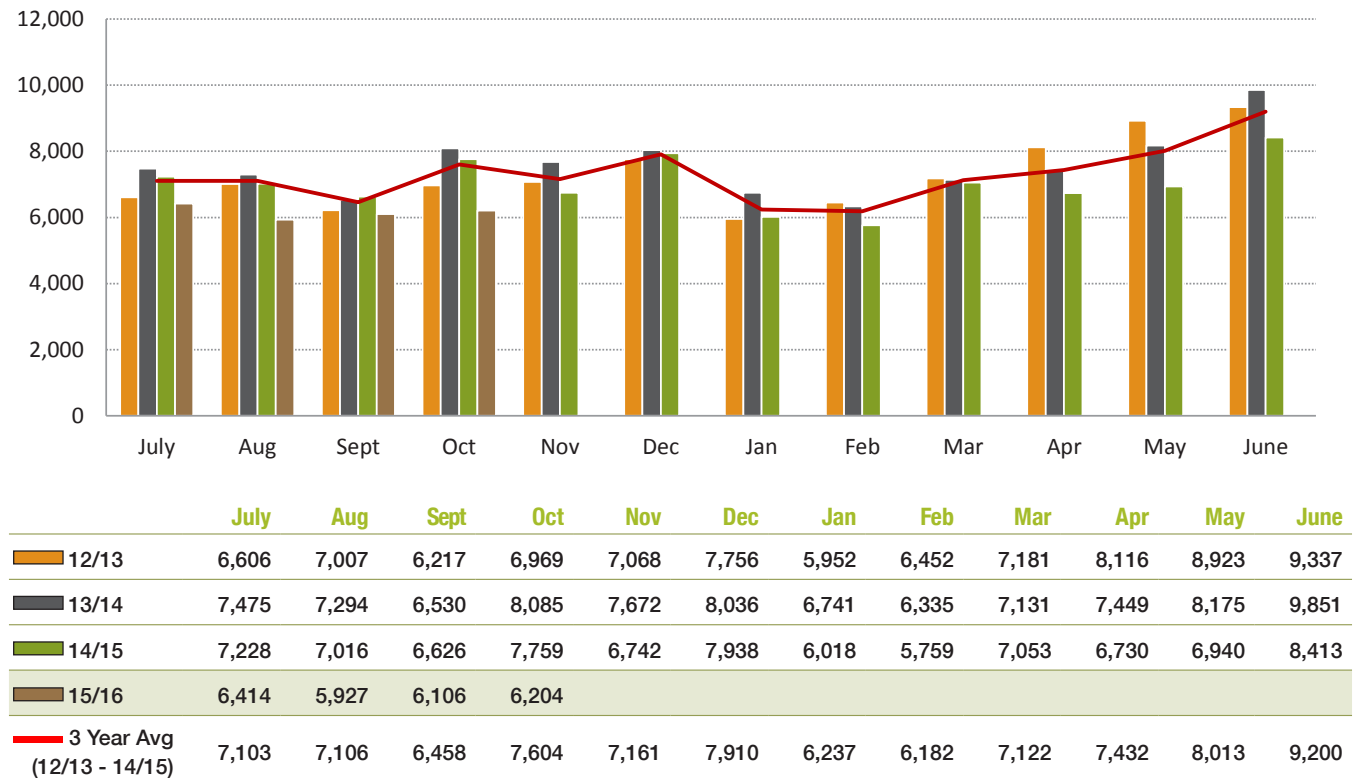
The number of documents lodged in October 2015 (27,105) decreased 0.61% from the previous month (27,270) and decreased 14.81% from October 2014 (31,816).



	July	Aug	Sept	Oct	Nov	Dec	Jan	Feb	Mar	Apr	May	June
12/13	27,515	28,481	25,847	29,007	29,006	29,264	22,732	26,834	26,984	31,041	34,828	35,071
13/14	31,263	30,118	27,174	32,606	29,965	31,201	27,093	26,669	28,956	29,261	32,748	36,423
14/15	30,898	30,068	28,560	31,816	27,949	31,898	25,483	26,213	29,617	28,417	30,239	34,852
15/16	30,525	28,376	27,270	27,105								
3 Year Avg (12/13 - 14/15)	29,892	29,556	27,194	31,143	28,973	30,788	25,103	26,572	28,519	29,573	32,605	35,449

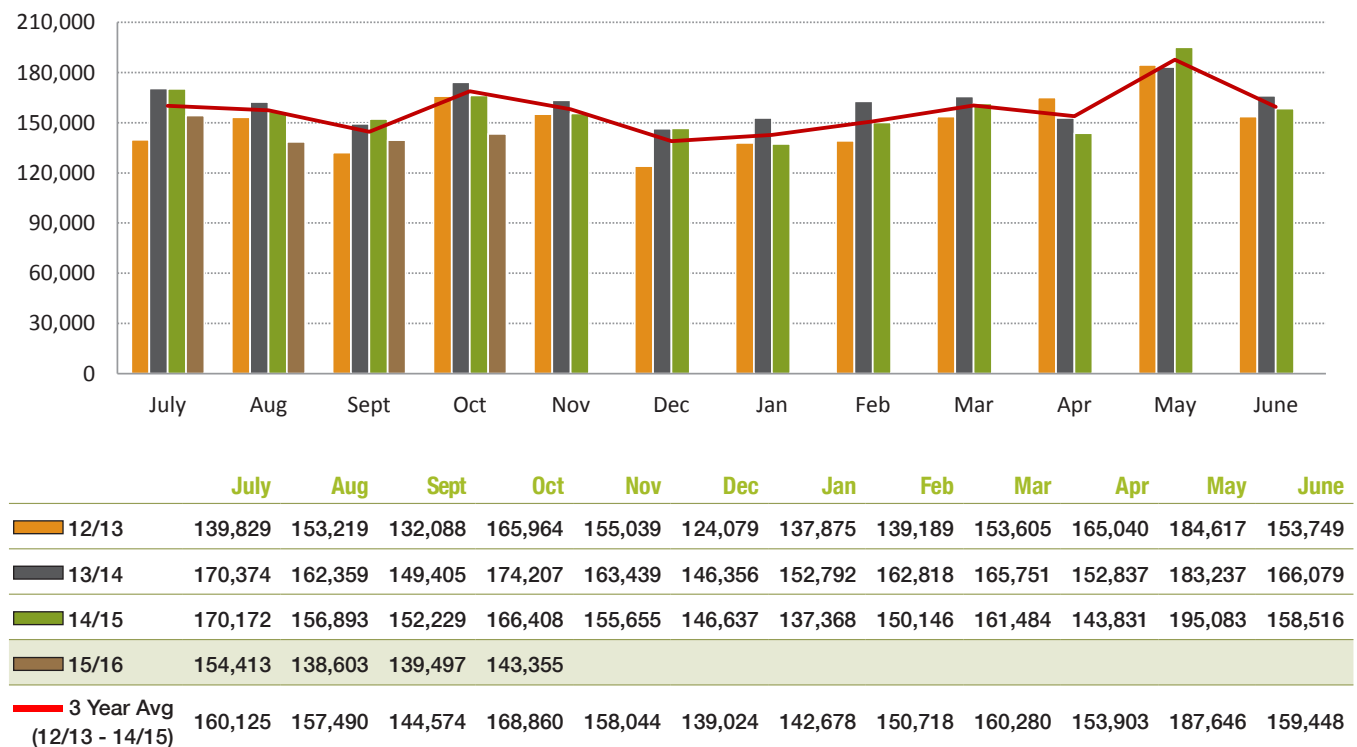
Transfer Lodgements, by month

Transfer documents lodged in October 2015 (6,204) increased 1.60% from the previous month (6,106) and decreased 20.04% from October 2014 (7,759). The number of mortgages lodged during October 2015 (7,772) increased 3.82% from the previous month (7,486) and decreased 13.04% from October 2014 (8,937).



Search Activities, by month

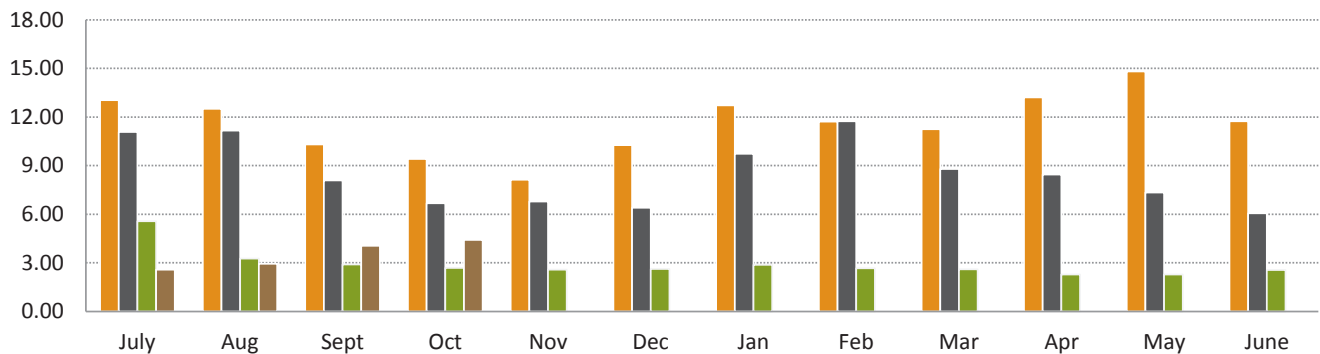
The number of searches for October 2015 (143,355) increased 2.77% from the previous month (139,497) and decreased 13.85% from October 2014 (166,408).



Time to register a transaction against a Certificate of Title, by month

Target: 75% of documents within 5.2 days

During October 2015 the average number of days to register a transaction against a Certificate of Title was 4.41 days, an increase compared to the previous month (4.06 days).

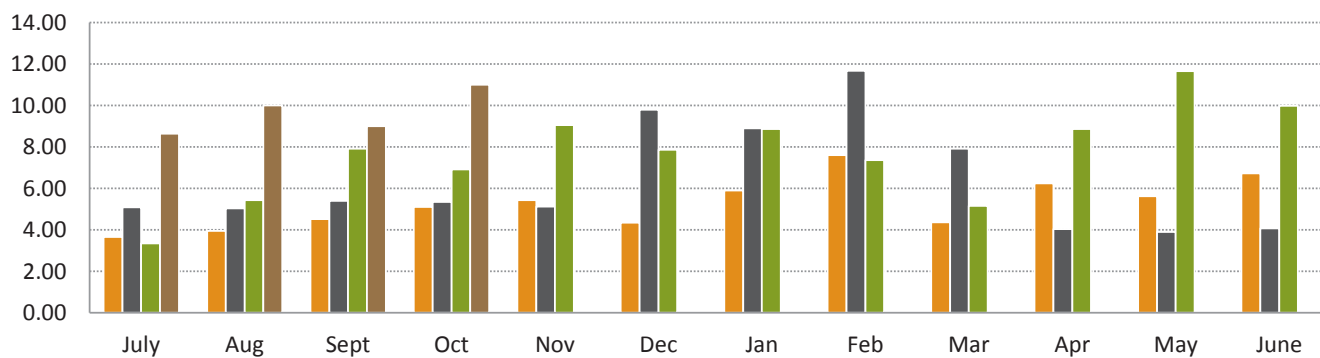


	July	Aug	Sept	Oct	Nov	Dec	Jan	Feb	Mar	Apr	May	June
12/13	13.05	12.50	10.31	9.42	8.13	10.26	12.72	11.72	11.25	13.20	14.82	11.74
13/14	11.08	11.16	8.08	6.68	6.79	6.41	9.73	11.73	8.80	8.45	7.35	6.07
14/15	5.56	3.26	2.90	2.68	2.59	2.62	2.88	2.66	2.61	2.28	2.29	2.55
15/16	2.57	2.95	4.06	4.41								

Time to register a Certificate of Title for a large subdivision, by month

Target: 5 days

During October 2015 the average number of days to register a Certificate of Title over large subdivisions was 11.00 days, an increase compared to the previous month (9.00 days).

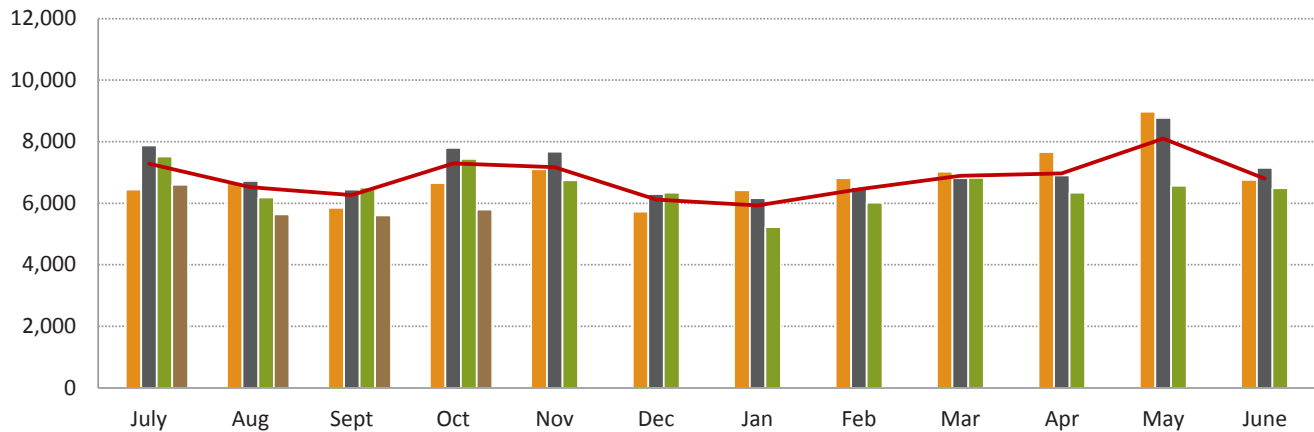


	July	Aug	Sept	Oct	Nov	Dec	Jan	Feb	Mar	Apr	May	June
12/13	3.66	3.95	4.52	5.10	5.44	4.35	5.89	7.60	4.36	6.24	5.63	6.72
13/14	5.08	5.03	5.40	5.35	5.12	9.79	8.90	11.68	7.91	4.04	3.89	4.07
14/15	3.35	5.43	7.91	6.91	9.05	7.86	8.87	7.36	5.15	8.87	11.66	9.98
15/16	8.64*	10*	9*	11*								

* Please Note: estimated figure

Electronic Advice of Sale (EAS) lodgements, by month

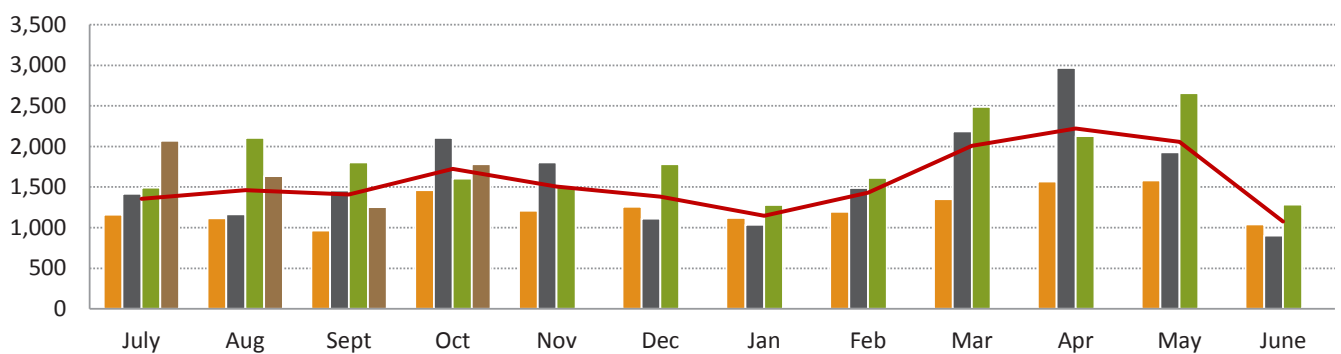
A total of 5,799 lodgements were registered during October 2015, a 3.52% increase from the previous month (5,602) and a 22.09% decrease from October 2014 (7,443).



	July	Aug	Sept	Oct	Nov	Dec	Jan	Feb	Mar	Apr	May	June
12/13	6,446	6,675	5,853	6,657	7,109	5,731	6,418	6,818	7,030	7,663	8,975	6,763
13/14	7,877	6,720	6,448	7,797	7,678	6,296	6,165	6,522	6,817	6,905	8,767	7,149
14/15	7,524	6,184	6,507	7,443	6,743	6,345	5,220	6,015	6,821	6,345	6,565	6,491
15/16	6,599	5,643	5,602	5,799								
3 Year Avg (12/13 - 14/15)	7,282	6,526	6,269	7,299	7,177	6,124	5,934	6,452	6,889	6,971	8,102	6,801

Number of subdivisional lots, by month

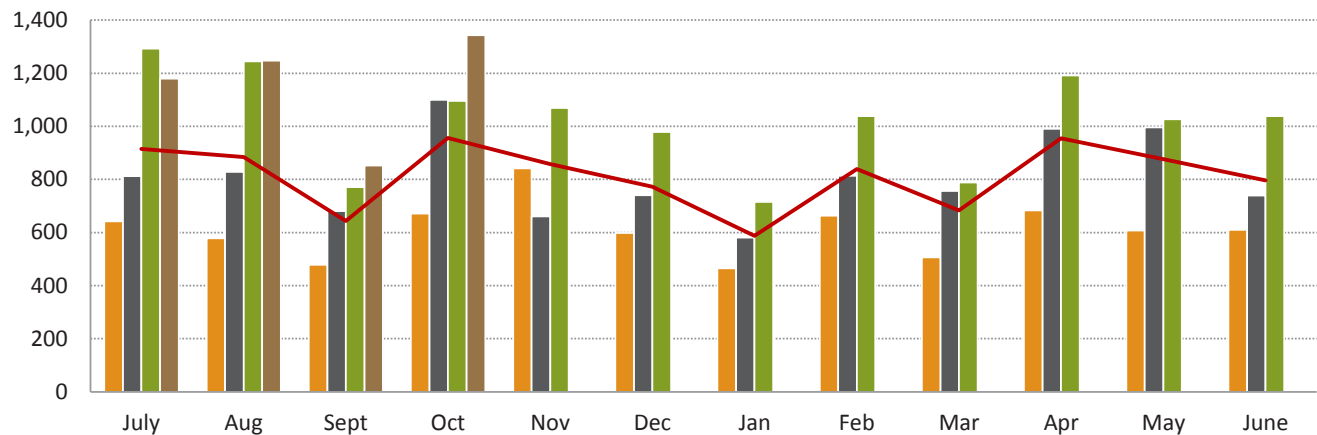
There were 188 Freehold Survey Deposited Plans lodged during October 2015 creating 1,781 subdivisional lots, a 42.25% increase from the previous month (1,252) and an 11.17% increase from October 2014 (1,602).



	July	Aug	Sept	Oct	Nov	Dec	Jan	Feb	Mar	Apr	May	June
12/13	1,158	1,115	963	1,460	1,210	1,259	1,121	1,195	1,352	1,567	1,581	1,041
13/14	1,418	1,162	1,459	2,104	1,803	1,110	1,037	1,487	2,186	2,965	1,927	904
14/15	1,493	2,106	1,803	1,602	1,503	1,781	1,281	1,612	2,487	2,128	2,658	1,284
15/16	2,072	1,634	1,252	1,781								
3 Year Avg (12/13 - 14/15)	1,356	1,462	1,408	1,722	1,505	1,383	1,146	1,431	2,008	2,220	2,055	1,076

Number of Strata Title Lots, by month

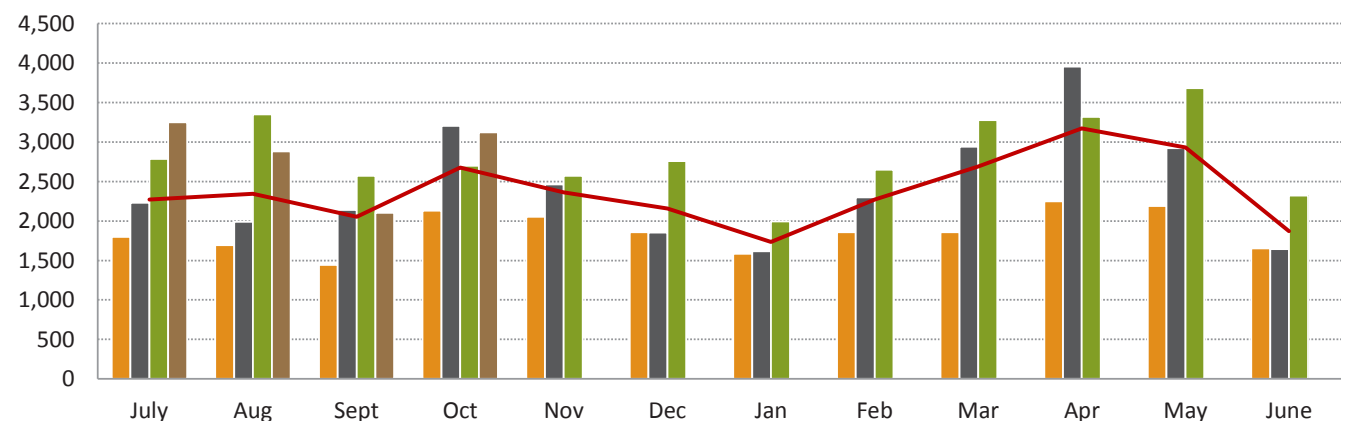
During October 2015, 271 strata plans were lodged creating 1,343 strata lots, a 57.63% increase from the previous month (852) and a 22.54% increase from October 2014 (1,096).



	July	Aug	Sept	Oct	Nov	Dec	Jan	Feb	Mar	Apr	May	June
12/13	642	578	479	671	842	598	465	664	507	683	608	610
13/14	812	828	681	1,100	661	741	581	814	756	990	996	739
14/15	1,292	1,245	771	1,096	1,069	979	715	1,038	789	1,191	1,026	1,039
15/16	1,179	1,247	852	1,343								
3 Year Avg (12/13 - 14/15)	915	884	644	956	857	773	587	839	684	955	877	796

Number of New Lots, by month

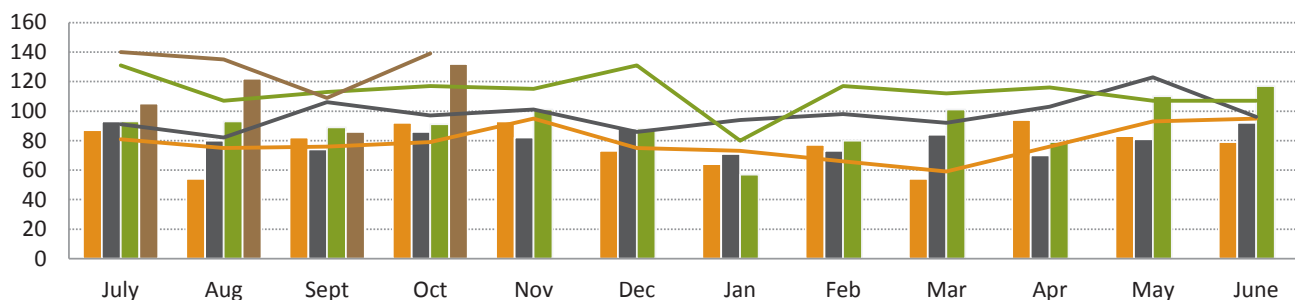
A total of 3,124 new lots were created during October 2015, a 48.48% increase from the previous month (2,104) and a 15.79% increase from October 2014 (2,698).



	July	Aug	Sept	Oct	Nov	Dec	Jan	Feb	Mar	Apr	May	June
12/13	1,800	1,693	1,442	2,131	2,052	1,857	1,586	1,859	1,859	2,250	2,189	1,651
13/14	2,230	1,990	2,140	3,204	2,464	1,851	1,618	2,301	2,942	3,955	2,923	1,643
14/15	2,785	3,351	2,574	2,698	2,572	2,760	1,996	2,650	3,276	3,319	3,684	2,323
15/16	3,251	2,881	2,104	3,124								
3 Year Avg (12/13 - 14/15)	2,272	2,345	2,052	2,678	2,363	2,156	1,733	2,270	2,692	3,175	2,932	1,872

Strata Plans (SP) and Survey Strata Plans (SSP) lodged, by month

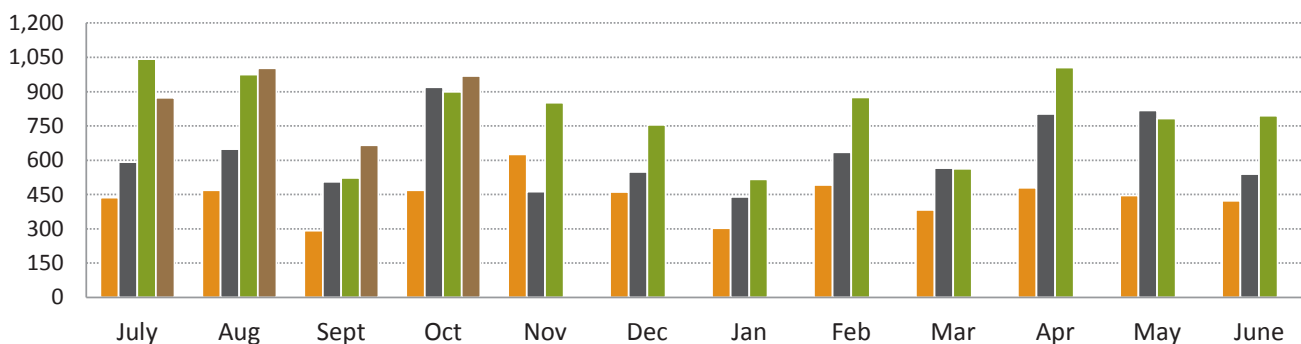
A total of 271 Strata Plans and Survey Strata Plans were lodged in October 2015, a 38.97% increase from the previous month (195) and a 30.29% increase from October 2014 (208).



	July	Aug	Sept	Oct	Nov	Dec	Jan	Feb	Mar	Apr	May	June
12/13 SP	87	54	82	92	93	73	64	77	54	94	83	79
12/13 SSP	81	75	76	79	95	75	73	66	59	76	93	95
13/14 SP	93	80	74	86	82	88	71	73	84	70	81	92
13/14 SSP	91	82	106	97	101	86	94	98	92	103	123	96
14/15 SP	93	93	89	91	101	88	57	80	101	79	110	117
14/15 SSP	131	107	113	117	115	131	80	117	112	116	107	107
15/16 SP	105	122	86	132								
15/16 SSP	140	135	109	139								

Strata Plans (SP) and Survey Strata Plans (SSP) lots created requiring WAPC approval, by month

A total of 968 lots were created requiring WAPC approval in October 2015, a 45.56% increase from the previous month (665) and a 7.68% increase from October 2014 (899).

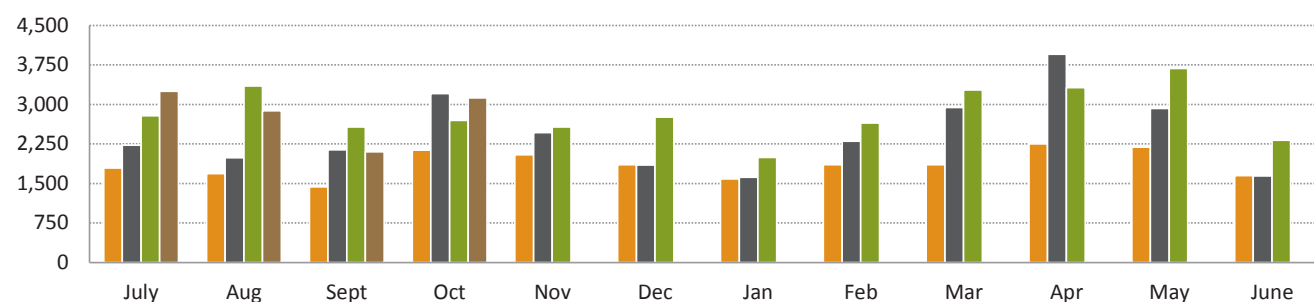


	July	Aug	Sept	Oct	Nov	Dec	Jan	Feb	Mar	Apr	May	June
12/13 WAPC	437	469	292	469	625	461	302	491	382	480	445	423
12/13 WAPC EX	205	109	187	202	217	137	163	173	125	203	163	187
13/14 WAPC	592	649	506	919	463	549	439	635	566	803	817	539
13/14 WAPC EX	220	179	175	181	198	192	142	179	190	187	179	200
14/15 WAPC	1,043	975	522	899	852	755	516	874	562	1,005	783	795
14/15 WAPC EX	249	270	249	197	217	224	199	164	227	186	243	244
15/16 WAPC	873	1,003	665	968								
15/16 WAPC EX	306	244	187	375								

Note: "Ex" represents Exempt

Strata Lots (SL) created as a % of all lots created, by month

Strata lots represented 59.57% of All Lots Created in October 2015 (3,124).



	July	Aug	Sept	Oct	Nov	Dec	Jan	Feb	Mar	Apr	May	June
12/13 All Lots	1,796	1,690	1,433	2,131	2,045	1,854	1,586	1,859	1,859	2,250	2,189	1,650
12/13 % SL	35.75	34.20	33.43	32.84	41.17	32.25	29.32	35.72	27.27	30.36	27.78	36.95
13/14 All Lots	2,230	1,990	2,140	3,204	2,464	1,851	1,618	2,301	2,942	3,955	2,923	1,643
13/14 % SL	36.41	41.61	31.82	34.33	26.83	40.03	35.91	35.38	25.70	25.03	34.07	44.98
14/15 All Lots	2,785	3,351	2,574	2,698	2,572	2,760	1,996	2,650	3,276	3,319	3,684	2,323
14/15 % SL	46.39	37.15	29.95	40.62	41.56	35.47	35.82	39.17	24.08	35.88	27.85	44.73
14/15 All Lots	3,251	2,881	2,104	3,124								
14/15 % SL	36.27	55.49	51.29	59.57								

Disclaimer

To the extent permitted by law, the Western Australian Land Information Authority trading as Landgate will in no way be liable to you or anyone else for any loss, damage or costs however caused (including through negligence) which may be directly or indirectly suffered arising from the use of or reliance on any information or data (including incomplete, out of date, wrong, inaccurate or misleading information or data) whether expressed or implied in the Report.

The information contained in this Report is provided by Landgate in good faith on an “as is” basis. The information is believed to be accurate and current at the date the Report was created. However changes in circumstances may affect the accuracy and completeness of the information. Landgate makes no representation or warranty as to the reliability, accuracy or completeness, merchantability or fitness for purpose of the information contained in this Report. You should not act on the basis of anything contained in this Report without first obtaining specific professional advice. It is not intended to provide the basis for any evaluation, decision or forecasting. You must make your own assessment of it and rely on it wholly at your own risk. Where there is any concern about accuracy and currency of the information in the Report, reference should be made to Landgate for verification.

To the extent permitted by law, all representations, warranties and other terms are excluded and where they cannot be excluded, any liability suffered arising out of use of the Report is limited to resupply.

Copyright

You may download and print the Report only for your personal and non-commercial use or use within your organisation for internal purposes, unless you have prior written approval.

Other than for the purposes of and subject to the conditions prescribed under the Copyright Act, you may not, in any form or by any means without Landgate’s prior written permission

- adapt, reproduce, store, distribute, transmit, print, display, perform, publish or create derivative works from any part of the Report; or
- commercialise any information, products or services obtained from any part of the Report.

Requests to use copyright material should be addressed to Landgate, PO Box 2222, Midland WA 6036. Telephone +61 (0)8 92737373 or email: customerservice@landgate.wa.gov.au.

Any authorised reproduction however altered, reformatted or redisplayed must acknowledge the source of the information and that Landgate is the owner of copyright.