



# Business Activity Profile

August 2016

## At a glance

The following table compares current month data with the previous month and the same time previous year.

| Service/Product description                   | Comparison |                  |                  |
|---|------------|------------------|------------------|
|   | Aug 2016   | Jul 2016         | Aug 2015         |
| Total Document Lodgements                     | 26,832     | 23,394<br>14.70% | 28,376<br>5.44%  |
| Transfer Lodgements                           | 5,754      | 4,990<br>15.31%  | 5,927<br>2.92%   |
| Mortgage Lodgements                           | 7,489      | 6,330<br>18.31%  | 7,554<br>0.86%   |
| Searches                                      | 130,631    | 121,355<br>7.64% | 138,603<br>5.75% |
| Electronic Advice of Sale Lodgements          | 5,332      | 5,236<br>1.83%   | 5,643<br>5.51%   |
| Subdivisional Lots Created                    | 1,376      | 1,052<br>30.80%  | 1,634<br>15.79%  |
| Strata Lots Created                           | 1,110      | 1,025<br>8.29%   | 1,247<br>10.99%  |
| New Lots Created                              | 2,486      | 2,077<br>19.69%  | 2,881<br>13.71%  |
| Strata Plan and Survey Strata Plan Lodgements | 237        | 191<br>24.08%    | 257<br>7.78%     |



Landgate recognised as the 22nd most innovative company in Australia.

### Landgate nationally recognised for innovation

Landgate has received national recognition for its innovation achievements by being named the 22nd most innovative company in Australia.

The Australian Financial Review 2016 **Most Innovative Companies** list was announced on 18 August during an awards ceremony in Sydney.

Landgate established an innovation program in 2008 and this year launched its location and innovation hub **SPUR**.

SPUR General Manager Jodi Cant said innovation was an integral part of Landgate's culture.

"Landgate's leadership across the innovation space has been widely acknowledged in Western Australia and it is fantastic to have this national recognition," Ms Cant said.

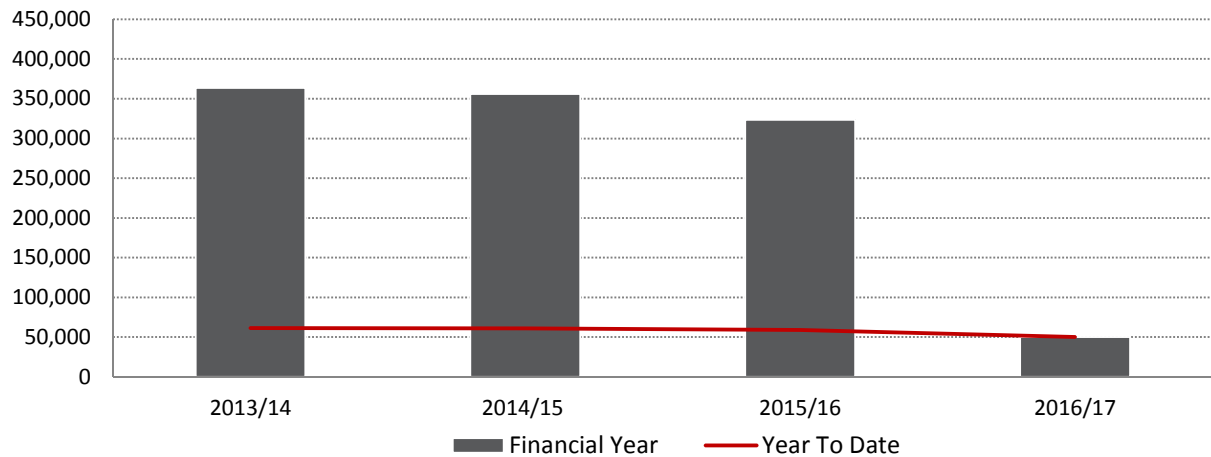
"This judging panel not only reviewed how innovation shapes our organisation, it also assessed two of our top innovations, the New Land Registry and Pastures from Space Plus.

"The New Land Registry is a cloud-based computing platform that has revolutionised the way land transactions are done in Western Australia by replacing inefficient, time consuming paper-based processing.

"Pastures from Space Plus is an online tool that uses satellite imagery and other data to empower farmers to make important management decisions about their properties."

## Total document lodgements, by financial year

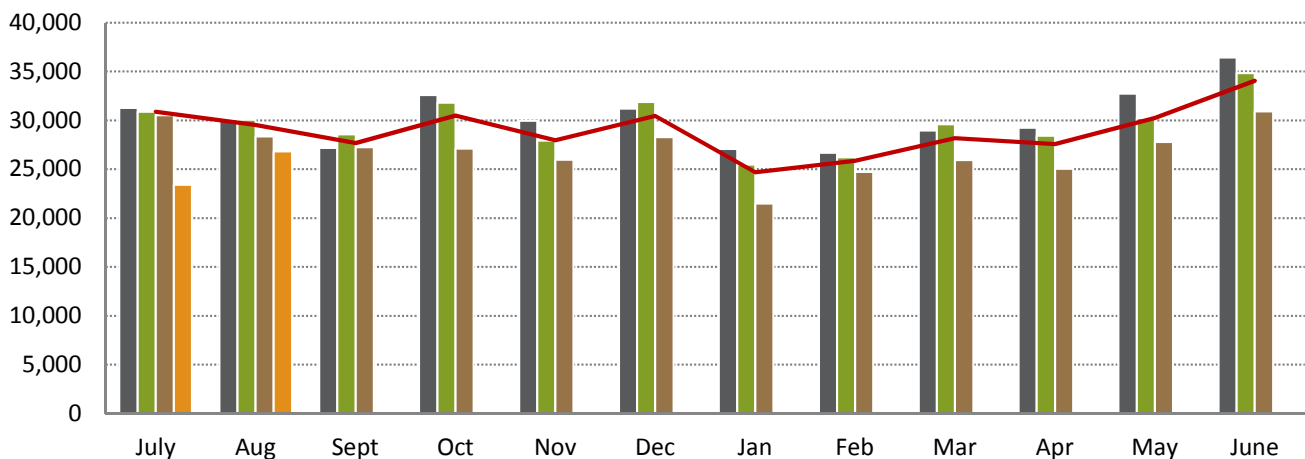
Total document lodgements 2016/17 year to date (50,226) reflect a 14.73% decrease when compared to the same time 2015/16 (58,901).



| Financial Year                | 13/14   | 14/15   | 15/16   | 16/17  |
|-------------------------------|---------|---------|---------|--------|
| Total Lodgements July to June | 363,477 | 356,010 | 323,474 |        |
| Total lodgements year to date | 61,381  | 60,966  | 58,901  | 50,226 |

## Total document lodgements, by month

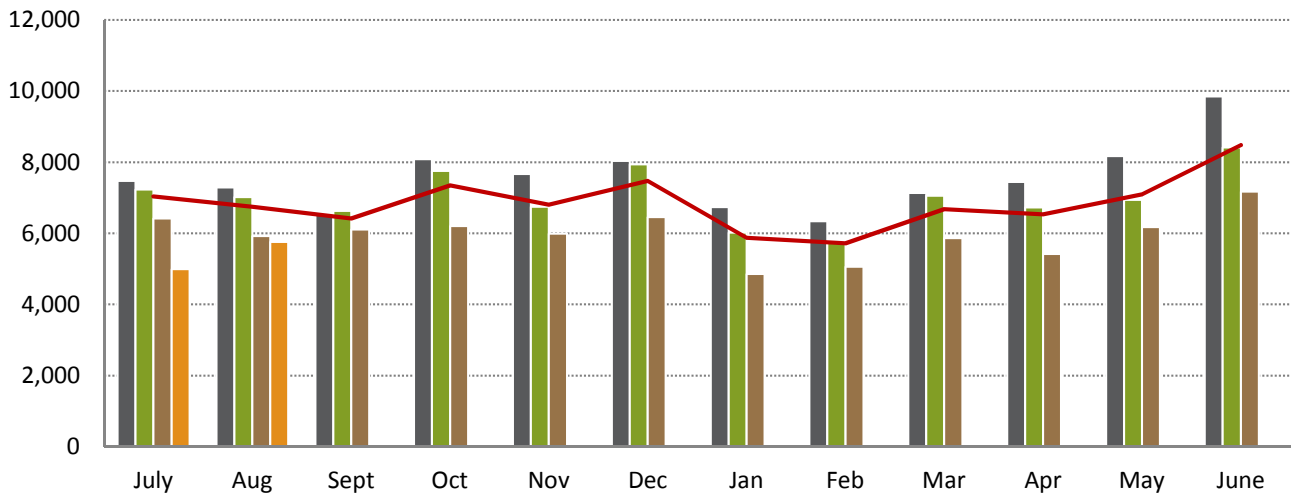
The number of documents lodged in August 2016 (26,832) increased 14.70% from the previous month (23,394) and decreased 5.44% from August 2015 (28,376).



|                            | July   | Aug    | Sept   | Oct    | Nov    | Dec    | Jan    | Feb    | Mar    | Apr    | May    | June   |
|----------------------------|--------|--------|--------|--------|--------|--------|--------|--------|--------|--------|--------|--------|
| 13/14                      | 31,263 | 30,118 | 27,174 | 32,606 | 29,965 | 31,201 | 27,093 | 26,669 | 28,956 | 29,261 | 32,748 | 36,423 |
| 14/15                      | 30,898 | 30,068 | 28,560 | 31,816 | 27,949 | 31,898 | 25,483 | 26,213 | 29,617 | 28,417 | 30,239 | 34,852 |
| 15/16                      | 30,525 | 28,376 | 27,270 | 27,105 | 25,982 | 28,291 | 21,495 | 24,723 | 25,930 | 25,042 | 27,801 | 30,934 |
| 16/17                      | 23,394 | 26,832 |        |        |        |        |        |        |        |        |        |        |
| 3 Year Avg (13/14 - 15/16) | 30,895 | 29,521 | 27,668 | 30,509 | 27,965 | 30,463 | 24,690 | 25,868 | 28,168 | 27,573 | 30,263 | 34,070 |

## Transfer lodgements, by month

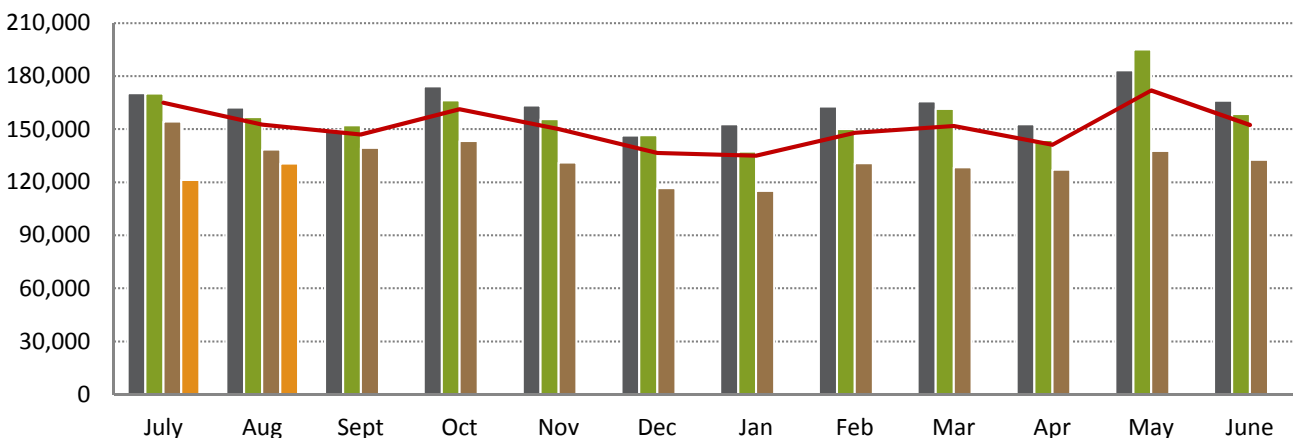
Transfer documents lodged in August 2016 (5,754) increased 15.31% from the previous month (4,990) and decreased 2.92% from August 2015 (5,927). The number of mortgages lodged during August 2016 (7,489) increased 18.31% from the previous month (6,330) and decreased 0.86% from August 2015 (7,554).



|                            | July  | Aug   | Sept  | Oct   | Nov   | Dec   | Jan   | Feb   | Mar   | Apr   | May   | June  |
|----------------------------|-------|-------|-------|-------|-------|-------|-------|-------|-------|-------|-------|-------|
| 13/14                      | 7,475 | 7,294 | 6,530 | 8,085 | 7,672 | 8,036 | 6,741 | 6,335 | 7,131 | 7,449 | 8,175 | 9,851 |
| 14/15                      | 7,228 | 7,016 | 6,626 | 7,759 | 6,742 | 7,938 | 6,018 | 5,759 | 7,053 | 6,730 | 6,940 | 8,413 |
| 15/16                      | 6,414 | 5,927 | 6,106 | 6,204 | 5,993 | 6,460 | 4,853 | 5,064 | 5,861 | 5,414 | 6,172 | 7,174 |
| 16/17                      | 4,990 | 5,754 |       |       |       |       |       |       |       |       |       |       |
| 3 Year Avg (13/14 - 15/16) | 7,039 | 6,746 | 6,421 | 7,349 | 6,802 | 7,478 | 5,871 | 5,719 | 6,682 | 6,531 | 7,096 | 8,479 |

## Search activities, by month

The number of searches for August 2016 (130,631) increased 7.64% from the previous month (121,355) and decreased 5.75% from August 2015 (138,603).

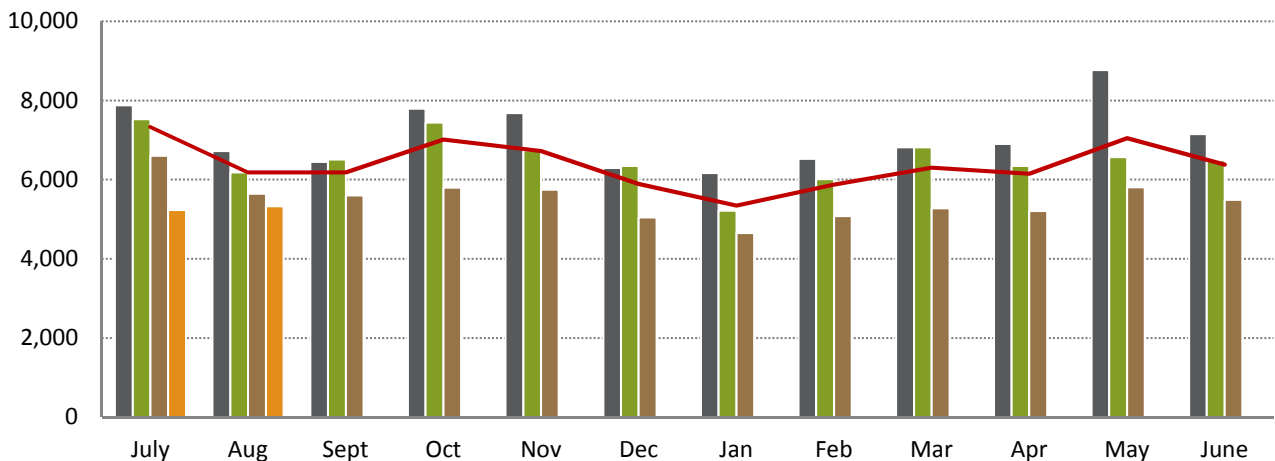


|                            | July    | Aug     | Sept    | Oct     | Nov     | Dec     | Jan     | Feb     | Mar     | Apr     | May     | June    |
|----------------------------|---------|---------|---------|---------|---------|---------|---------|---------|---------|---------|---------|---------|
| 13/14                      | 170,374 | 162,359 | 149,405 | 174,207 | 163,439 | 146,356 | 152,792 | 162,818 | 165,751 | 152,837 | 183,237 | 166,079 |
| 14/15                      | 170,172 | 156,893 | 152,229 | 166,408 | 155,655 | 146,637 | 137,368 | 150,146 | 161,484 | 143,831 | 195,083 | 158,516 |
| 15/16                      | 154,413 | 138,603 | 139,497 | 143,355 | 131,093 | 116,599 | 115,180 | 130,809 | 128,384 | 127,037 | 137,730 | 132,768 |
| 16/17                      | 121,355 | 130,631 |         |         |         |         |         |         |         |         |         |         |
| 3 Year Avg (13/14 - 15/16) | 164,986 | 152,618 | 147,044 | 161,323 | 150,062 | 136,531 | 135,113 | 147,924 | 151,873 | 141,235 | 172,017 | 152,454 |



## Electronic Advice of Sale (EAS) lodgements, by month

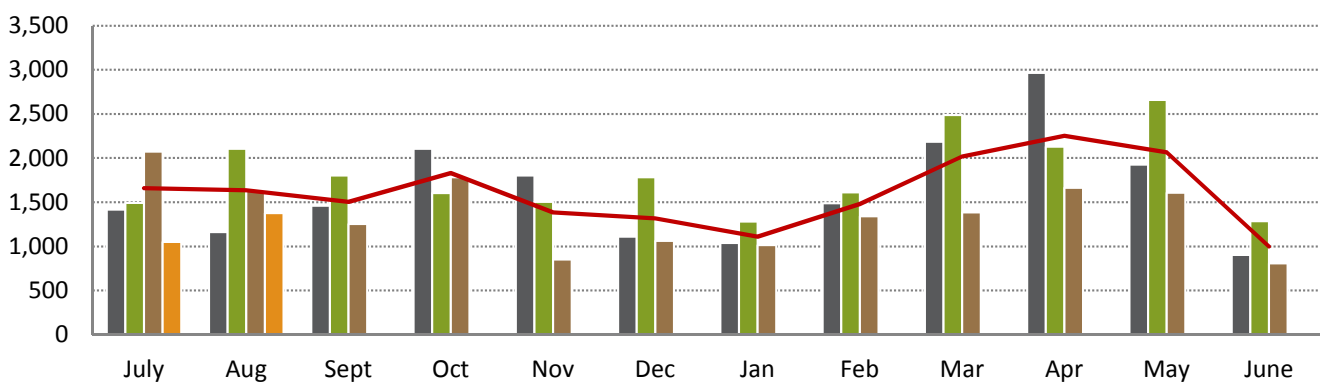
A total of 5,332 lodgements were registered during August 2016, a 1.83% increase from the previous month (5,236) and a 5.51% decrease from August 2015 (5,643).



|                               | July  | Aug   | Sept  | Oct   | Nov   | Dec   | Jan   | Feb   | Mar   | Apr   | May   | June  |
|-------------------------------|-------|-------|-------|-------|-------|-------|-------|-------|-------|-------|-------|-------|
| 13/14                         | 7,877 | 6,720 | 6,448 | 7,797 | 7,678 | 6,296 | 6,165 | 6,522 | 6,817 | 6,905 | 8,767 | 7,149 |
| 14/15                         | 7,524 | 6,184 | 6,507 | 7,443 | 6,743 | 6,345 | 5,220 | 6,015 | 6,821 | 6,345 | 6,565 | 6,491 |
| 15/16                         | 6,599 | 5,643 | 5,602 | 5,799 | 5,743 | 5,045 | 4,649 | 5,078 | 5,274 | 5,208 | 5,810 | 5,493 |
| 16/17                         | 5,236 | 5,332 |       |       |       |       |       |       |       |       |       |       |
| 3 Year Avg<br>(13/14 - 15/16) | 7,333 | 6,182 | 6,186 | 7,013 | 6,721 | 5,895 | 5,345 | 5,872 | 6,304 | 6,153 | 7,047 | 6,378 |

## Number of subdivisional lots, by month

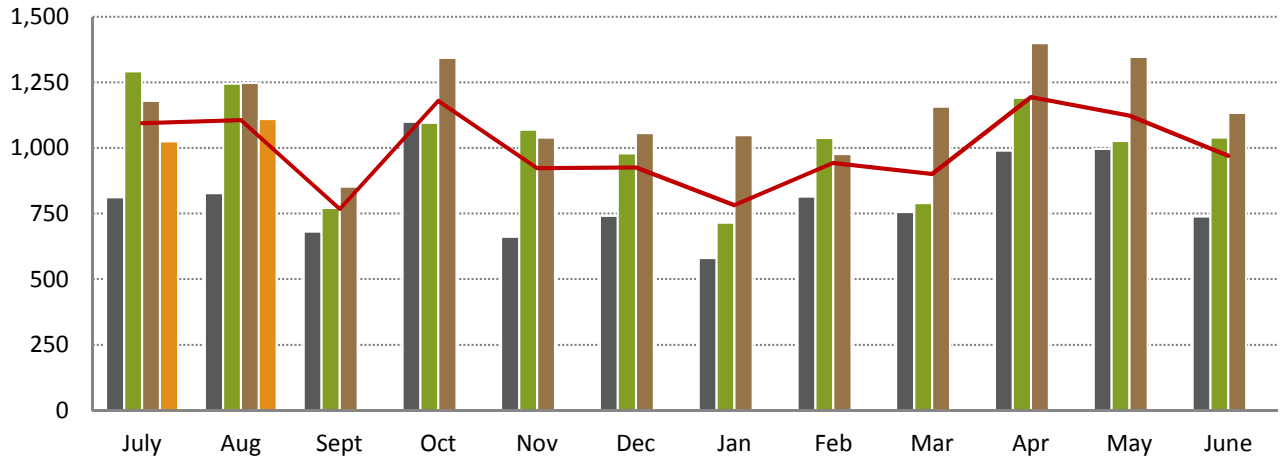
During August 2016, 1,376 sub-divisional lots were created, a 30.80% increase from the previous month (1,052) and a 15.79% decrease from July 2015 (1,634).



|                               | July  | Aug   | Sept  | Oct   | Nov   | Dec   | Jan   | Feb   | Mar   | Apr   | May   | June  |
|-------------------------------|-------|-------|-------|-------|-------|-------|-------|-------|-------|-------|-------|-------|
| 13/14                         | 1,418 | 1,162 | 1,459 | 2,104 | 1,803 | 1,110 | 1,037 | 1,487 | 2,186 | 2,965 | 1,927 | 904   |
| 14/15                         | 1,493 | 2,106 | 1,803 | 1,602 | 1,503 | 1,781 | 1,281 | 1,612 | 2,487 | 2,128 | 2,658 | 1,284 |
| 15/16                         | 2,072 | 1,634 | 1,252 | 1,781 | 851   | 1,061 | 1,014 | 1,343 | 1,383 | 1,665 | 1,609 | 807   |
| 16/17                         | 1,052 | 1,376 |       |       |       |       |       |       |       |       |       |       |
| 3 Year Avg<br>(13/14 - 15/16) | 1,661 | 1,635 | 1,505 | 1,829 | 1,386 | 1,317 | 1,111 | 1,481 | 2,019 | 2,253 | 2,065 | 998   |

## Number of strata title lots, by month

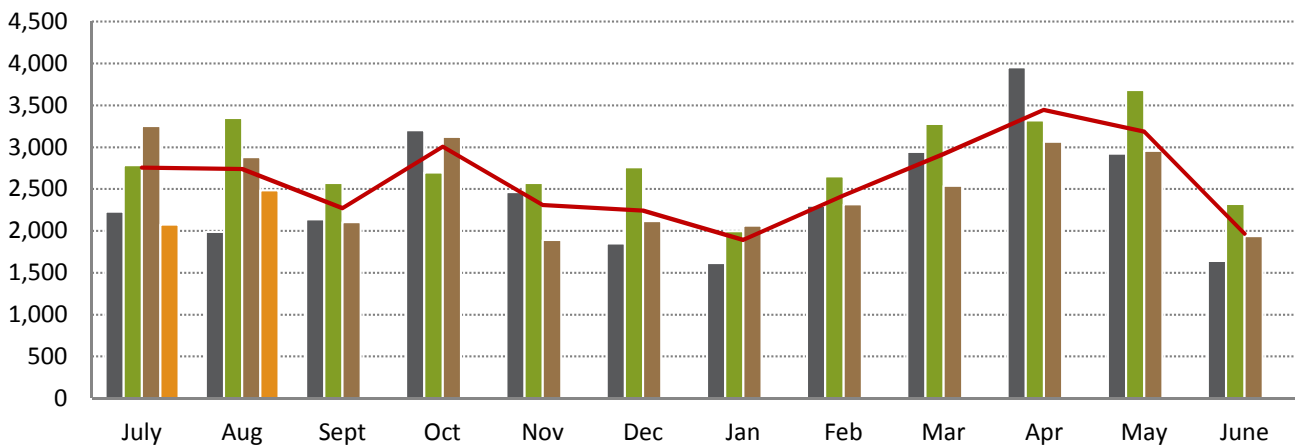
During August 2016, 237 strata plans were lodged creating 1,110 strata lots, a 8.29% increase from the previous month (1,025) and a 10.99% decrease from August 2015 (1,247).



|                            | July  | Aug   | Sept | Oct   | Nov   | Dec   | Jan   | Feb   | Mar   | Apr   | May   | June  |
|----------------------------|-------|-------|------|-------|-------|-------|-------|-------|-------|-------|-------|-------|
| 13/14                      | 812   | 828   | 681  | 1,100 | 661   | 741   | 581   | 814   | 756   | 990   | 996   | 739   |
| 14/15                      | 1,292 | 1,245 | 771  | 1,096 | 1,069 | 979   | 715   | 1,038 | 789   | 1,191 | 1,026 | 1,039 |
| 15/16                      | 1,179 | 1,247 | 852  | 1,343 | 1,039 | 1,057 | 1,049 | 976   | 1,157 | 1,399 | 1,347 | 1,133 |
| 16/17                      | 1,025 | 1,110 |      |       |       |       |       |       |       |       |       |       |
| 3 Year Avg (13/14 - 15/16) | 1,094 | 1,107 | 768  | 1,180 | 923   | 926   | 782   | 943   | 901   | 1,193 | 1,123 | 970   |

## Number of new lots, by month

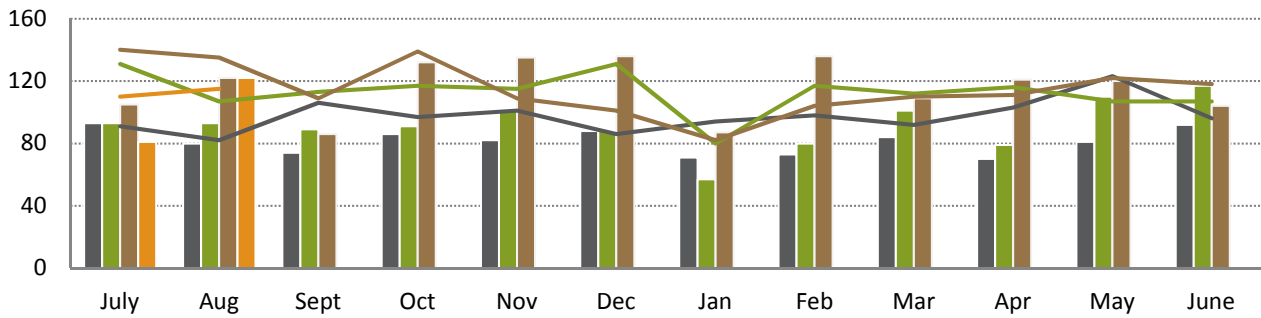
A total of 2,486 new lots were created during August 2016, a 19.69% increase from the previous month (2,077) and a 13.71% decrease from August 2015 (2,881).



|                            | July  | Aug   | Sept  | Oct   | Nov   | Dec   | Jan   | Feb   | Mar   | Apr   | May   | June  |
|----------------------------|-------|-------|-------|-------|-------|-------|-------|-------|-------|-------|-------|-------|
| 13/14                      | 2,230 | 1,990 | 2,140 | 3,204 | 2,464 | 1,851 | 1,618 | 2,301 | 2,942 | 3,955 | 2,923 | 1,643 |
| 14/15                      | 2,785 | 3,351 | 2,574 | 2,698 | 2,572 | 2,760 | 1,996 | 2,650 | 3,276 | 3,319 | 3,684 | 2,323 |
| 15/16                      | 3,251 | 2,881 | 2,104 | 3,124 | 1,890 | 2,118 | 2,063 | 2,319 | 2,540 | 3,064 | 2,956 | 1,940 |
| 16/17                      | 2,077 | 2,486 |       |       |       |       |       |       |       |       |       |       |
| 3 Year Avg (13/14 - 15/16) | 2,755 | 2,741 | 2,273 | 3,009 | 2,309 | 2,243 | 1,892 | 2,423 | 2,919 | 3,446 | 3,188 | 1,969 |

## Strata Plans (SP) and Survey Strata Plans (SSP) lodged, by month

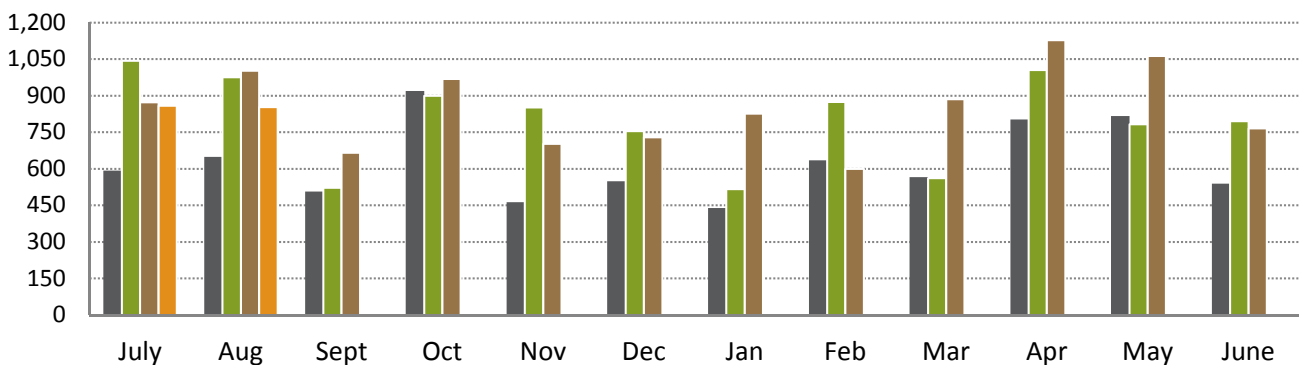
A total of 237 Strata Plans and Survey Strata Plans were lodged in August 2016, a 24.08% increase from the previous month (191) and a 7.78% decrease from August 2015 (257).



|           | July | Aug | Sept | Oct | Nov | Dec | Jan | Feb | Mar | Apr | May | June |
|-----------|------|-----|------|-----|-----|-----|-----|-----|-----|-----|-----|------|
| 13/14 SP  | 93   | 80  | 74   | 86  | 82  | 88  | 71  | 73  | 84  | 70  | 81  | 92   |
| 13/14 SSP | 91   | 82  | 106  | 97  | 101 | 86  | 94  | 98  | 92  | 103 | 123 | 96   |
| 14/15 SP  | 93   | 93  | 89   | 91  | 101 | 88  | 57  | 80  | 101 | 79  | 110 | 117  |
| 14/15 SSP | 131  | 107 | 113  | 117 | 115 | 131 | 80  | 117 | 112 | 116 | 107 | 107  |
| 15/16 SP  | 105  | 122 | 86   | 132 | 135 | 136 | 87  | 136 | 109 | 121 | 120 | 104  |
| 15/16 SSP | 140  | 135 | 109  | 139 | 109 | 101 | 82  | 104 | 110 | 111 | 122 | 118  |
| 16/17 SP  | 81   | 122 |      |     |     |     |     |     |     |     |     |      |
| 16/17 SSP | 110  | 115 |      |     |     |     |     |     |     |     |     |      |

## Strata Plans (SP) and Survey Strata Plans (SSP) lots created requiring WAPC approval, by month

A total of 853 lots were created requiring WAPC approval in August 2016, a 0.58% decrease from the previous month (858) and a 14.96% decrease from July 2015 (1,003).



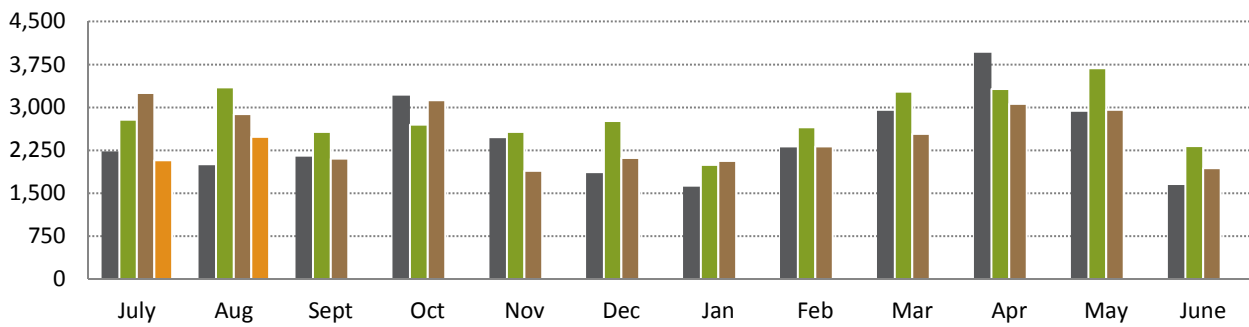
|               | July  | Aug   | Sept | Oct | Nov | Dec | Jan | Feb | Mar | Apr   | May   | June |
|---------------|-------|-------|------|-----|-----|-----|-----|-----|-----|-------|-------|------|
| 13/14 WAPC    | 592   | 649   | 506  | 919 | 463 | 549 | 439 | 635 | 566 | 803   | 817   | 539  |
| 13/14 WAPC EX | 220   | 179   | 175  | 181 | 198 | 192 | 142 | 179 | 190 | 187   | 179   | 200  |
| 14/15 WAPC    | 1,043 | 975   | 522  | 899 | 852 | 755 | 516 | 874 | 562 | 1,005 | 783   | 795  |
| 14/15 WAPC EX | 249   | 270   | 249  | 197 | 217 | 224 | 199 | 164 | 227 | 186   | 243   | 244  |
| 15/16 WAPC    | 873   | 1,003 | 665  | 968 | 702 | 729 | 826 | 600 | 886 | 1,127 | 1,063 | 766  |
| 15/16 WAPC EX | 306   | 244   | 187  | 375 | 337 | 328 | 223 | 376 | 271 | 272   | 284   | 367  |
| 16/17 WAPC    | 858   | 853   |      |     |     |     |     |     |     |       |       |      |
| 16/17 WAPC EX | 167   | 257   |      |     |     |     |     |     |     |       |       |      |

Note: "Ex" represents Exempt



## Strata Lots (SL) created as a % of all lots created, by month

A total of 2,486 lots were created in August 2016, of which 44.65% (1,110) were strata lots, a 8.29% increase from the previous month (1,025,) and a 10.99% decrease compared to the same time previous year (1,247).



|                | July  | Aug   | Sept  | Oct   | Nov   | Dec   | Jan   | Feb   | Mar   | Apr   | May   | June  |
|----------------|-------|-------|-------|-------|-------|-------|-------|-------|-------|-------|-------|-------|
| 13/14 All Lots | 2,230 | 1,990 | 2,140 | 3,204 | 2,464 | 1,851 | 1,618 | 2,301 | 2,942 | 3,955 | 2,923 | 1,643 |
| 13/14 % SL     | 36.41 | 41.61 | 31.82 | 34.33 | 26.83 | 40.03 | 35.91 | 35.38 | 25.70 | 25.03 | 34.07 | 44.98 |
| 14/15 All Lots | 2,785 | 3,351 | 2,574 | 2,698 | 2,572 | 2,760 | 1,996 | 2,650 | 3,276 | 3,319 | 3,684 | 2,323 |
| 14/15 % SL     | 46.39 | 37.15 | 29.95 | 40.62 | 41.56 | 35.47 | 35.82 | 39.17 | 24.08 | 35.88 | 27.85 | 44.73 |
| 15/16 All Lots | 3,251 | 2,881 | 2,104 | 3,124 | 1,890 | 2,118 | 2,063 | 2,319 | 2,540 | 3,064 | 2,956 | 1,940 |
| 15/16 % SL     | 36.27 | 55.49 | 51.29 | 59.57 | 54.97 | 49.91 | 50.85 | 42.09 | 45.55 | 45.66 | 45.57 | 58.40 |
| 16/17 All Lots | 2,077 | 2,486 |       |       |       |       |       |       |       |       |       |       |
| 16/17 % SL     | 49.35 | 44.65 |       |       |       |       |       |       |       |       |       |       |

### Disclaimer

To the extent permitted by law, the Western Australian Land Information Authority trading as Landgate will in no way be liable to you or anyone else for any loss, damage or costs however caused (including through negligence) which may be directly or indirectly suffered arising from the use of or reliance on any information or data (including incomplete, out of date, wrong, inaccurate or misleading information or data) whether expressed or implied in the Report.

The information contained in this Report is provided by Landgate in good faith on an "as is" basis. The information is believed to be accurate and current at the date the Report was created. However changes in circumstances may affect the accuracy and completeness of the information. Landgate makes no representation or warranty as to the reliability, accuracy or completeness, merchantability or fitness for purpose of the information contained in this Report. You should not act on the basis of anything contained in this Report without first obtaining specific professional advice. It is not intended to provide the basis for any evaluation, decision or forecasting. You must make your own assessment of it and rely on it wholly at your own risk. Where there is any concern about accuracy and currency of the information in the Report, reference should be made to Landgate for verification.

To the extent permitted by law, all representations, warranties and other terms are excluded and where they cannot be excluded, any liability suffered arising out of use of the Report is limited to resupply.

### Copyright

You may download and print the Report only for your personal and non-commercial use or use within your organisation for internal purposes, unless you have prior written approval.

Other than for the purposes of and subject to the conditions prescribed under the Copyright Act, you may not, in any form or by any means without Landgate's prior written permission

- adapt, reproduce, store, distribute, transmit, print, display, perform, publish or create derivative works from any part of the Report; or
- commercialise any information, products or services obtained from any part of the Report.

Requests to use copyright material should be addressed to Landgate, PO Box 2222, Midland WA 6036. Telephone +61 (0)8 9273 7373 or email: [customerservice@landgate.wa.gov.au](mailto:customerservice@landgate.wa.gov.au).

Any authorised reproduction however altered, reformatted or redisplayed must acknowledge the source of the information and that Landgate is the owner of copyright.