

November Profile

During November 2004, the total number of documents lodged for the month (33,334) was more than November 2003 (30,995). The number of land transfer lodgements continued at a high level and the significant number of strata title lots created during the month was the highest for 12 months.

The average daily document lodgement for November (1,515) was similar to the previous month (1,531), but was 2 per cent less than November 2003 (1,550).

Transfer documents lodged (8,879) rose more than 10 per cent from last month (8,042) and was also nearly 10 percent higher than November 2003 (8,097). The total transfer consideration for the month was \$2.2 billion.

The number of mortgages lodged (9,582), which secured \$5.1 billion, increased by nearly 7 per cent from the previous month (8,968) and over 6 per cent from November 2003 (8,983).

Average daily searches (6,136) increased by over 2 per cent from last month (6,001) and 1 per cent from November 2003 (6,072).

The number of subdivisional lots created (1,979) fell by nearly 3 per cent from last month (2,034), but showed an increase of nearly 6 per cent from November 2003 (1,869). It was also the highest November figure since 1994 (1,994).

The number of strata title lots created (896) rose by a significant 56 per cent from last month (575) but showed a minimal 1 per cent decrease from November 2003 (908). It was the highest individual monthly figure since November 2003.

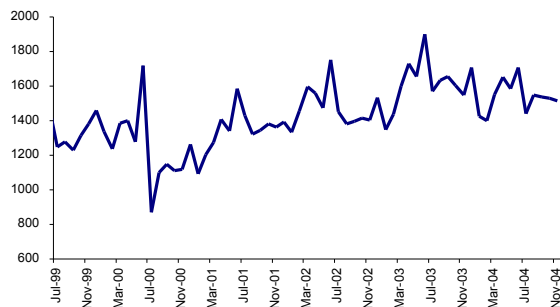
View DLI's Business Activity Profiles online every month at www.dli.wa.gov.au



Business Activity Profile

NOVEMBER '04

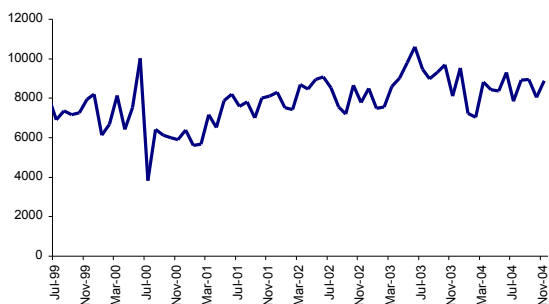
Department of Land Information



Average daily document lodgements:

These include Transfers, Mortgages, and Discharge of Mortgages

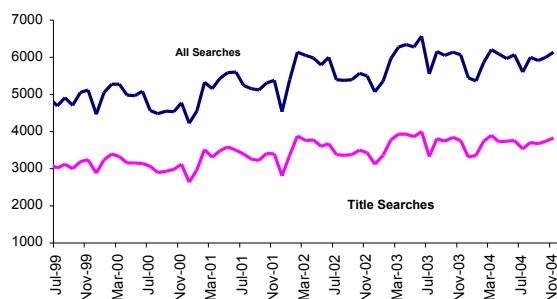
The average daily document lodgement for November (1,515) decreased by 1% from the previous month (1,531) and 2.2% from November 2003 (1,550).



Monthly transfer lodgements:

The number of transfer documents lodged for November (8,879) increased by 10.4% from previous month (8,042) and 9.6% from November 2003 (8,097). The majority of transfer documents lodged (2,293) were in the \$120,001 - \$200,000 consideration price range, followed by 2,235 in the range of \$200,001 - \$300,000. The total transfer consideration for the month was \$2.2 billion.

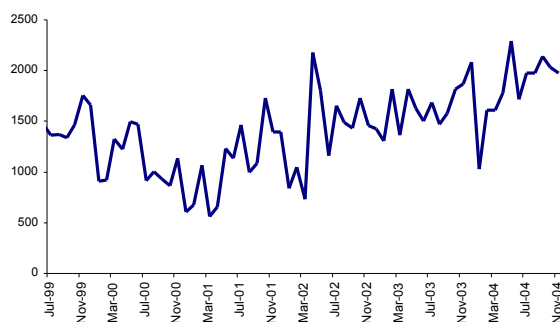
The number of mortgages lodged during November (9,582), which secured \$5.1 billion, showed an increase of 6.8% from the previous month (8,968) and 6.6% from November 2003 (8,983).



Average daily searches:

Average daily searches (all types) for November (6,136) increased by 2.2% from October (6,001) and 1% from November 2003 (6,072).

The average daily title search (3,836) increased by 2.5% from the previous month (3,742) and 2% from November 2003 (3,765).



Number of subdivision lots:

The title 'Freehold Survey Deposited Plans' has replaced the previous wording of 'plans and diagrams'.

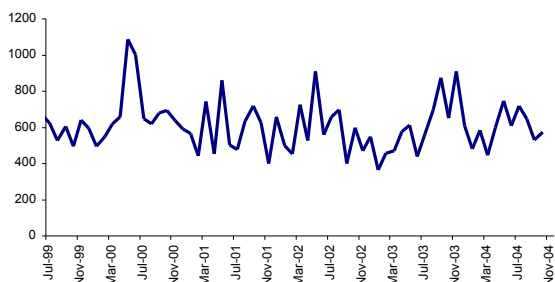
There were 254 Freehold Survey Deposited Plans lodged during November creating 1,979 subdivisional lots, a decrease of 2.7% from the previous month (2,034). However, it was an increase of 5.9% from November 2003 (1,869).



Business Activity Profile

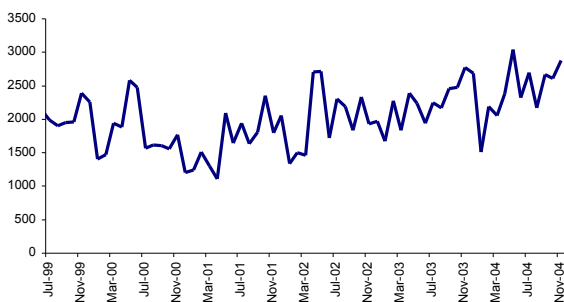
NOVEMBER '04

Department of Land Information



Number of strata title lots:

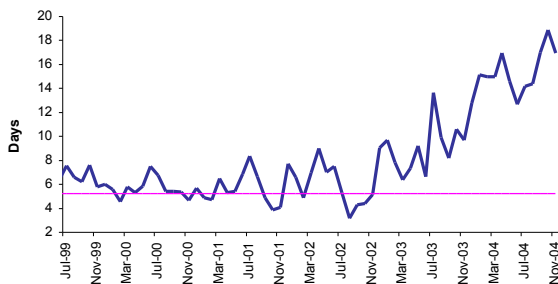
During November, 178 strata plans were lodged creating 896 strata lots, an increase of 55.8% from the previous month (575). However, this was a decrease of 1.3% from November 2003 (908).



Number of new lots:

lots created by Freehold Survey Deposited Plans or by Strata Plan. Includes existing lots that are extinguished but not subtracted.

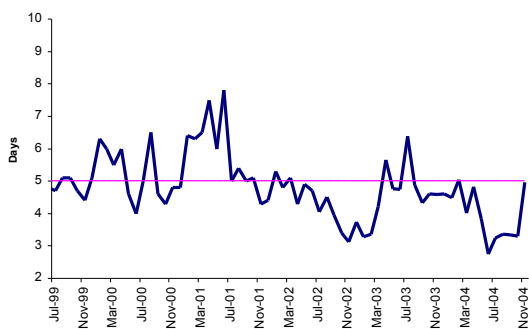
A total of 2,875 new lots were created during November, an increase of 10.2% from the previous month (2,609) and 3.5% from November 2003 (2,777).



Time to register a transaction against a certificate of title:

Target of 75% of Documents within 5.2 Days

During November, the number of days to register a transaction against a Certificate of Title (16.95 days) decreased from the previous month (18.9 days). Measures to improve the performance in this Performance Indicator are continuing.



Time to register a certificate of title for large subdivisions:

Target of 5 days

November recorded an average of 4.96 days to register a Certificate of Title over large subdivisions and met the Performance Indicator.

