

Issue 32 July 2001

# Landmarks

The magazine of the Department of Land Administration

## Historic Cossack set for revival

Farming from outer space

Regional cities get on the map



### Message from the Chief Executive

In May, the Premier, Dr Geoff Gallop, announced changes to the structure of the Western Australian public sector.

The initiatives being introduced present some exciting opportunities for the Department of Land Administration and we are currently working to maximise them.

At this stage, DOLA will continue with our existing name and report to the Minister for Planning and Infrastructure, Alannah MacTiernan.

Our business is expanding with the decision to integrate the Valuer General's Office within the DOLA framework and I am very pleased to extend a warm welcome to more than 200 staff members joining DOLA.

In another move, the responsibility for development of regional land for community and growth purposes is being transferred from DOLA to LandCorp.

This change allows our department to continue our focus on land information and the administration of Crown land.

Throughout DOLA, considerable work is under way to ensure the changes occur smoothly and that we continue to deliver uninterrupted, quality service to our customers.

It is particularly pleasing that the Government changes recognise the continuing importance of a first-class land administration service and the value of a secure titles system.

They also provide exciting opportunities for us to build on our e-commerce expertise and systems.

DOLA has some excellent opportunities ahead to develop the services we offer our customers. We will continue to keep you informed of progress.

**GRAHAME SEARLE  
ACTING CHIEF EXECUTIVE**

## Contents

- DOLA launches StreetSmart city and town series  
Bunbury and Albany maps hit the stands .....3
- COVER STORY—Cossack to shine once again  
Plans to revive historic north-west town.....5
- Keeping tabs on WA  
X-band satellite tracker improves view from space ....7
- Farming by satellite  
New website shows pasture growth rate.....8
- Business Activity Profile  
Final quarter of 2000-2001 .....11/12
- SkyView WA goes live  
Record number of website hits .....15

## News in brief

### Top marks for energy efficiency

The Department of Land Administration has been commended for its commitment to reduced energy consumption.

DOLA was named a finalist in the "Commercial Buildings" category of the 2001 WA Energy Efficiency Awards for its "Reuse, Reduce and Recycle" campaign, which supports the Department's mission to reduce energy consumption, energy costs and emission of greenhouse gases.

Facilities and Support Services Manager John Radalj said DOLA's annual energy consumption had dropped from 7.34GWh in 1997-1998 to an estimated 6.05GWh in 2000-2001.

This reduction had saved DOLA about \$330,000 over the past three financial years - an average of 13.7 percent per year.

Mr Radalj said DOLA was in the process of establishing an Energy Performance Contracting pilot program to ensure the Department continued to benefit from energy savings.

This will be the first time a WA agency has embarked upon a contract of this kind.

### Landmarks is available in alternative formats.

Landmarks is published quarterly by the Department of Land Administration (DOLA), Western Australia, Midland Square, Midland, Western Australia. PO Box 2222 Midland, 6936. Telephone (08) 9273 7373.

[www.dola.wa.gov.au](http://www.dola.wa.gov.au)

Editorial enquiries: (08) 9273 7561

Subscription and advertising enquiries: 9273 7566

Email: [Landmarks@dola.wa.gov.au](mailto:Landmarks@dola.wa.gov.au)



# New regional city maps hit the stands

The Department of Land Administration has launched its StreetSmart City and Town Series with two new regional centre maps.

The 1:20,000 maps cover Bunbury and Albany and their environs and are prepared to Street Directory specifications.

Geographic Information Manager Ron Vincent said both maps were informative and colourful.

The Albany version included an enlarged map of the town centre while the Bunbury publication covered the satellite settlements of Eaton and Australind.

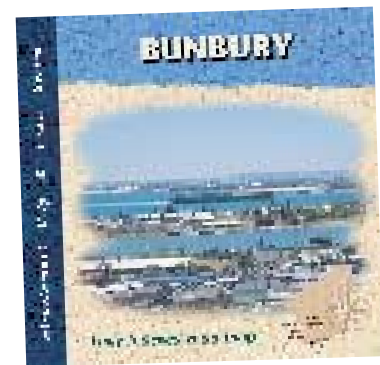
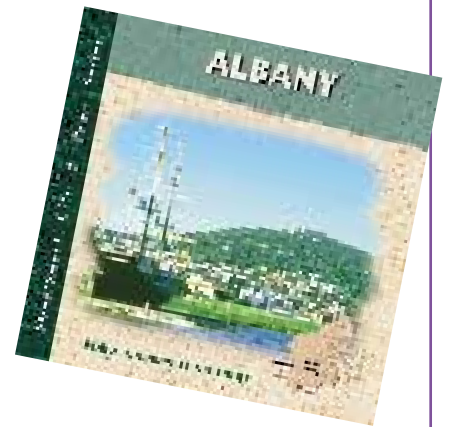
"Both feature a 500m by 500m grid and are indexed with street names for simple navigation," Mr Vincent said.

"These maps also include a massive amount of other useful information,

such as the location of road and railways, locality and local government boundaries, water features, cycle and walkways, schools, post offices, picnic grounds and public telephones.

"You can even use them to find out which petrol stations in the area carry auto gas as well as petrol."

Mr Vincent said a further two StreetSmart maps covering Kalgoorlie-Boulder and Geraldton were due to be released this month.



DOLA's new StreetSmart city and town maps are colourful and contain lots of useful information for simple navigation

## New GEONOMA simplifies geographical searches

Geographical searches have been simplified with the launch of the Department of Land Administration's revamped GEONOMA system.

This computer system provides the storage, maintenance and reporting functions for all official names and geographic features (including roads) in WA, which make up one of DOLA's 12 fundamental datasets.

As part of the SmartPlan project, it has been revamped to allow staff and authorised Government users to view, enquire and report on the positions or extents of geographic features.

Project Manager Jeff Stone said the name GEONOMA was derived from the words "geographical"

and "noma" (meaning "name" in Latin).

He said the revamped system had improved access to road name and street address information.

"It has an user-friendly interface, broader searching facilities and a wider range of reporting formats," Mr Stone said.

"It can automatically check for similar sounding names in other localities.

"In addition, the data is more accurate as the conversion process necessitated the resolution of many anomalies in the old database."

Earlier this year, DOLA also launched an Intranet Viewer enabling staff to search for cadastral

information by street address, Polygon Identification Number or Polygon Identifier, map sheet, coordinates or administrative boundaries.

Access to the Intranet Viewer is currently only available to DOLA staff, however it will be used as a model for an Internet Viewer for external clients.

Mr Stone said SmartPlan would eventually be linked with DOLA's new electronic titles system, Smart-Register.

"Eventually clients will be able to search for cadastral information in SmartPlan then request ownership and other title information," he said.

# Historic Cossack to shine once again



The history of the Jarman Island lighthouse is inextricably interwoven with that of the port of Cossack. The lighthouse was one of a string of navigational beacons on the WA coast, established for the safety of coastal shipping. The prefabricated cast iron tower was erected in adverse conditions, with unskilled labour and limited resources.

**W**estern Australia's historic north-west town of Cossack has been earmarked for revival.

The Department of Land Administration has joined forces with the Heritage Council of WA, National Trust of Australia, Pilbara Development Commission, WA Tourism Commission, LandCorp and the Shire of Roebourne to breathe new life into the settlement.

A steering committee has been formed and a study commissioned to consider ways of reinvigorating the old town.

Recommendations will be made to Cabinet by the end of the year outlining long-term plans to bring Cossack back to life for permanent residents, tourists and a modest level of private sector commercial activity.

DOLA's Pilbara Regional Manager, Henty Farrar, said Cossack was established in 1863.

Once a flourishing port, it had lain idle for almost the last 100 years.

"Cossack was the first port to be established in the north-west of the State," he said.

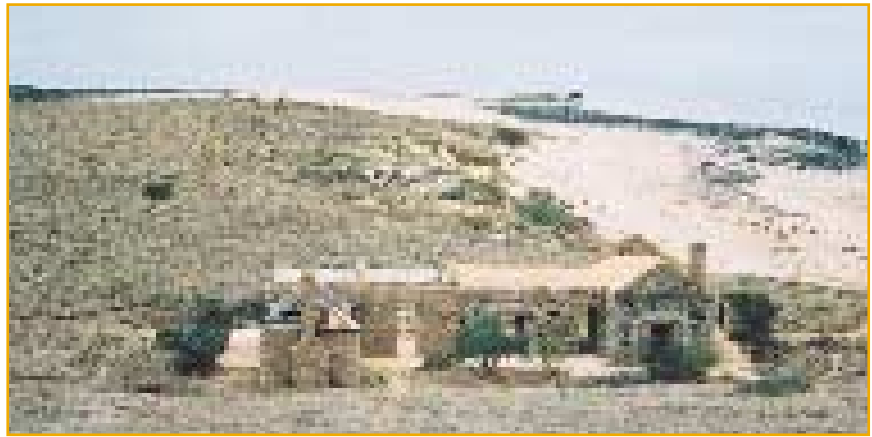
"From 1863 to about the end of the century, it was the point of access for the settlement and development of the Pilbara region's pastoral and mining industries.

"It was also the birthplace of the local pearling industry.

"According to historical records, the town's first commercial pearler collected nine tons of pearl shell in 1866. By the end of the decade, 10 boats were searching for pearls in the area and this jumped to 80 in the early 1870s."

Mr Farrar said research had also shown Cossack was also the first multicultural settlement in the region.

In addition to Aborigines, Malays, Indonesians, Chinese, Filipinos and Japanese came to Cossack as contract labourers in the pearling industry or as merchants and pearl-ers in their own right.



**A pearly of a town... the old ruins of Cossack (top and inset), the birthplace of the local pearl industry. Part of the town has been restored (bottom photo), with options for reinvigorating the historic town due to go to Cabinet by the end of the year.**

Photos courtesy of The Planning Group.



Mr Farrar said Cossack went into decline in the early 20<sup>th</sup> Century.

In 1881, its population comprised 229 Europeans, 15 people from Singapore, 16 Chinese and 351 Aborigines.

With the shift of the pearling industry to Broome, the official population quickly dropped and in 1901 only 166 people called the town home.

In 1910, the municipality was dissolved by the Governor and in 1953 most of the lots reverted to the Crown.

Mr Farrar said the majority of land within the historic townsite was Crown land managed by the Shire of Roebourne.

Along with the adjoining Jarman Island, it was registered under the Heritage of Western Australia Act 1990, entered in the Federal register of the National Estate and classified by the National Trust.

"With its plentiful land, scenic beauty, eco-tourism features and marine attractions, Cossack is perfectly positioned for a revival in the 21<sup>st</sup> Century," Mr Farrar said.

"Key elements of the townsite and Jarman Island have been preserved, which would give both locals and visitors a unique insight into authentic early Australian history."

# Honours for former DOLA Chief Executive

**F**ormer Department of Land Administration Chief Executive Allan Skinner was recently awarded the Public Service Medal for outstanding service.

Mr Skinner's career with the WA public service began in 1964 when he was appointed to the Metropolitan Water Supply Board. He joined the then Department of Lands and Surveys in 1969 as a clerk in the roads and reserves branch.

In 1986 he was promoted to Corporate Services Director in the newly formed Department of Land Administration and, in 1989, named Director, Land Operations.

Mr Skinner took up the position as Chief Executive in 1991.

Acting Chief Executive Grahame Searle said over the past 10 years Allan had created a dynamic public sector agency which had been consistently recognised for innovation and quality customer service.

"Allan demonstrated an untiring commitment towards raising the standards of public administration in WA and made a huge contribution to the improvement of land administration not just in the State, but also nationally," Mr Searle said.

"Under his leadership, DOLA achieved considerable successes, many of which were formally recognised by numerous awards at the highest levels.

"Allan epitomises the best attributes of today's public service,



**Former DOLA Chief Executive Allan Skinner**

leading by example. He is deeply committed to ethical conduct, fairness, inclusiveness and diversity."

Mr Skinner left DOLA in June 2001 to lead the creation of the proposed new Department of Local Government and Regional Development.

# From theodolite to satellite

**T**he State's top surveyor has called it a day.

After 37 years in the business – the last 10 as Surveyor-General - Department of Land Administration Land Information Services Director Henry Houghton has retired.

Mr Houghton clearly remembers the launch of his career in 1964, when he became a cadet surveyor with the then Department of Lands and Surveys.

"I was given a vehicle, some tents, 100 gallons of water and a couple of hands and told to go forth and survey!" he recalled.

That was the beginning of a full and illustrious career spanning 37 years.

Mr Houghton qualified for his surveyor's licence in 1968 but was soon trading in his theodolite to

work in the exciting field of satellites.

Satellites have revolutionised surveying and asset management in the past two decades and Mr Houghton has been at the forefront of their introduction since the mid-1970s.

He led the establishment of DOLA's \$5.1 million satellite reception facilities at the CSIRO site in Floreat Park.

This facility provides essential information including updates for the fishing industry, bushfire monitoring for the whole north of Australia and pastoral drought monitoring.

In 1990, Mr Houghton became Director of Mapping and Survey and from 1997 to 1998 was acting Executive Director.



**Retiring Land Information Services Director Henry Houghton**

He also worked overseas with DOLA in countries including Vietnam, Bangladesh, Sri Lanka and Thailand.

He took up the position of Land Information Services Director in 1998.

# New satellite tracker puts WA on the world map

**A**dvances in long range weather forecasting, the management of fire risks in remote areas and improved monitoring of WA's Leeuwin current are just a few of the benefits of a new million-dollar, X-band satellite tracker to be installed at Murdoch in September.

Known as the TeraScan SX-EOS, the tracker is a satellite information receiving station built by the United States' SeaSpace Corporation.

Contained within a large 3.6 metre by 4.2 metre dome, it is one of only three such systems to be installed in Australia - the others are in Hobart and Alice Springs.

The tracker has been funded by the WA Satellite Technology and Applications Consortium, whose members include the Department of Land Administration, Murdoch and Curtin universities, the CSIRO, Bureau of Meteorology and the Federal Mapping Agency.

It will be mounted on the roof of the Murdoch Environmental Science building, giving a clear 'line of sight' from horizon to horizon.

WASTAC Chairman Dr Richard Smith, who also manages DOLA's Satellite Remote Sensing Services, said the consortium's efforts over the past decade had produced many positive results.

"These include improved long range weather forecasts as well as new information on the movements of the Leeuwin current in the Indian Ocean to assist fishermen," Dr Smith said.

"Farmers have also had access to improved crop and pasture yield forecasts along with frost and drought monitoring to support claims for exceptional circumstances.

"In remote areas, monitoring of vegetation conditions and bush fires will occur 24 hours a day, seven days a week, to assist pastoralists and Aboriginal communities in managing fire risks.

"Such successful collaboration amongst State and Commonwealth agencies is unique in Australia and probably the world."

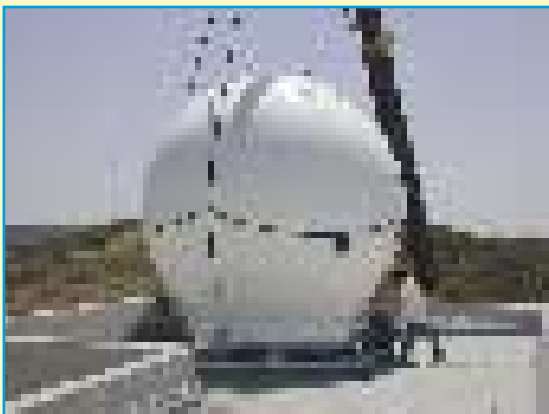
Murdoch Professor of Environmental Science Tom Lyons said the new satellite receiver would significantly improve vision from space.

"It will monitor new ocean, atmospheric and land changes and receive information from all over WA and the Southern and Indian Oceans," Professor Lyons said.

"Among other things, it will significantly increase the accuracy of weather forecasting for WA's many land and ocean-based activities and give us better information about global environmental changes affecting our climate, including forests, coral reefs, agriculture and the environment."

Professor Lyons said the tracker would receive data at 10 to 100 mega bits per second - equivalent to the transmission rate of the next generation of global environmental satellites.

For more technical details and photos of the satellite tracker, visit <http://cimss.ssec.wisc.edu/~gumley/tower/xband.html>



The new X-band satellite tracker to be installed at Murdoch later this year will improve long range weather forecasting and fire risk management

# Farm maps help with planning

**D**igital aerial photography from the Department of Land Administration's new SkyView WA site is being used to help hobby farmers with property planning.

DOLA has produced a series of property maps using this imagery which show cadastral boundaries and other useful information.

These maps are being distributed at Department of Agriculture seminars.

Business Development Officer Wes Sutton said the backdrop for the maps was rectified aerial photography taken from SkyView.

This was then overlaid with information extracted from DOLA's Spatial Cadastral Database using GIS Analysis software.

Included on the final prints were a scale bar and grid, north point, geographical coordinates and, on request, a location diagram.

"Until now if someone wanted imagery like this we could only give them an unrectified aerial photograph," Mr Sutton said.

"With access to digital information, we are now exploring ways of using our technology to produce more informative digital maps.

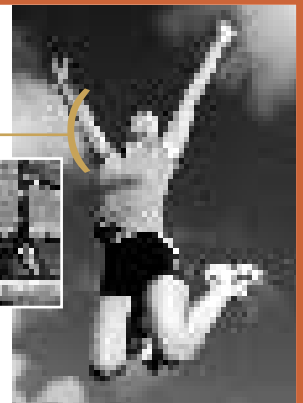
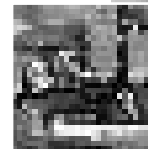
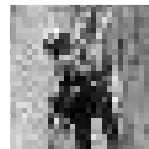
"Provided the imagery is available, we could do this for any property in the State."

For more information about customised map products telephone 9273 7555.

DOLA overlays SkyView WA imagery with information from its Spatial Cadastral Database to create useful planning maps for farmers



## Activate your super



Enjoy greater flexibility and control over your super investment from 1 July 2001

Superannuation managed by the Government Employees Superannuation Board (GESB) is changing. From 1 July 2001, the GESB can offer investment choice to all public sector employees in the West State Super scheme.

Members of West State Super will now enjoy more control and flexibility over their super investment, with the potential to earn higher long-term returns than the Board has been able to offer in the past. Importantly, administration fees will not increase with the introduction of investment choice.

We will be sending all West State Super members a comprehensive information kit, which outlines a choice of four readymade plans, plus a fifth option for those who wish to personally select their own mix of assets.

Members are able to switch between investment plans at any time, at no cost, and as often as they desire.

Members of other schemes managed by the GESB may also be eligible to access investment choice on their superannuation and are encouraged to contact the GESB for further information.

For more details about the new investment options contact a Member Services Officer on 13 43 72 or email [memberservices@gesb.wa.gov.au](mailto:memberservices@gesb.wa.gov.au)



[www.gesb.wa.gov.au](http://www.gesb.wa.gov.au)



# Farming by satellite

**F**armers can now get vital information about the condition of their pastures without stepping outside their front door.

With just a computer and Internet connection, they can find out the average growth rate of pasture in their shire by logging onto a new website launched recently by CSIRO Livestock Industries.

The site uses satellite imagery from the Department of Land Administration to determine the amount of greenness in an area.

Using new technology, this imagery is calibrated to measure the amount of feed available in pastures and the rate at which it grows. This process takes place in collaboration with Agriculture WA.

DOLA's Satellite Remote Sensing Services Manager, Dr Richard Smith, said the raw data for pasture growth rate was taken from the NOAA-AVHRR satellite, which passed over WA every day. The raw data for the feed-on-offer came from the Landsat satellite, which crossed the State every 16 days.

Both satellites orbit at about 800km and travel at 36,000km/hr.

"The satellites take about 15 minutes to traverse north-south from horizon to horizon," Dr Smith explained.

"NOAA-AVHRR scans a swath about 2,800km wide and is tracked by the WA Satellite and Technology and Applications Consortium's antenna at Curtin University. Landsat scans a swath 180km wide and is tracked from Alice Springs by the Australian Centre for Remote Sensing."

CSIRO Project Leader Dr David Henry said this was the first time the results of this new technology on pasture growth rate had been

made available to farmers over the Internet.

Where possible, the information would be updated weekly.

"This will be a test year for us, to see how the technology performs and to make improvements where necessary," Dr Henry said.

**"This is the first time the results of this new technology on pasture growth rate have been made available to farmers over the Internet."**

"We will also be assessing the use of the information by farmers."

Dr Henry said the website was the first in a suite of satellite-based pasture management tools, which in future years was expected to deliver feed-on-offer and pasture growth rate at the paddock level.

The information available helped farmers make decisions about grazing rotations, feed budgeting, fertiliser application and other 'precision agriculture' techniques.

He said farmers in Western Australia were taking part in pilot studies designed to test both the delivery of information to farmers and how successfully it could be used to improve their management decisions and financial viability.

Early studies indicated some had increased their pasture utilisation

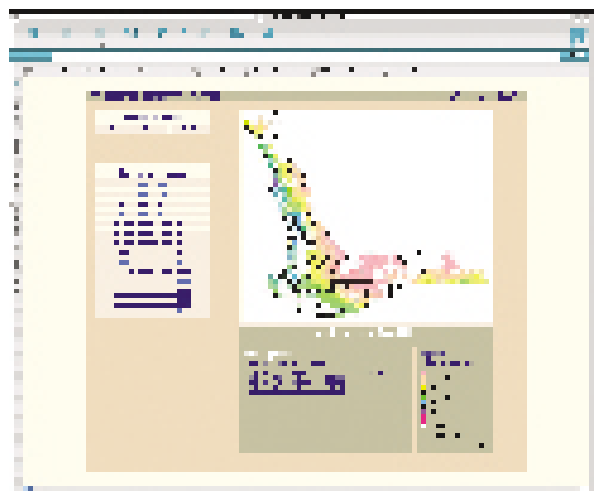
and overall fleece value by more than \$8 per head.

By strip grazing their young sheep and increasing the stocking rate three-fold, they had also increased their return per hectare.

"Other groups who will benefit from the technology include regional shires, government, agribusiness, banking and finance," Dr Henry said.

"The technology can assist them in rural strategic planning, land valuation and assessment, and insurance."

The new website can be accessed at [www.pgr.csiro.au](http://www.pgr.csiro.au) or via [www.agric.wa.gov.au](http://www.agric.wa.gov.au) from August 2001.



# Renovations to provide day centre for seniors

**T**he Department of Land Administration is spearheading a project to refurbish part of Roebourne's historic gaol.

It has secured Federal funding through the Department of Commerce and Trade to renovate the old warders' quarters to provide a day centre for local seniors, predominantly from the Aboriginal community.

Once completed, the day care centre will be managed by Pilbara Home Care Incorporated.

DOLA's Pilbara Regional Manager Henty Farrar said the old gaol was a Crown building listed on the State's Heritage Register.

He said the Department had already allocated \$17,000 for basic repairs to the building.

A further \$40,740 had been provided by the Federal Government.

"This project is particularly noteworthy as it is the first time Government agencies have been allowed to apply for Federal grants," Mr Farrar said.

Pilbara Home Care currently operates from an old house in Roebourne, but Regional Manager Mary Butterworth said plans to move to the new premises had been wholeheartedly supported by clients and their families.

Many of them demonstrated their enthusiasm by participating in a weekend busy bee in June.

Ms Butterworth said the new facility would be staffed by three local Aboriginal employees.

"Our aim is to provide a service which supports and encourages older people, people with disabilities, terminal or mental illness and carers to live independently and enjoy quality of life in the community," she said.

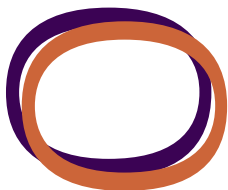


The warders' quarters at the old Roebourne Gaol are being refurbished to provide a day centre for local seniors



# Business Activity

*DOLA's complete Business Activity Profile is available at [www.dola.wa.gov.au](http://www.dola.wa.gov.au)*



## June 2001 and the 2000/2001 Financial Year

During the 2000/2001 Financial Year, business activity was lower than the record levels experienced last year, that were influenced by the pending GST. Document lodgement numbers were down, except for the last two months which, with the exception of last year, recorded the highest levels for May and June in seven years.

### June 2001

During the last week of the financial year, more than 9,900 documents were lodged, averaging 1,983 per day.

The average daily document lodgement for June was 1,586 documents per day – more than 18 percent higher than May (1,341).

There was a decrease of nearly 10 percent in the number of subdivisional lots created in June (1,139), compared to the previous month (1,233).

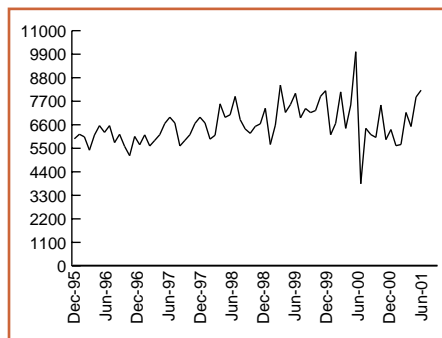
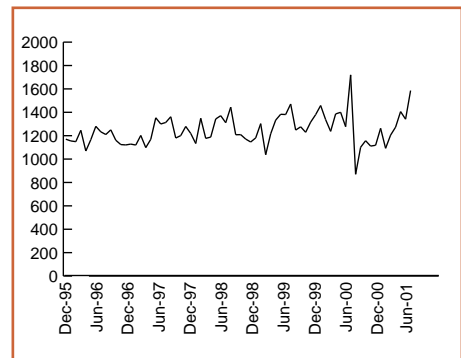
The number of strata lots created (504) also reduced by more than 41 percent from May (861).

### The Financial Year in Review

- A total of 75,807 land transfers were lodged – 15 percent lower than the previous financial year (89,754).
- Average daily searches totalled 58,766 – similar to last financial year (59,592).
- A total of 18,225 lots were created – 25 percent lower than last financial year (24,201).
- 86,403 mortgages were registered - 12 percent down on last financial year (98,444).

## Average daily document lodgements (Including Transfers, Mortgages, and Discharge of Mortgages)

The average daily document lodgement for June 2001 was 1,586 documents per day. This represented an increase of 18.3 percent from May (1,341), and a decrease of 7.8 percent from June 2000 (1,720).



## Monthly transfer lodgements

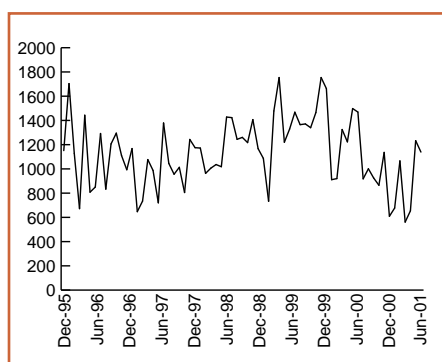
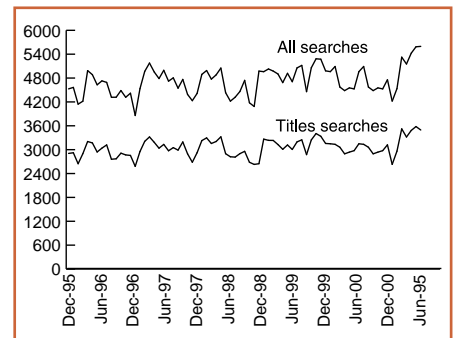
The number of transfers lodged for June 2001 totalled 8,215 which was a 4 percent increase from the previous month (7,897), and a decrease of 18 percent from the record June 2000 figure of 10,016. The slight majority of transfer documents lodged (2,430) were in the \$120,001 - \$200,000 consideration price range, followed by 2,426 in the \$0 - \$85,000 range. The total transfer consideration for the month was \$1.5 billion.

The number of mortgages lodged for June totalled 9,390 and amounted to \$3.2 billion.

## Average daily searches (Finding and obtaining a copy of a statutory document)

Average daily searches (all types) for June 2001 (5,596) was similar to the previous month (5,586) and represented a 9.9 percent increase from June 2000 (5,091).

Average daily title searches (3,494) decreased by 2.4 percent from May (3,581) but showed an 11.5 percent increase from June 2000 (3,134).



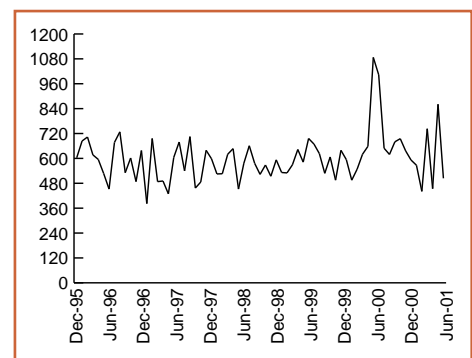
## Number of subdivision lots

There were 166 Freehold Survey Deposited Plans lodged during June 2001 creating 1,139 subdivisional lots. This was a decrease of 7.6 percent from May (1,233) and 22.5 percent from the June 2000 figure of 1,469.

The title 'Freehold Survey Deposited Plans' has replaced the previous wording of 'plans and diagrams'.

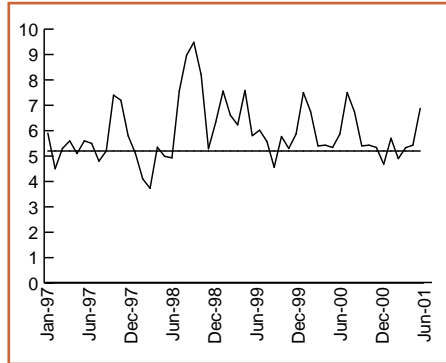
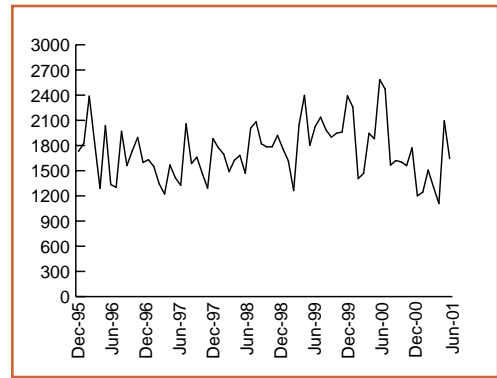
## Number of strata title lots

During June, 159 strata plans were lodged, creating 504 strata lots, a decrease of 41.5% from the previous month (861) and 49.8 % from June 2000 (1,003).



**Number of new lots (New lots created by Freehold Survey Deposited Plans or by Strata Plan. Includes existing lots that are extinguished but not subtracted)**

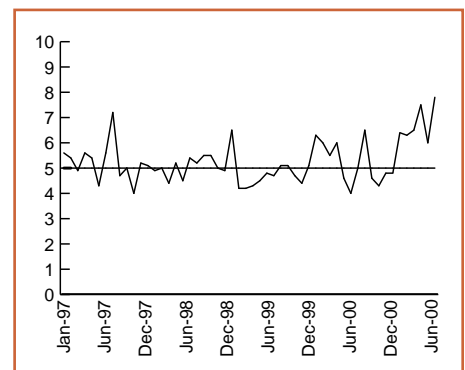
A total of 1,643 new lots were created during June, which represented a 21.5 percent decrease from the previous month (2,094) and 33.5 percent from June 2000 (2,472).



**Time to register a transaction against a certificate of title (Target - 75 per cent of documents within 5.2 days)**

Target of 75% of Documents within 5.2 Days

During June 2001, the number of days to register a transaction against a Certificate of Title averaged 6.9 days. The yearly average performance indicator was 5.6 days.



**Time to register a certificate of title for large subdivisions (Target - 5 days)**

The time to register a Certificate of Title over large subdivisions for the month averaged 7.8 days. The yearly average performance indicator was 5.8 days.

# Satellite support rainfall research

**S**atellite images and rabbit fences generally don't go hand-in-hand, but try telling that to the team at the Department of Land Administration's Satellite Remote Sensing Services.

SRSS provides satellite image support to a study group examining how vegetation affects rainfall near WA's rabbit-proof fence. The fence spans 1190kms from Kalbarri to Hoptoun.

The climate research project may offer fresh hope to farmers whose land is stricken by decreasing rainfall. Initiated by SRSS Manager Dr Richard Smith, it is now being conducted by Climatologist Professor Tom Lyons and his Murdoch University team. DOLA has been involved in developing satellite imaging for many years.

"WA's rabbit-proof fence is central to the research project," Dr Smith said.

"It divides land of distinct uses and this has allowed the comparisons of rainfall between naturally vegetated and cleared agricultural land."

Dr Smith said he noticed the relationship between vegetation and rainfall while 10 years ago while developing DOLA's Vegetation Watch.

"I quickly recognised from DOLA satellite imagery that meteorologically, the rabbit fence represented a unique contrast between land covered with perennial native vegetation and the winter-growing annual species of the agricultural area," he said.

"I also discovered this contrast correlated with trends in rainfall over the previous 50 years."

Dr Smith noticed that as the land surface became brighter with the replacement of native vegetation

with winter growing annuals, the rainfall appeared to decline.

He passed on his observations to Professor Lyons who went on to instigate a research project, now known as the Climate Modelling Land Atmosphere Interaction in a Semi-Arid Region.

"Professor Lyons and his team are now in the process of investigating whether there is a credible scientific explanation for the suggestion that the 30 per cent decline in annual rainfall is caused by the extensive clearing and the introduction of winter-growing annual species," Dr Smith said.

Other agencies involved in the research project include Airborne Research Australia, Flinders University, CSIRO and Agriculture WA.

# DOLA hosts inaugural WASNAC meeting

**T**he Department of Land Administration hosted the inaugural meeting of the new WA Satellite Navigation Advisory Committee on June 25.

The meeting was attended by 16 committee members drawn from the public and private sectors, as well as academia.

It was addressed by Australian Global Navigation Satellite Systems Coordination Committee (AGCC) Secretary Tony Griffiths, who outlined the history, role and activities of the AGCC.

WASNAC is a State-based reference group formed to provide advice to the AGCC.

With representation from the public and private sectors and academia,

it will provide a local forum for global navigation satellite system issues.

It will also provide advice to the State Government on draft policy, priorities and relevant issues.

One of WASNAC's first tasks is to comment on the recently-released draft document 'Australian Strategic Policy for Implementation of GNSS'.

The review of this document will focus on regional needs and the respective roles of government and industry.

The AGCC was established by the Minister for Transport and Regional Services in May 2000 to:

- Consider and develop mechanisms to coordinate all land, sea and air aspects of GNSS;
- Promote the safe and effective use and development of Global Navigation Support Systems in Australia; and
- Coordinate national security issues, the application of augmentation systems and the national use of GNSS in other relevant applications.

For more information about WASNAC, contact Basil Rompotis at [basil\\_rompotis@dola.wa.gov.au](mailto:basil_rompotis@dola.wa.gov.au).

Further details about the AGCC can be found at [www.dotrs.gov.au/agcc](http://www.dotrs.gov.au/agcc)

## Karratha land released for housing development

**T**he Department of Land Administration has completed the first phase of a major housing land project in Karratha.

Earlier this year, the Department signed a lease for the first stage of a release of land for more than 400 lots, covering in excess of 55 hectares.

Pilbara Regional Manager Henty Farrar said the housing land project would accommodate many of the anticipated 2000 employees associated with the upcoming resource development projects on the Burrup.

He said DOLA worked closely with the local native title parties and the joint venture group for two years to enable the first phase of the land release. The second and final phase is also close to being resolved following the completion of the

latest Aboriginal heritage study commissioned by DOLA.

"This is a first for DOLA in that the lease explores fields as diverse as development and market demand, multi-unit site pricing and complex GST issues," Mr Farrar said.

"The timing of the development lease in support of Burrup's expansion is consistent with the anticipated demand for residential land in Karratha."

The land earmarked for the housing project is located in four parcels to the west of the town centre. It will be developed in stages over the next three years by joint venture

group Clough Property and Rapley Wilkinson, which successfully tendered for the project in 1998.



# SkyView launch generates record hits

**W**idespread interest in the launch of SkyView WA – the Department of Land Administration’s latest Internet product – generated a record number of visitors to the website.

More than 7,000 people tried the site on the day of the launch, compared to an average of just over 1000 per day for the preceding week.

SkyView uses revolutionary compression software developed by Perth-based Earth Resource Mapping to make imagery previously too large for viewing over the Internet to be downloaded from DOLA’s ecommerce site.

It features the largest aerial photograph of the Perth metropolitan area ever produced, covering Perth suburbs from Two Rocks to Mandurah. This image is a record 12.4 gigabytes compressed – making it one of the largest aerial images in the world to be displayed on the Internet.

Also featured is an almost equally large outer metropolitan view covering the Avon Valley south to Bodington and selected imagery of the South West.

Addressing more than 100 guests at Caversham’s Sandalford Estate, Planning and Infrastructure Minister Alannah MacTiernan said accessibility to land information, such as aerial photography, empowered the community to take a more active and informed role in the planning process.

“SkyView is a revolutionary online planning and land information tool,” she said.

“It opens a window of opportunity for community groups, local land-care groups, farmers, local councils,

property developers and planners who can now access this information over the Internet.”

“They will be able to use it as a tool for decision-making, development proposals, heritage and environmental purposes.”

Since its launch, SkyView has been expanded to include imagery of Bunbury, Collie, Busselton, Goomalling, Gingin Dumbleyung, Newdegate, south Pemberton, Rottnest, Carnarvon and Broome.

Some of this is available in high-resolution colour (approximately .5m ground pixels) or low resolution (generally 1.2m ground pixels) greyscale.

The site also includes some satellite imagery.

DOLA’s new SkyView site is at [www.landonline.com.au](http://www.landonline.com.au)

Visitors can search by suburb, zoom in on their street or neighbourhood and purchase photos for immediate download.



**Above: Midland Police Sergeant Errol Bristow and Senior Constable Terry Egan explore DOLA’s new SkyView WA site.**

**Below: Sandalford Caversham Estate owner Peter Pickering and Planning and Infrastructure Minister Alannah MacTiernan at the SkyView launch.**



The ultimate  
in aerial  
photography

SkyView WA

## Get a bird's eye view of your house and suburb

SkyviewWA provides FREE online access to view seamless colour and greyscale ortho-mosaics covering large areas of Western Australia's south west. Through your Internet Browser you can easily pan and zoom over the mosaics to select and view your area of interest.

Purchase your selection through DOLA's secure online credit card facility, then:

- download a JPEG file online, or
- order a ECW file online and DOLA will deliver your image on CD.

Try and buy online at  
[www.landonline.com.au](http://www.landonline.com.au)

What some of our customers say...

" Our use of DOLA's digital aerial imagery combined with raster map overlays and our own photography enables geospatial linking between advertised properties and poerful presentation to clients. "

John Haselby, Ezyimage Limited

" The ability for us to connect orthoimages with a database has allowed much clearer presentations to be developed for meetings with the public and community groups. It is an invaluable customer service tool. "

Roy Bailey, City of Melville

[www.landonline.com.au](http://www.landonline.com.au)



A PanAIRama product