

Contents:

Hancock name becomes part of the Pilbara

DOLA maps discounted for Seniors

DOLA marks the International Year of Older Persons

New Land Administration Act opens the way

Development planned for Kalgoorlie

Management first for DOLA

DOLA Year 2000 Status - as at August 1999

DOLA set for hi-tech delivery

Hancock name becomes part of the Pilbara

Part of the Pilbara's Hamersley Ranges has been named after the historic Hancock family, which pioneered the development of Western Australia's North West.



The picturesque Hamersley Ranges.

The Hancock Range, east of the Karijini National Park, is particularly rich in iron ore deposits with broad valleys and high peaks rising to almost 1200 metres.

Today, the Hancock name is primarily known because of Lang Hancock's contribution to the iron ore industry in the Pilbara.

The Minister for Lands, Doug Shave, said that the naming of the range recognised the contribution of the Hancock family to the development of the Pilbara.

The Hancock connection with the Pilbara can be traced back to 1864, when John Frederick Hancock

and his sister Emma Mary Withnell settled in the area.

"They were real pioneers of the pastoral industry and set an example to be followed by John's son George and his grandson Langley", said Mr Shave.

"This visionary man persevered against considerable odds. He was part of the heart and soul of this land.

"Much of today's development in the Pilbara owes its existence to the persistent endeavours of Lang Hancock."

"The Hancock Range would be an enduring memorial to the pioneering spirit of the Hancock family", said Mr Shave.

The naming was recommended by the State Government's Geographic Names Committee following widespread community consultation.

Contents

DOLA maps discounted for Seniors

As part of its contribution to the International Year of Older Persons, the Department of Land Administration is offering senior citizens a discount of 25 per cent on some of its StreetSmart maps and CD-ROM products.

The Manager of DOLA's Central Map Agency, Kerry Smyth, says the discount will apply until the end of the year.

"Senior citizens are very frequent travellers and make up a significant portion of our customer base", said Kerry.

"The discount will apply to a whole range of our quality paper-based touring maps, including the recently launched StreetSmart Kimberley Touring Map.

"It is the most comprehensive touring map of one of the world's last great wilderness areas. The map shows people how to make the most of their holiday in the Kimberley."

DOLA has touring maps covering most of Western Australia's regional areas. In addition to town maps of regional centres, the touring maps also contain photographs and notes for outback travel.

With the discount, the standard maps will cost \$5.23 and the CD-ROM, which contains all of the touring maps, will cost \$23.15.

Senior citizens can use their Senior's Cards to buy the discounted products at the Central Map Agency in Midland. (the StreetSmart Perth Street Directory is excluded from the offer.)

DOLA postal address:

PO Box 2222

Midland WA 6936

Telephone: (08) 9273 7075

Fax: (08) 9273 7205

e-mail: sales@dola.wa.gov.au

Contents

DOLA marks the International Year of Older Persons

DOLA has helped mark the International Year of Older Persons by presenting 98 year-old Stella Anderson with a Certificate of Title for her family home, where she lived as a child.

DOLA searched its records to find the Certificate, which dates back to 1906, and presented it to Stella on her 98th birthday.

Though the house and the street have long since gone, the presentation was held at the Shire of Swan administration centre, which sits on the same block of land as the old family home.



Stella gets her title.

Stella was presented with the Certificate of Title by DOLA's Chief Executive, Allan Skinner, as her family, including four great grandchildren, gathered round.

Mr Skinner said that it was appropriate to mark the International Year of Older Persons with a presentation to Stella.

"This year's theme conveys the message that older people deserve recognition as architects and trailblazers of today's society.

"They have a tremendous amount to offer in terms of energy, wisdom, experience and insight," he said.

Stella also received a framed historical photograph of the outside of her house from the Shire of Swan President, Mr Charlie Gregorini, as well as a reproduction of a page from *The West Australian* published on the day she was born.

A final surprise was the performance of the song for the International Year of Older Persons, *I'll Never Stop Dancing Inside*.

Co-composer, Ken Walther, attended the event to sing for Stella, as well as performing another of his compositions for Stella's great grandchildren, the *Captain Kenny* song used by Channel 10.

New Land Administration Act opens the way

It is now possible to create titles for Crown land in the same way as freehold land, under Western Australia's new Land Administration Act.

The new act, which came into effect last year, has opened up the registration of interests over Crown land, which makes up 93 per cent of the State's land and also the sea-bed off Western Australia.

The extended registration system means that Crown interests, including leases and mortgages, may be registered or protected by a caveat. However, licences and mining and petroleum rights are not included in the new system.

Documented interests signed and dated before March 30, 1998 can be registered until March 30, 2003 without losing priority in the registration system and without a registration fee. After this time, however, unregistered interests may be subject to a later, competing interest which is registered.



In the new system, Certificates of Crown Land Title can now be issued for land above and below the high level water mark of Western Australia's territorial waters.

A Certificate of Crown Land Title has been created for the ocean-bed site of the former HMAS Swan.

A lease has been granted to the Geographe Bay Artificial Reef Society, for a period of 21 years, and registered against the title.

Under the new system the lease includes the column of water and air above the seabed.

The Swan was scuttled off Eagle Bay in December 1997 to create an artificial reef for diving observation.

To protect the site, no fishing is allowed within a 200 metre radius of the wreck.

Information on all aspects of registering interests over Crown land can be obtained from DOLA's Customer Information Centre at Midland or on (08) 9273 7044.

The publication Crown Registration Guidelines is available from DOLA or at DOLA's web-site at www.dola.wa.gov.au.

Contents

Development planned for Kalgoorlie

The Department of Land Administration is preparing to develop residential and light industrial land in Kalgoorlie-Boulder.



Kalgoorlie is set for residential and industrial development.

Manager for Land Administration Services, Peter McNally, said that DOLA is working closely with the Kalgoorlie-Boulder Council to get development under way as quickly as possible.

The first stage will see up to 200 residential lots developed in the north-west sector, though the development will eventually include some 5000 lots for residential, commercial and community use.

It will be a fully serviced subdivision, including road, power and sewerage infrastructure.

Mr McNally said that the project would signal the start of a long-term program to develop land in Kalgoorlie-Boulder.

He said that DOLA had been planning the subdivision for a number of years, including plans for education and commercial precincts.

At the same time, DOLA is preparing to develop 52 light industrial lots at the corner of Anzac Road and Great Eastern Highway, in West Kalgoorlie.

The lots range in size from about 2000 square metres to over one hectare.

Contents

Management first for DOLA

DOLA has broken new ground in public sector management. It has adopted a formal Code of Corporate Governance Practice. It is the first of its kind in the public sector, according to consultants from PricewaterhouseCoopers.

The move is in line with best practice in private enterprise. Corporate governance in the private sector is the system by which companies are directed and controlled.

It embodies notions of supervision and oversight, accountability and good stewardship.

Chief Executive Allan Skinner says these concepts of governance are equally applicable in the public sector.

"Their application complements and supports the new structure we adopted in February 1998.

"DOLA is committed to the effective and efficient operation of the purchaser/provider model to ensure a sharper more strategic focus to decisions about direction and priorities, open and accountable operations, and more effective use of resources."

Mr Skinner says DOLA's Code of Corporate Governance Practice sets out the key structures, processes and codes of conduct that together make up the agency's governing framework.

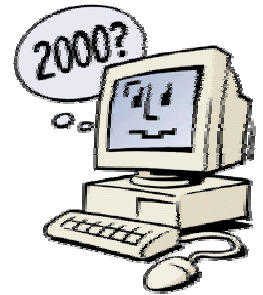
"It will help ensure that DOLA is managed effectively, with clearly understood accountability and with probity.

"The Code is supported by the Executive Board and Alliance Committee Charters.

"With the Code and Charters in place, we can be confident of meeting our governance obligations and build upon the improvements that have been achieved through our new structure."

Contents

DOLA YEAR 2000 Status - as at August 1999



DOLA's comprehensive Year 2000 test program is progressing well.

DOLA is responding to all client enquiries about the Year 2000 program and encourages private and government agencies with queries about specific systems and/or IT interfaces to contact the agency.

- Testing of DOLA's mainframe systems, including the Customer Remote Search and Image System Fax-back services, has been completed. There were no serious issues with any of the systems.
- Data extract files have been supplied to the Department of Minerals and Energy, the Valuer General's Office and State Revenue for testing within their systems.
- The moving of remediated code and a final system upgrade to the Production Mainframe will be finalised by early September.
- Working with MITS and Unisys Australia, DOLA has completed the local and wide area networks upgrade to Year 2000 ready configurations. Upgrades on the test network have been verified, with the network being moved to

production by 21 September, replacing some non-compliant hardware.

- All corporate UNIX systems have now been tested and are Year 2000 ready.
- Rectification work has made building services Year 2000 ready, and Y2K compliance certificates are in place for all building infrastructure.
- Analysis, testing and remediation of all PC and Office systems is continuing and should be finalised by the end of September.
- Work has started on the continuity and contingency plans for the Year 2000 transition.

For any further information please contact Russell Cooper, Year 2000 Project Manager by e-mail at: russell_cooper@dola.wa.gov.au or by telephone on (08) 9273 7517.

Contents

DOLA set for hi-tech delivery

There is to be a trial of software which allows viewing and delivery of 1000 Gigabyte images over the Internet.

The project, which uses new Image Web Server technology, will make DOLA's substantial archive of aerial photography and satellite imagery of Western Australia available on-line.

This will assist DOLA in its role of providing geographic information to manage land in Western Australia.

Frequent updates to this imagery will be added to enable more effective monitoring and management of environmental changes.

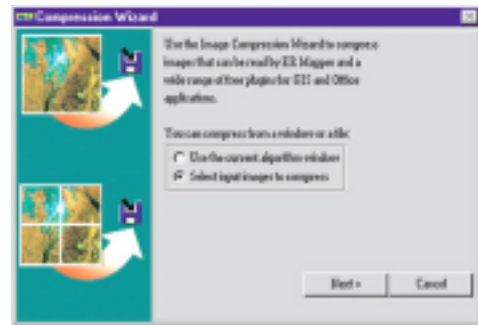
"The success of this project will enable much greater use of aerial and satellite imagery by making it more accessible to a wider group of users in Western Australia", said DOLA's Manager of Satellite Remote Sensing Services, Richard Smith.

The agreement for the project was signed between DOLA and Earth Resource Mapping, creators of the ER Mapper software, on 29 July.

As a long time user of ER Mapper technology, and the premier supplier of satellite imagery and related services in Western Australia, DOLA is in an ideal position to take advantage of the breakthrough Image Web Server technology.

ER Mapper is the world's leading image handling and integrated mapping software, supported by a network of 512 resellers worldwide.

More information on ER Mapper can be found at www.ermapper.com.



New hi-tech software will deliver DOLA's images on line.

Contents