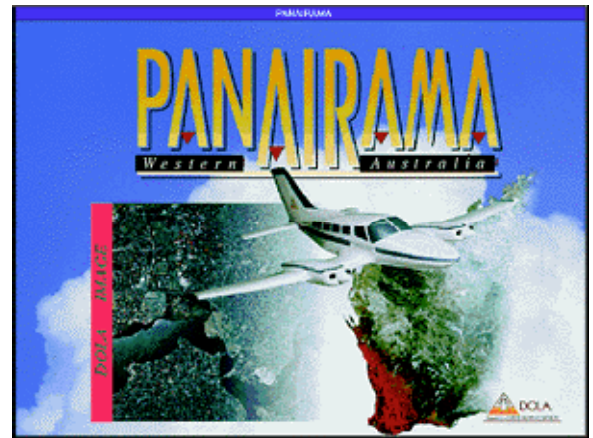


How to use PanAIRama Version 1

The welcoming screen

Press any key or click mouse to continue or wait 2 to 3 seconds.



The next screen lets you choose the zone you are interested in.

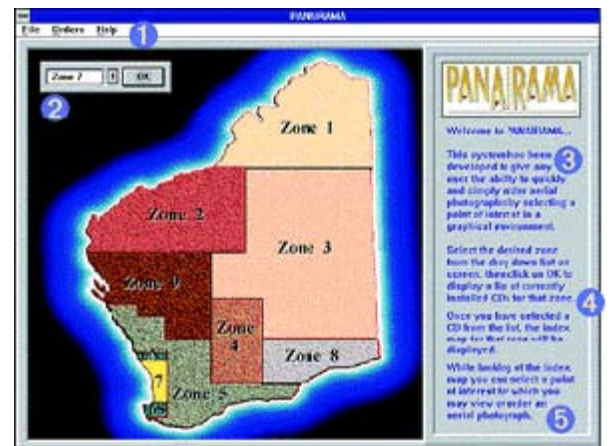
1. Menu Items File

- **Exit:** Leaves PanAIRama.
- Order Details:** Opens order Form.
- File**
- **About:** Program credits.

2. Click left mouse button to select zone of interest from drop down list. Then click OK and select installed CD of interest from displayed list.

3. This light blue text introduces and describes PanAIRama's use.

4. This dark blue text explains how to use this screen. As in all screens in PanAIRama, explanations are a visible guide to you.



Area of Coverage – Map Views.

1. Menu Items File

- **Back:** To previous screen.
- **Exit:** Leaves PanAIRama.

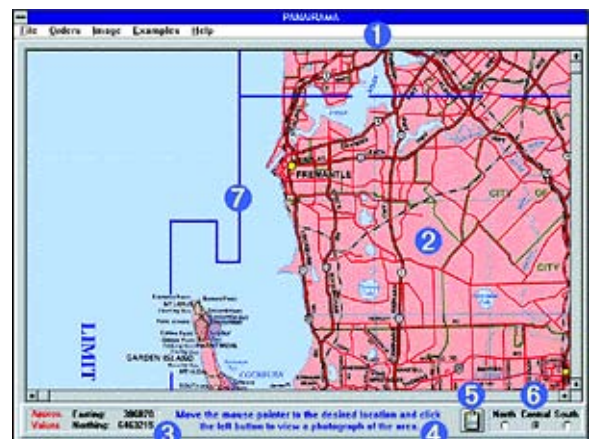
Orders

- **Order details:** Opens order form.

Image

• **Change view:** Switch to an alternative scale index or index type (if available).

• **Zoom:** Create a zoom window. Click right mouse button on index area of interest. Then use left mouse button and zoom window scroll bar to zoom image. Enlarge or shrink zoom window as per normal window operations.

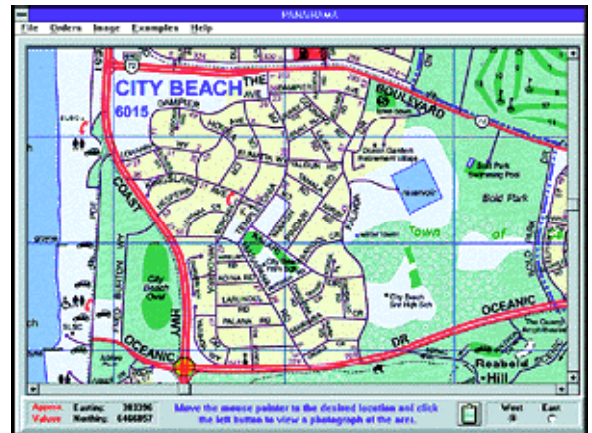


Examples: Shows other image/s if available.

Help

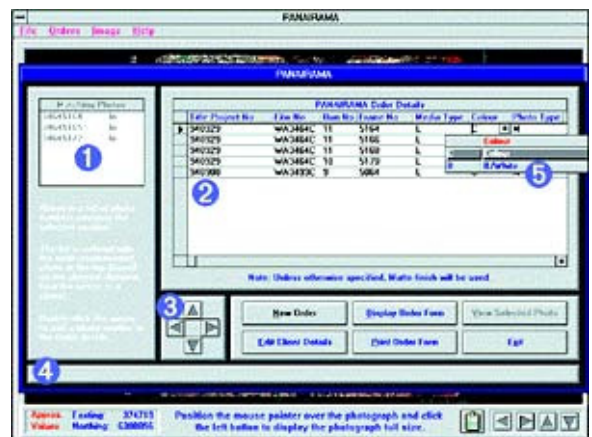
- **About:** Program credits.
- **CD-Info:** Information relevant to the CD or its operation.

2. Click left mouse button anywhere to find images that relate to that spot.
3. Approximate (+/- 300m) Easting and Northing coordinates are continuously displayed.
4. How to use PanAIRama hints are on most screens to assist you in its use.
5. Copy the displayed image to the clipboard.
6. Buttons (if available) to enable the showing of the different sections of a divided index map associated with each CD-R.
7. Line to indicate the limit of imagery for that particular CD-R.



Order form and examples (optional).

1. This is the list of photos that cover the area selected. The top image ID is the image with its centre point closest to the point selected. The others, if any, are merely numerical order. The 2-character code on the right side of the table indicates either scale of photographs (Eg. 20 = 1:20,000) or the resolution of imagery (Eg. LO = Low resolution – 150dpi).
2. This displays the image details necessary to order. You can add a new image by simply double clicking left mouse button in the list on the left. It is also possible to deleted an entry by clicking on the box at the left of the grid and pressing the delete key. Do not edit Film & Run No fields.
3. Use these buttons (if available) to move to the closest photo (North, East, South or West) from previous view.
4. A position sensitive help text window.
5. Via pull down menus, select the type of output you wish to order for EACH photo: Paper or film; matte (default) or Gloss; Colour or Monochrome and size.



For photo enlargements, indicate in the Order Form remarks field the enlargement factor required. For enlargements of a portion of an image, print the image portion via the clipboard. Mark area required and fax with order form.

6. Example showing image detail visible on a simulated x4 photographic enlargement.



Aerial Photo Image Views.

1. Menu Items

File

- **Back:** To previous screen.
- **Exit:** Leaves PanAIRama.

Orders

- **Orders Details:** Opens order form.
- **Order this image:** Adds this image to the Order form.

Image

- **Full screen PF5:** Fits image totally to screen.
- **Zoom:** To create a zoom window. Click right mouse button on image area of interest. Then use left mouse button and zoom window scroll bar to zoom image.

On this view the size of the zoom window cannot be altered.

- **Image Info:** About displayed image.

Help

- **About:** Program credits.
- **CD-Info:** Information relevant to the CD or its operation.

2. Full image at about 1:1 on a 15" screen (clicking left button in the image area, will enlarge if 3-4 times depending on screen size).
3. Approximate (+/-300m) Easting and Northing coordinates are continuously displayed.
4. How to use PanAIRama – hints to assist you.
5. Copy the image to the clipboard.
6. Clicking on the arrows shifts to the next available image left/right/above/below.
7. Zoom window into which the selected image area of interest is loaded.



Western Australian Land Information Authority ABN 86 574 793 858

29th November 2006