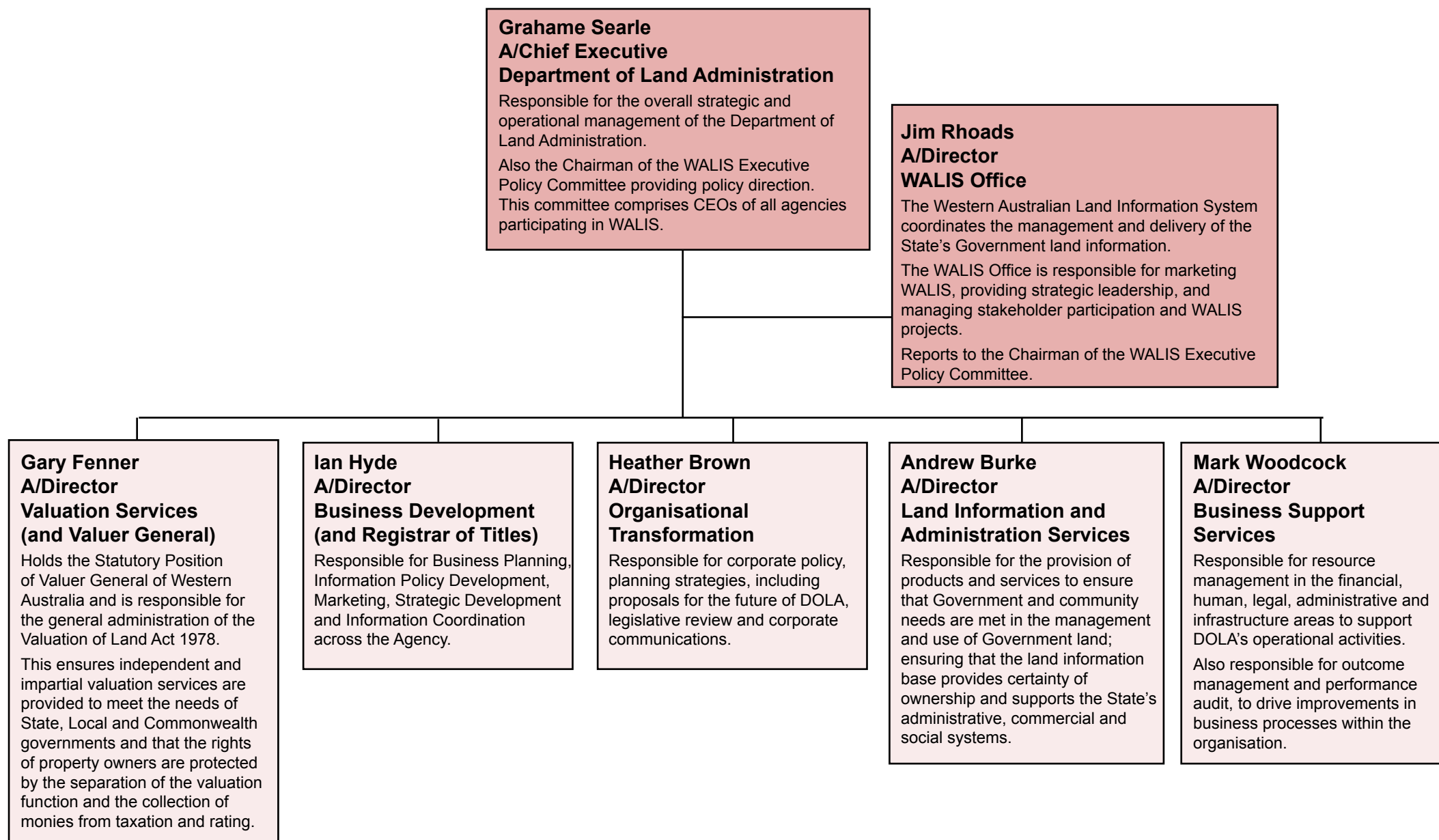


## ORGANISATIONAL OVERVIEW - TRANSITIONAL ORGANISATIONAL CHART



## DOLA's OUTCOME/OUTPUT FRAMEWORK

**MISSION** DOLA contributes to the sustainable growth and prosperity of Western Australia through innovative land services, a world class land information and property infrastructure, and an impartial valuation service.

### OUTCOMES

#### Management of the Government Estate

The administration of Government land supports the economic, environmental and social objectives of the State.

#### Land Information

The State's administrative, commercial and social systems are supported by a land information base and certainty of ownership and other interests in land.

#### Valuation Services

Independent valuations support Government's collection of rates and taxes, and management of property assets.

#### Access to Government Land or Geographic Information

Access to high quality spatial information is facilitated and coordinated by the Western Australian Land Information System (WALIS) office for the benefit of all Western Australians.

### OUTPUTS

Government land is administered and managed for residential, commercial, industrial, conservation, heritage and other community purposes.

Information about land and land ownership is collected, recorded and made available for use by Government, business and the community

An impartial valuation and property information service.

Land information from WALIS stakeholder agencies is managed in a coordinated way so that data held by agencies can be integrated and readily accessed to meet Government, business and community needs.

## Corporate Governance

An effective corporate governance framework optimises business performance by ensuring transparent and ethical management practices.

DOLA's Code of Corporate Governance Practice and the Executive Board Charter provide a governance framework that facilitates a high standard of leadership and direction for the agency. The Executive Board and its sub-committees operate in a manner consistent with sound management practice, and ensure that the organisation implements Government policy with openness and integrity, in the best interests of its customers and stakeholders. DOLA has controls in place for business planning, compliance reporting, risk management and monitoring of operational performance.

## Transitional Arrangements

In August 2001 with the approval of the Department of Premier and Cabinet, DOLA put in place a transitional structure. At 30 June 2003, the transitional Executive Board comprised the Acting Chief Executive Officer and five Acting Directors: Business Support Services; Land Administration and Information Services; Valuation Services; Organisational Transformation; and Business Development.

## The Executive Board

The Chief Executive Officer has ultimate responsibility to the Minister for DOLA's performance and is supported by the Executive Board, DOLA's principal governing body. The Executive Board is responsible for:

- developing and monitoring corporate directions;
- overseeing an effective control environment;
- budgeting and planning;
- monitoring operational management outcomes; and
- achieving accountability and compliance with Government requirements.



*Executive Board Members*