

November 1999

CONTENTS

- Overview of Business Activity**
- Documents Lodged**
- Searches Performed**
- Plans and Diagrams Lodged**
- DOLA Government Land Overview**

Business Activity Highlights

November business levels increased across all activities, and when compared to the same period last year, some substantial rises in business were reflected:

- Average daily document lodgements for November 1999 (1380) increased by 4.9% from October (1316) and was 16.9% higher than November 1998 (1181).
- 7933 land transfers were lodged, a 9.2% increase from the previous month and a substantial 19.4% from November 1998.
- The number of subdivisional lots created (1754) increased by 22% from October, and represented a 50% increase from November 1998 (1167).
- 639 strata lots were created, a 29% increase from the previous month (495), and 7.8% higher than November last year (593).

Document Registration Lodgements

Documents are lodged at the Service Delivery Division to register land transactions. "Documents" include Transfers, Mortgages, and Discharge of Mortgages.

The average daily document lodgement for November 1999 was 1380 documents per day, an increase of 4.9% from October (1316) and a 16.9 % increase from the November 1998 figure of 1181. Currently, average daily document lodgements levels are the highest since 1988.

The number of transfers lodged for November totalled 7933. This was an increase of 9.2% from the previous month (7266), and represented a 19.4% increase from November 1998 (6643). It was the highest number of transfers lodged during a month since June 1998 (8071).

The majority of transfer documents lodged (2562) were in the \$0 - \$85,000 consideration price range, followed by 2273 transfers in the \$120,001 - \$200,000 range. The total transfer consideration for the month was \$1.35 billion.

The number of mortgages lodged for November totalled 8869 and amounted to \$2.3 billion.

Land Title Searches

"Searching" is a conveyancing term and is, essentially, obtaining a copy of a statutory document (Certificate of Title, Survey, etc.) held by the Service Delivery Division.

Average daily searches (all types) for November 1999 (5118) showed a marginal increase of 1.2% from the previous month (5055). It was, however, the highest figure for average daily searches since March 1997, and represented an 8% increase over the November 1998 figure of 4742.

Daily title searches averaged 3247, an increase of 1.6% from October (3195). This represented a 9.8% increase on the November 1998 figure of 2958.

Daily check searches averaged 731, an increase of 1.6% from October (719), and the highest figure since April 1999 (731).

Creation of New Lots

New lots created are defined as new lots created by subdivisional plan or diagram or by strata plan. The statistics for new lots created is a gross figure, in that existing lots that are extinguished are not subtracted.

There were 78 plans and 250 diagrams lodged in November 1999 creating 1754 subdivisional lots, an increase of 22% from October (1435). It was a 50% increase above the number of subdivisional lots created in November 1998 (1167).

During November, 178 strata plans were lodged, which created 639 strata lots. This represented a 29% increase from October (495), and was 7.8% higher than November last year (593).

Performance Indicators

Number of Days to Register a Transaction Against a Certificate of Title - 75% of Documents within 5.2 Days.

During November 1999, an average of 5.8 days was taken to register a transaction against a Certificate of Title, a decrease from the previous month (7.76 days). It is expected that the level of this Performance Indicator will continue to decrease, as a result of measures taken over the past months to reduce turn-around times. This has resulted in the year-to-date Performance Indicator being reduced from 7 days to 6.8 days.

Number of Days to Register a Certificate of Title for Large Subdivisions - 5 Days.

November recorded an average of 4.4 days to register a Certificate of Title over large subdivisions, which is below the required Performance Indicator.

Graphs indicating progress on Performance Indicators appear under the Documents Lodged section of this report.

Peter Eddy
A/DIRECTOR
SERVICE DELIVERY

6 December 1999

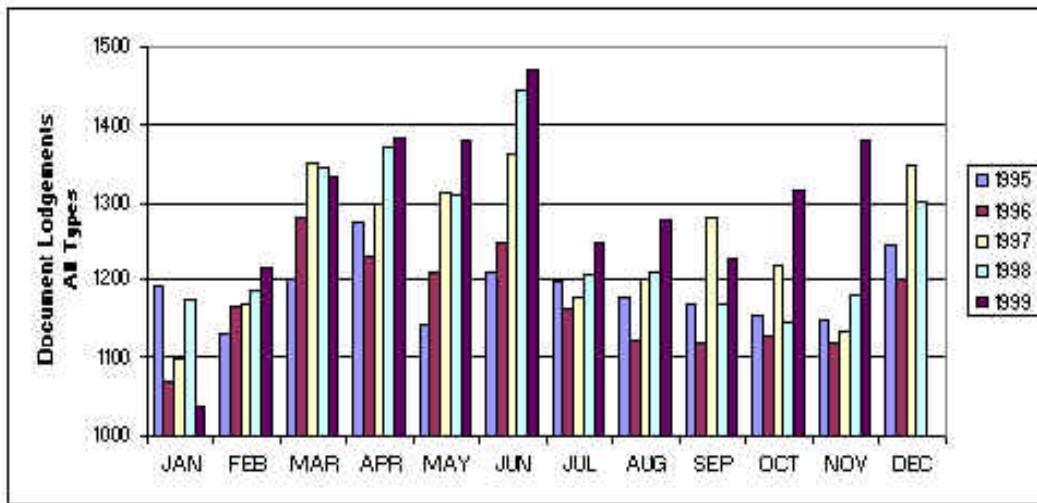
FOR YOUR ATTENTION

For further information please contact the Executive Assistant, Fran Dastlik on (08) 9273 7306.

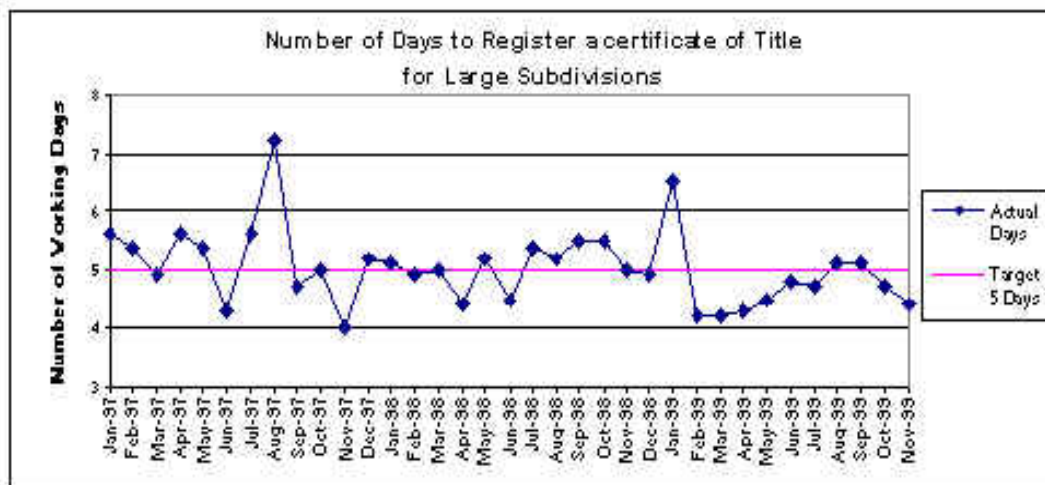
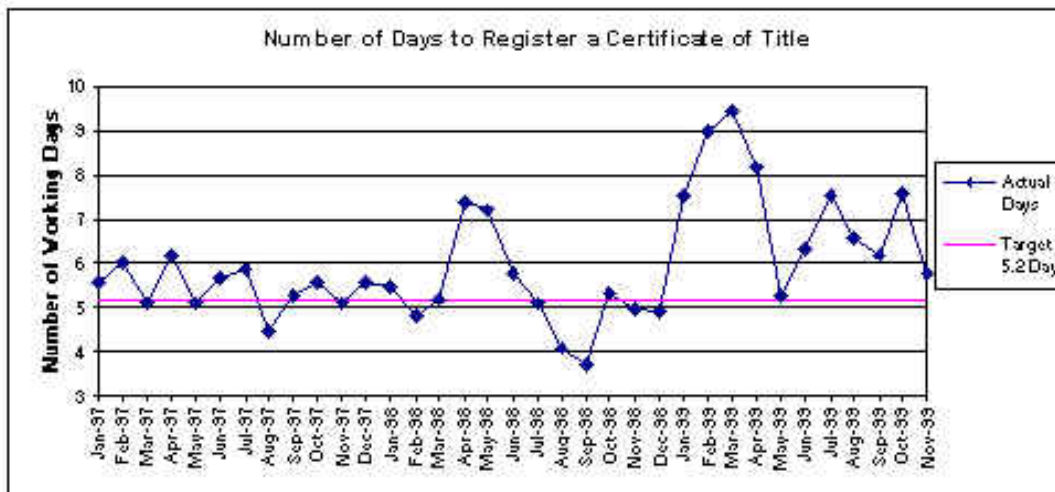
DISCLAIMER: The Department of Land Administration accepts no responsibility or any liability or obligation for the accuracy of the information and comments contained herein or for the consequences of any actions persons may take on the basis of information or comments contained herein.

Return to [Contents](#)

Documents Lodged Average Daily Document Lodgements



Registration Time Achievement Against 1999/2000 Targets



Monthly Transfer Lodgements November 1999

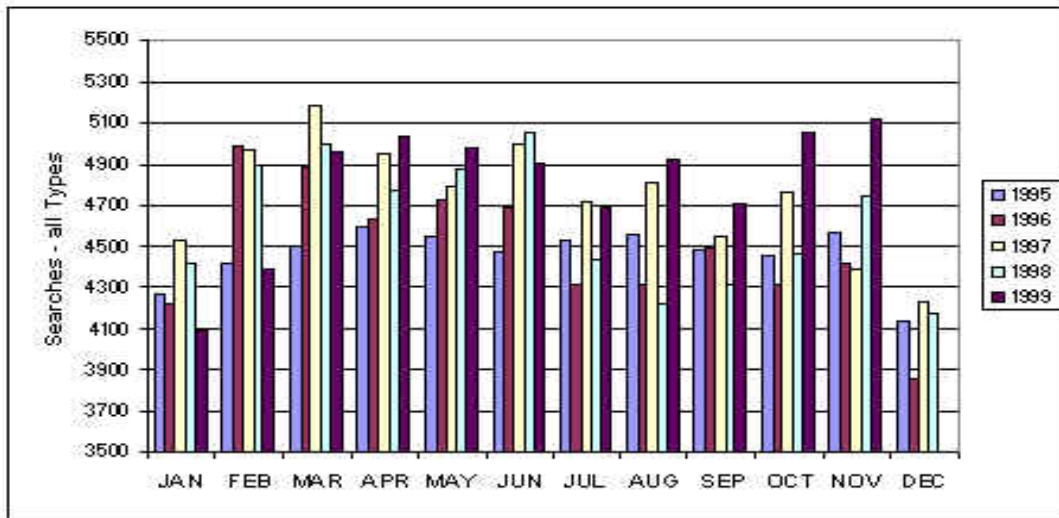
CONSIDERATION \$	NUMBER LODGED
0 - 85,000	2562
85,001 - 120,000	1322
120,001 - 200,000	2273
200,001 - 300,000	1006
300,001 - 400,000	359
400,001 - 500,000	145
500,001 - 600,000	64
600,001 - 700,000	49
700,001 - 800,000	40
800,001 - 900,000	24
900,001 - 1,000,000	18
1,000,001 - 2,000,000	49
2,000,001 - 3,000,000	13
3,300,001 - 3,600,000	2
4,400,001 - 4,500,000	1
5,800,001 - 5,900,000	1
6,400,001 - 6,500,000	1
9,800,000 - 9,900,000	1
10,600,000 - 10,700,000	1
12,700,001 - 12,800,000	1
22,200,001 - 22,300,000	1
TOTAL	7932

Overview of Categories of Document Lodgements 1999/2000

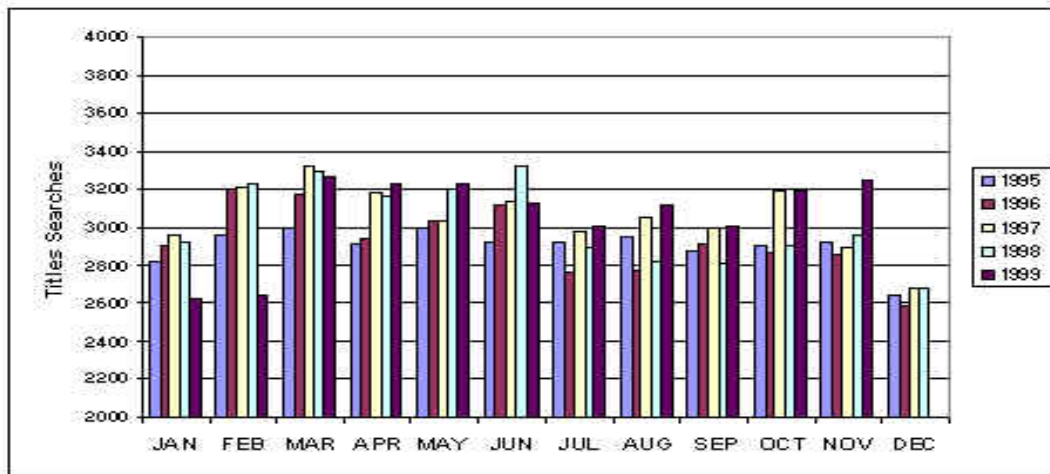
MONTH 1999/2000	NO	TRANSFERS		MORTGAGES					DOCUMENTS				
		CONSIDERATION \$	NO	PRINCIPAL \$	DISCH	APPLIC	W/CA V	CAV	LEASE	P/A	MISC	SUND	LODGED
JULY													
Totals	6,923	1,164,556,767	8,066	1,829,964,849	7,097	2,073	780	785	85	507	657	489	27,462
AUGUST													
Totals	7,360	1,408,382,097	8,150	1,862,360,659	7,104	2,020	859	826	102	464	693	494	28,072
SEPTEMBER													
Total	7,169	1,113,591,926	7,813	1,598,281,229	6,837	1,970	830	873	116	420	659	356	27,043
OCTOBER													
Totals	7,266	1,316,802,022	8,119	1,721,723,793	7,033	2,052	771	761	70	418	674	478	27,642
NOVEMBER													
Totals	7,933	1,353,460,780	8,869	2,433,270,863	7,664	2,444	828	783	104	487	649	603	30,364
TOTALS	36,651	6,356,793,592	41,017	9,445,601,393	35,735	10,559	4,068	4,028	477	2,296	3,332	2,420	140,583

[Return to Contents](#)

Searches Performed Average Daily Searches – All Types

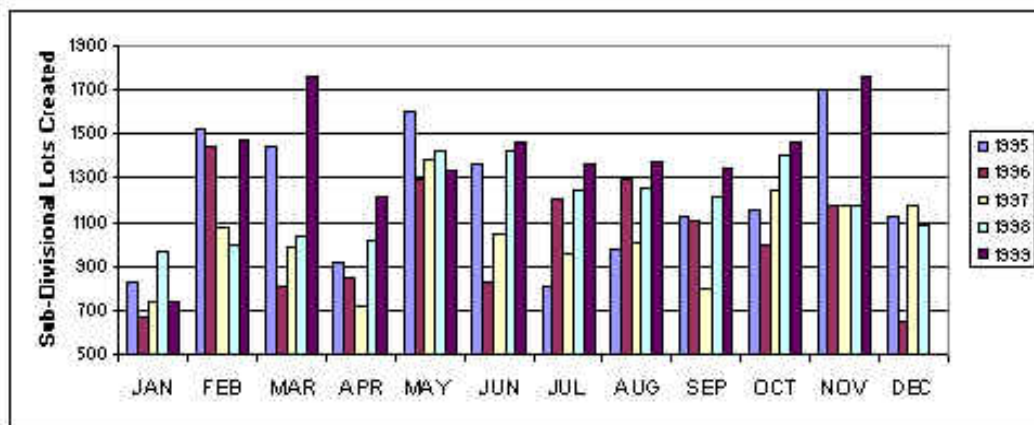


Average Daily Title Searches



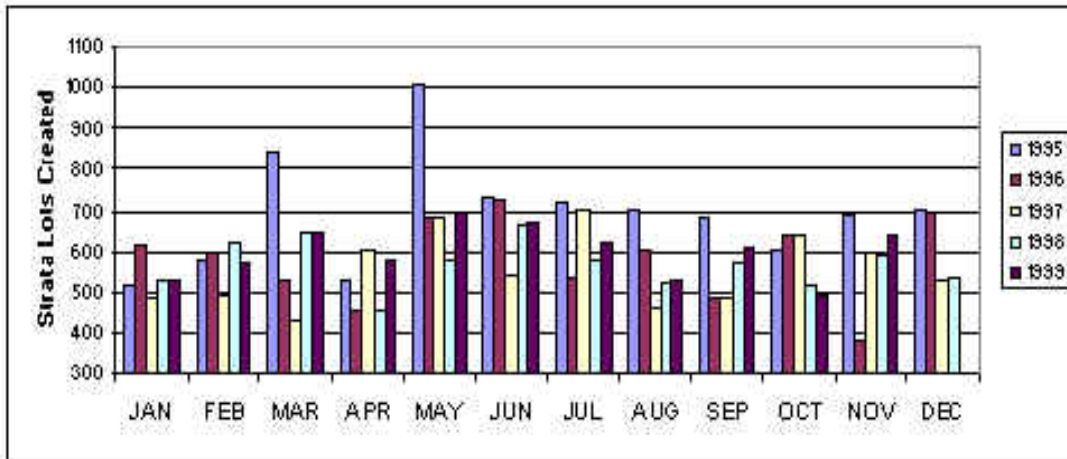
[Return to Contents](#)

Plans and Diagrams Lodged Monthly Total of Sub-Divisional Lots Created



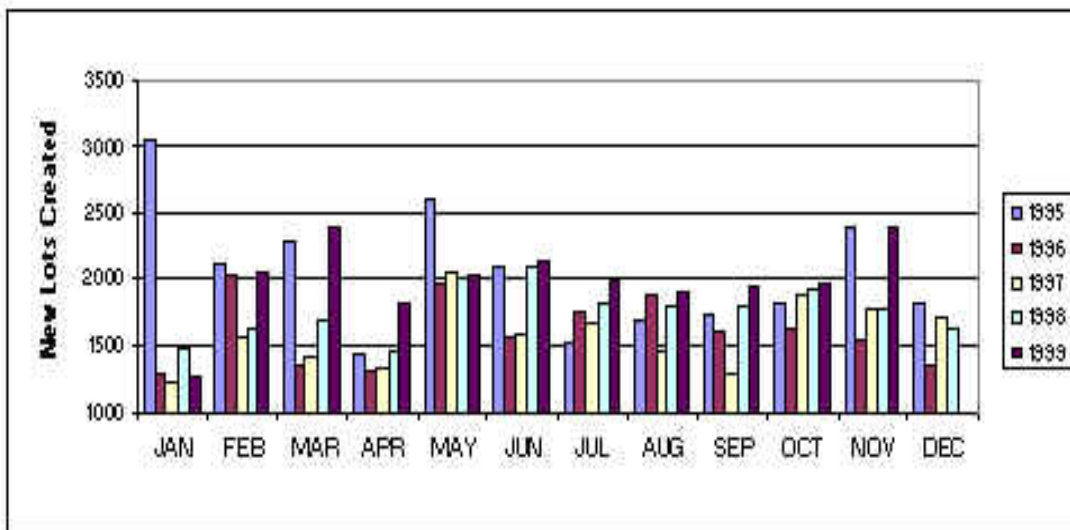
FINANCIAL YEARS	1993/94	1994/95	1995/96	1996/97	1997/98	1998/99
NUMBER OF LOTS	19774	20037	12792	12361	13238	15364

Monthly Total of Strata Lots Created



FINANCIAL YEARS	1993/94	1994/95	1995/96	1996/97	1997/98	1998/99
NUMBER OF LOTS	8342	8992	7690	6569	6893	6995

Monthly Total of New Lots Created



FINANCIAL YEARS	1993/94	1994/95	1995/96	1996/97	1997/98	1998/99
NUMBER OF LOTS	28117	30718	20482	18530	20131	22359

[Return to Contents](#)

DOLA Government Land Overview

LAND SALES

DATE SOLD	TOWN/DISTRICT	LOT/LOCATION	PURPOSE	AREA (HA)	PRICE \$
10/11/99	DOODLAKINE	216	RESIDENTIAL	0.1330	600.00
11/11/99	SWAN (BOLD PARK)	12896	RESIDENTIAL	1.7475	3,700,000.00
12/11/99	WALLISTON	119	RESIDENTIAL	0.2026	60,000.00
17/11/99	FITZROY CROSSING	305	RESIDENTIAL	0.1322	54,600.00
17/11/99	FITZROY CROSSING	308	RESIDENTIAL	0.0934	37,600.00
23/11/99	MOORINE ROCK	52	RURAL RESIDENTIAL	1.9905	9,000.00
24/11/99	DERBY	1325	RESIDENTIAL	0.0773	26,000.00
24/11/99	MARBLE BAR	272	RESIDENTIAL	0.1132	11,700.00
29/11/99	KALANNIE	112	RESIDENTIAL	0.1012	6,500.00
TOTAL					3,906,000.00

LAND UNDER OFFER

TOWN/DISTRICT	NO OF LOTS	PURPOSE
LAVERTON	1	RESIDENTIAL
NULLAGINE	1	RESIDENTIAL
FITZROY CROSSING	1	LIGHT INDUSTRIAL
KALBARRI	1	RESIDENTIAL

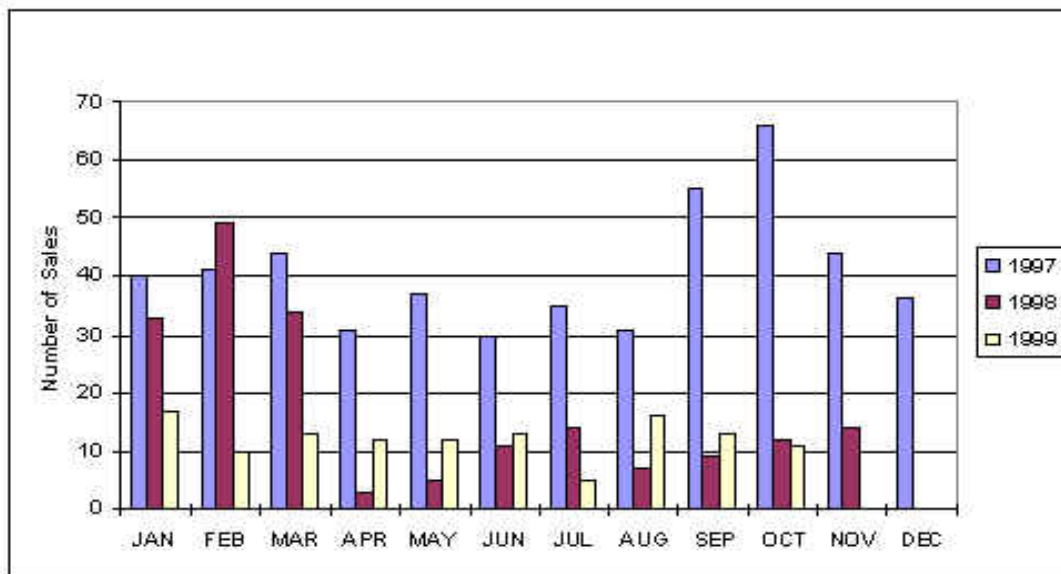
FORTHCOMING AUCTIONS

TOWNS	LOTS OFFERED	DATE OF AUCTION
DUNCRAIG	1	NOVEMBER/DECEMBER 1999
LEDGE POINT	8	DECEMBER 1999
KALGOORLIE	7	DECEMBER 1999/JANUARY 2000

LAND AUCTIONS

TOWNS	LOTS OFFERED	LOTS SOLD	TOTAL RESERVE PRICE \$	PRICE REALISED \$
HARVEY	68	4	TBA	TBA

Government Land Sales - November 1999



* Note: Digital copies of these statistics began during the 1996/97 financial year.

[Return to Contents](#)