

February 2000

CONTENTS

Overview of Business Activity

Documents Lodged

Searches Performed

Plans and Diagrams Lodged

DOLA Government Land Overview

Business Activity Highlights

Business activity levels increased slightly in a majority of areas and represented the highest February figures for the past six years.

- Average daily document lodgements for February 2000 (1237) decreased by 7.5% from January (1337), although it was the highest figure for February since 1994.
- Transfer documents lodgements for February (6668) increased by 8.7% from the previous month (6132).
- The total number of subdivisional lots created during February was 920, similar to the January figure of 911.

Document Registration Lodgements

Documents are lodged at the Service Delivery Division to register land transactions. "Documents" include Transfers, Mortgages, and Discharge of Mortgages.

The average daily document lodgement for February 2000 was 1237 documents per day. Whilst this was a moderate decrease of 7.5% from January (1337), it was the highest average daily document lodgement figure for February since 1994 (1430).

The number of transfers lodged for February totalled 6668, an 8.7% increase from the January figure of 6132. It was also the highest February transfer lodgement since 1994 (7784).

The majority of transfer documents lodged (2070) were in the \$0 - \$85,000 consideration price range, followed by 1890 transfers in the \$120,001 - \$200,000 range. The total transfer consideration for the month was \$1.2 billion.

The number of mortgages lodged for February totalled 7353 and amounted to \$1.6 billion.

Land Title Searches

"Searching" is a conveyancing term and is, essentially, obtaining a copy of a statutory document (Certificate of Title, Survey, etc.) held by the Service Delivery Division.

Average daily searches (all types) for February 2000 were 5284, an increase of 4.5 % from January 2000 (5058).

Daily title searches averaged 3405, an increase of 5% from the previous month (3244).

Daily check searches averaged 644, an 8.3% decrease from January (702).

Creation of New Lots

New lots created are defined as new lots created by subdivisional plan or diagram or by strata plan. The statistics for new lots created is a gross figure, in that existing lots that are extinguished are not subtracted.

There were 35 plans and 194 diagrams lodged in February 2000 creating 920 subdivisional lots, a slight increase of 1% from the figure recorded during January of 911. Over the last five years, figures for February have averaged 1184 subdivisional lots.

During February, 147 strata plans were lodged which created 548 strata lots. This was a 10.7 % increase from January (495).

Performance Indicators

Number of Days to Register a Transaction Against a Certificate of Title - 75% of Documents within 5.2 Days.

During February 2000, the number of days to register a transaction against a Certificate of Title was 4.6 days, a reduction from the previous month (5.6 days). This is below the required Performance Indicator of 5.2 days.

Number of Days to Register a Certificate of Title for Large Subdivisions - 5 Days.

February recorded an average of 6 days to register a Certificate of Title over large subdivisions, which was a decrease from the previous month of 6.3 days. However, the year-to-date Performance Indicator of 5.1 days is slightly over the required Performance Indicator of 5 days.

Graphs indicating progress on Performance Indicators appear under the Documents Lodged section of this report.

**GRAHAME SEARLE
DIRECTOR
SERVICE DELIVERY**

14 March 2000

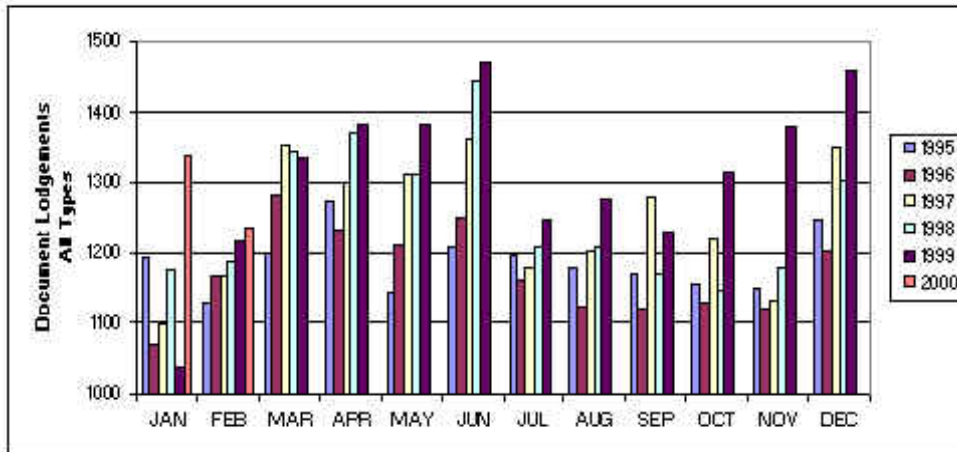
FOR YOUR ATTENTION

For further information please contact the Executive Assistant, Fran Dastlik on (08) 9273 7306.

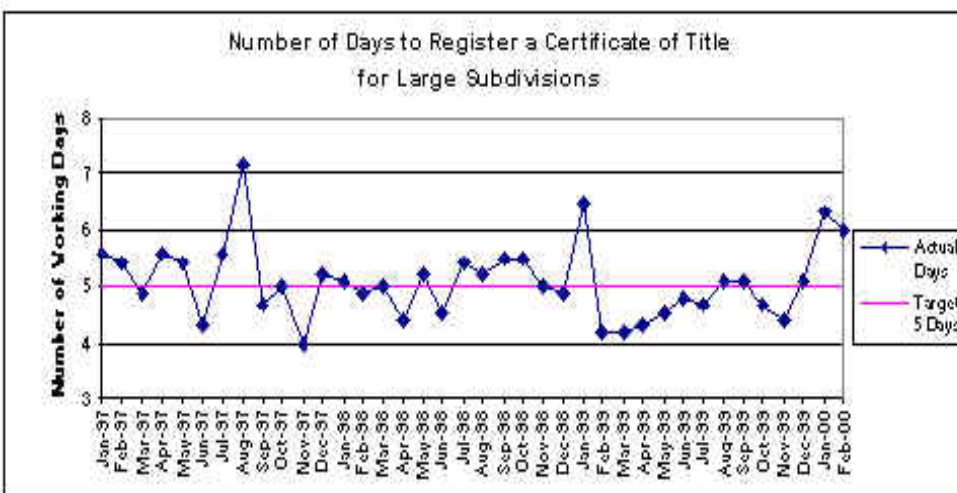
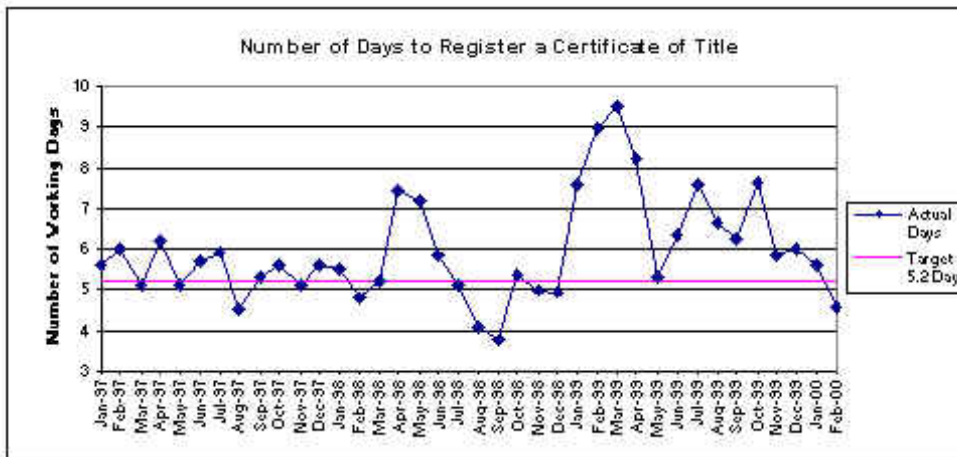
DISCLAIMER: The Department of Land Administration accepts no responsibility or any liability or obligation for the accuracy of the information and comments contained herein or for the consequences of any actions persons may take on the basis of information or comments contained herein.

Return to [Contents](#)

Documents Lodged Average Daily Document Lodgements



Registration Time Achievement Against 1999/2000 Targets



Monthly Transfer Lodgements February 2000

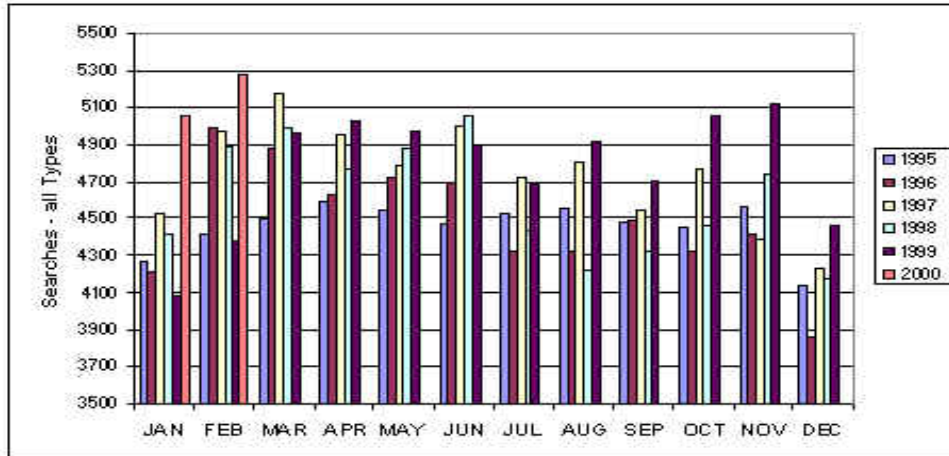
CONSIDERATION \$	NUMBER LODGED
0 - 85,000	2070
85,001 - 120,000	1105
120,001 - 200,000	1890
200,001 - 300,000	889
300,001 - 400,000	320
400,001 - 500,000	142
500,001 - 600,000	71
600,001 - 700,000	50
700,001 - 800,000	19
800,001 - 900,000	17
900,001 - 1,000,000	16
1,000,001 - 2,000,000	61
2,000,001 - 2,800,000	9
3,200,001 - 3,700,000	5
5,200,001 - 5,300,000	1
10,500,001 - 10,600,000	1
18,900,001 - 19,000,000	1
61,400,001 - 61,500,000	1
TOTAL	6668

Overview of Categories of Document Lodgements 1999/2000

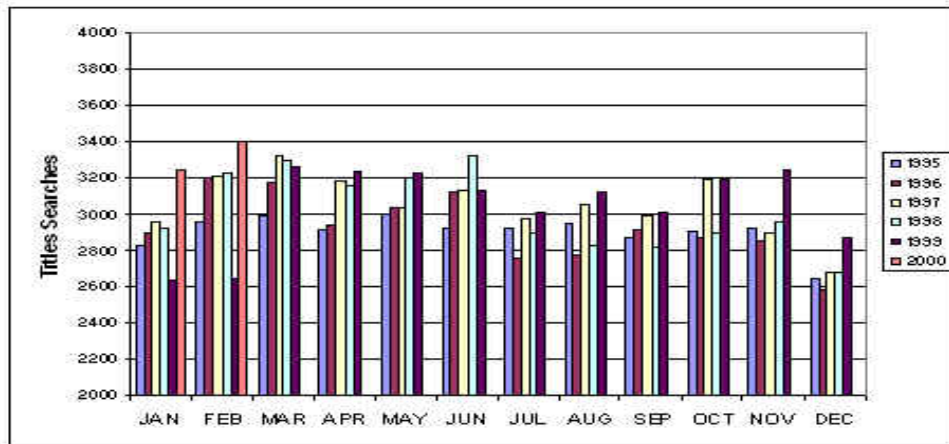
MONTH 1999/2000	TRANSFERS			MORTGAGES					DOC'S				
	NO	CONSIDERATION \$	NO	PRINCIPAL \$	DISCH	APPLIC	W/CAV	CAV	LEASE	P/A	MISC	SUND	LODGED
JULY													
Totals	6,923	1,164,556,767	8,066	1,829,964,849	7,097	2,073	780	785	85	507	657	489	27,462
AUGUST													
Totals	7,360	1,408,382,097	8,150	1,862,360,659	7,104	2,020	859	826	102	464	693	494	28,072
SEPTEMBER													
Total	7,169	1,113,591,926	7,813	1,598,281,229	6,837	1,970	830	873	116	420	659	356	27,043
OCTOBER													
Totals	7,266	1,316,802,022	8,119	1,721,723,793	7,033	2,052	771	761	70	418	674	478	27,642
NOVEMBER													
Totals	7,933	1,353,460,780	8,869	2,433,270,863	7,664	2,444	828	783	104	487	649	603	30,364
DECEMBER													
Totals	8,193	1,420,575,229	9,235	2,096,214,907	7,877	2,060	853	701	70	411	662	549	30,611
JANUARY													
Totals	6,132	1,041,471,681	6,978	1,657,215,225	5,876	1,838	668	651	81	391	656	734	24,005
FEBRUARY													
Totals	6,668	1,223,750,182	7,353	1,632,260,259	6,500	2,070	775	724	87	517	688	589	25,971
TOTALS	57,644	10,042,590,684	64,583	14,831,291,784	55,988	16,527	6,364	6,104	715	3,615	5,338	4,292	221,170

[Return to Contents](#)

Searches Performed Average Daily Searches – All Types

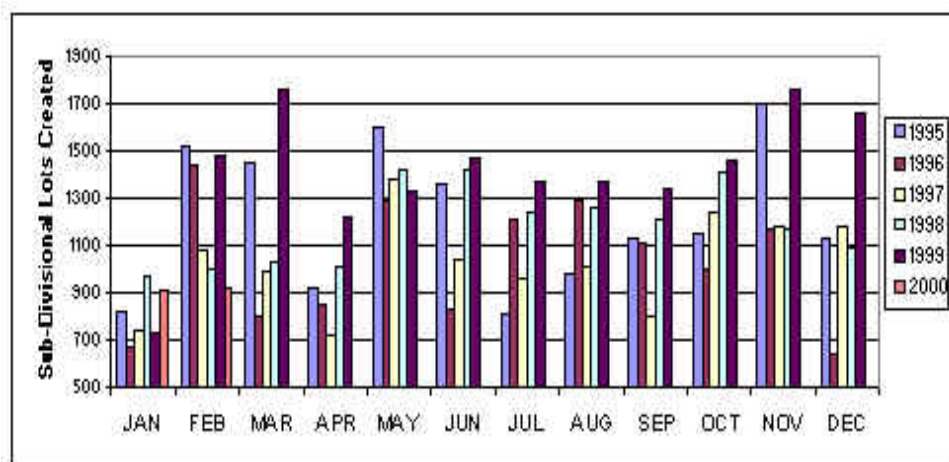


Average Daily Title Searches



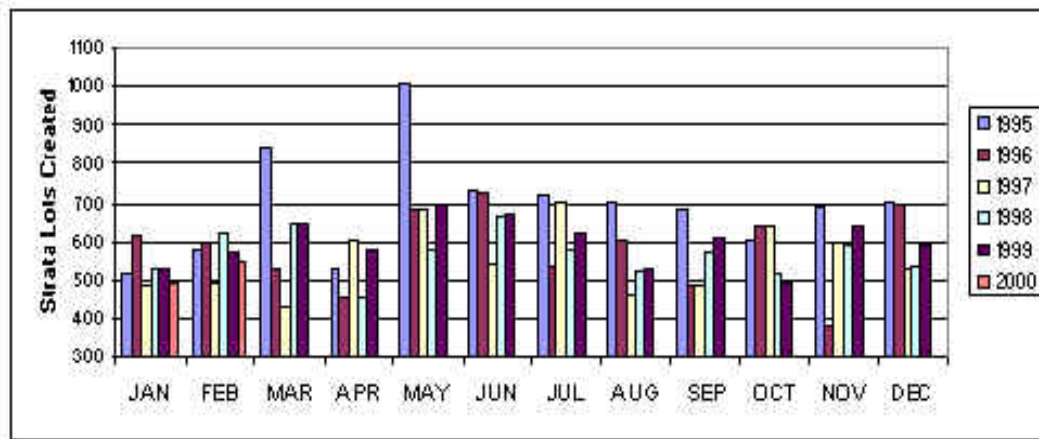
[Return to Contents](#)

Plans and Diagrams Lodged Monthly Total of Sub-Divisional Lots Created



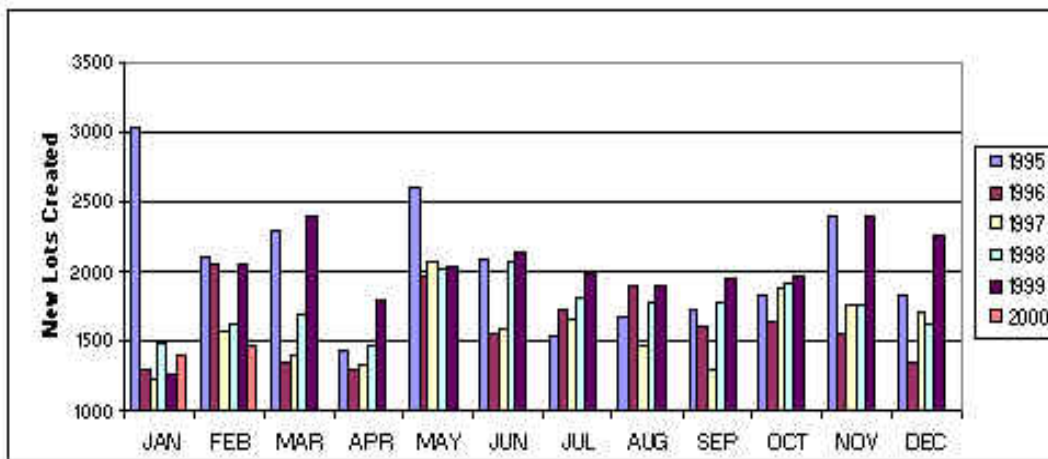
FINANCIAL YEARS	1993/94	1994/95	1995/96	1996/97	1997/98	1998/99
NUMBER OF LOTS	19774	20037	12792	12361	13238	15364

Monthly Total of Strata Lots Created



FINANCIAL YEARS	1993/94	1994/95	1995/96	1996/97	1997/98	1998/99
NUMBER OF LOTS	8342	8992	7690	6569	6893	6995

Monthly Total of New Lots Created



FINANCIAL YEARS	1993/94	1994/95	1995/96	1996/97	1997/98	1998/99
NUMBER OF LOTS	28117	30718	20482	18530	20131	22359

[Return to Contents](#)

DOLA Government Land Overview

LAND SALES

DATE SOLD	TOWN/DISTRICT	LOT? LOCATION	PURPOSE	AREA (HA)	PRICE \$
01/02/00	FITZROY CROSSING	295	RESIDENTIAL	0.1318	54,400.00
01/02/00	LEDGE POINT	717	RESIDENTIAL	0.0813	42,500.00
02/02/00	LEDGE POINT	651	RESIDENTIAL	0.0802	43,500.00
02/02/00	LEDGE POINT	714	RESIDENTIAL	0.0787	42,500.00
02/02/00	PORT HEDLAND	3795	LIGHT INDUSTRIAL	0.4422	23,250.00
07/02/00	GIBSON	121	GRAZING	61.7077	90,000.00
11/02/00	LEDGE POINT	709	RESIDENTIAL	0.0742	45,000.00
15/02/00	EDEL	39/70	WATER SUPPLY	3.1849	1.00
16/02/00	HOPETOUN	601	RESIDENTIAL	0.1009	17,500.00
16/02/00	ONGERUP	255	RESIDENTIAL	0.1292	1,100.00
16/02/00	ONGERUP	257	RESIDENTIAL	0.1080	1,000.00
23/02/00	PORT DENISON	801	RESIDENTIAL	0.0800	31,500.00
					392,251.00

LAND UNDER OFFER

TOWN/DISTRICT	NO OF LOTS	PURPOSE
LEDGE POINT	1	RESIDENTIAL
KARRATHA	1	RESIDENTIAL
KALBARRI	1	RESIDENTIAL

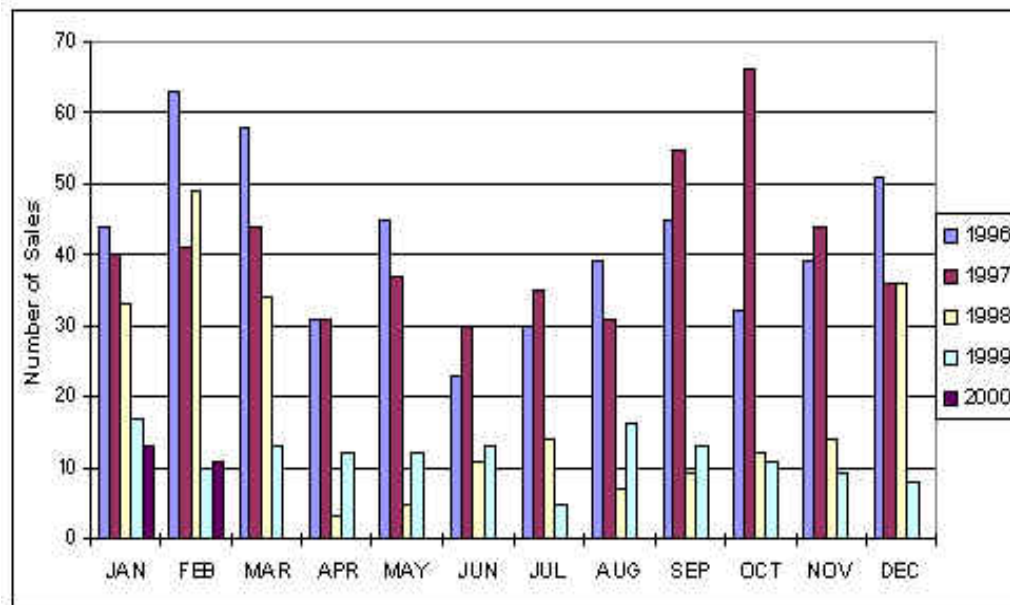
FORTHCOMING AUCTIONS

TOWNS	LOT OFFERED	DATE OF AUCTION
GREENHEAD	1	MAY/JUNE

LAND AUCTIONS

TOWN	LOTS OFFERED	LOTS SOLD	TOTAL RESERVE PRICE \$	PRICE REALISED \$
DUNCRAIG	-	-	-	NOT SOLD

Government Land Sales - February 2000



* Note: Digital copies of these statistics began during the 1996/97 financial year.

[Return to Contents](#)