

January 2000

CONTENTS

Overview of Business Activity
Documents Lodged
Searches Performed
Plans and Diagrams Lodged
DOLA Government Land Overview

Business Activity Highlights

During January 2000, business activity reduced considerably from the high levels experienced in December 1999. This was expected and followed a seasonal trend for the beginning of a New Year, however, most of the business levels recorded during the month represented the highest January figures for the past six years.

- Average daily document lodgements for January 2000 (1337) decreased by 8.3% from December (1458) yet remained 29% higher than January 1999 (1037).
- 6132 land transfers were lodged, a 25% decrease from the previous month (8193), though 8% higher than January 1999 (5678).
- 911 subdivisional lots were created, and represented a decrease of 45% from the high December figure, however, showed a 24% increase over January 1999.

Document Registration Lodgements

Documents are lodged at the Service Delivery Division to register land transactions. "Documents" include Transfers, Mortgages, and Discharge of Mortgages.

The average daily document lodgement for January 2000 was 1337 documents per day. This was a decrease of 8.3% from the previous month (1458), and 29% higher than January 1999 (1037). It was also the highest daily document lodgement figure for January since 1994 (1354).

The number of transfers lodged for January totalled 6132, a 25% decrease from the high lodgement levels of December 1999 (8193), and an 8% increase on the January 1999 figure of 5678. It was the highest January transfer lodgement since 1994 (7027).

The majority of transfer documents lodged (1932) were in the \$0 - \$85,000 consideration price range, followed by 1746 transfers in the \$120,001 - \$200,000 range. The total transfer consideration for the month was \$1 billion.

The number of mortgages lodged for January totalled 6978 and amounted to \$1.7 billion.

Land Title Searches

"Searching" is a conveyancing term and is, essentially, obtaining a copy of a statutory document (Certificate of Title, Survey, etc.) held by the Service Delivery Division.

Average daily searches (all types) for January 2000 (5058) increased by 13.5 % from December 1999 (4458), and represented a 24% increase from the January 1999 figure of 4085.

Daily title searches averaged 3244, an increase of 12.8% from the previous month (2875), and a 23.4% increase from January 1999 (2629).

Daily check searches averaged 702, an increase of 5% from the previous month (669), and 34.7% higher than the January 1999 figure of 521.

Creation of New Lots

New lots created are defined as new lots created by subdivisional plan or diagram or by strata plan. The statistics for new lots created is a gross figure, in that existing lots that are extinguished are not subtracted.

There were 45 plans and 180 diagrams lodged in January 2000 which created 911 subdivisional lots. This was a decrease of 45.2% from the figure recorded during December 1999 of 1663. This decrease followed seasonal trends, however it was a significant increase of 24% when compared to the January 1999 figure of 733. Over the last five years, figures for January have averaged 802 subdivisional lots.

136 strata plans were lodged during January and 495 strata lots were created. This was a 16.6 % decrease from December (594), and 6.6% lower than January 1999 (530).

The monthly total of new lots created (1697) remained the highest number of subdivisional lots created for January, for five years.

Performance Indicators

Number of Days to Register a Transaction Against a Certificate of Title - 75% of Documents within 5.2 Days.

During January 2000, an average of 5.6 days was taken to register a transaction against a Certificate of Title, a reduction from the previous month of 6.0 days.

Number of Days to Register a Certificate of Title for Large Subdivisions - 5 Days.

January recorded an average of 6.3 days to register a Certificate of Title over large subdivisions, which was an increase from the previous month (5.1 days). However, the year-to-date Performance Indicator is currently 4.9 days.

Graphs indicating progress on Performance Indicators appear under the Documents Lodged section of this report.

**GRAHAME SEARLE
DIRECTOR
SERVICE DELIVERY**

7 February 2000

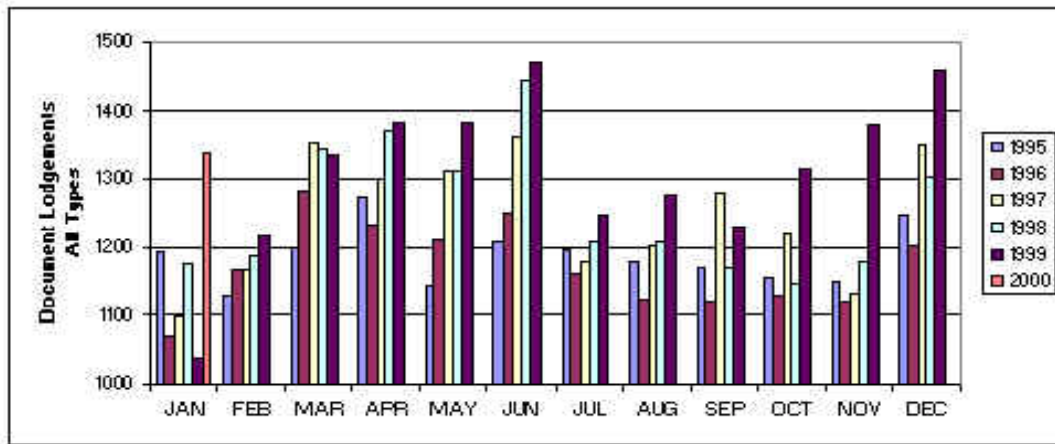
FOR YOUR ATTENTION

For further information please contact the Executive Assistant, Fran Dastlik on (08) 9273 7306.

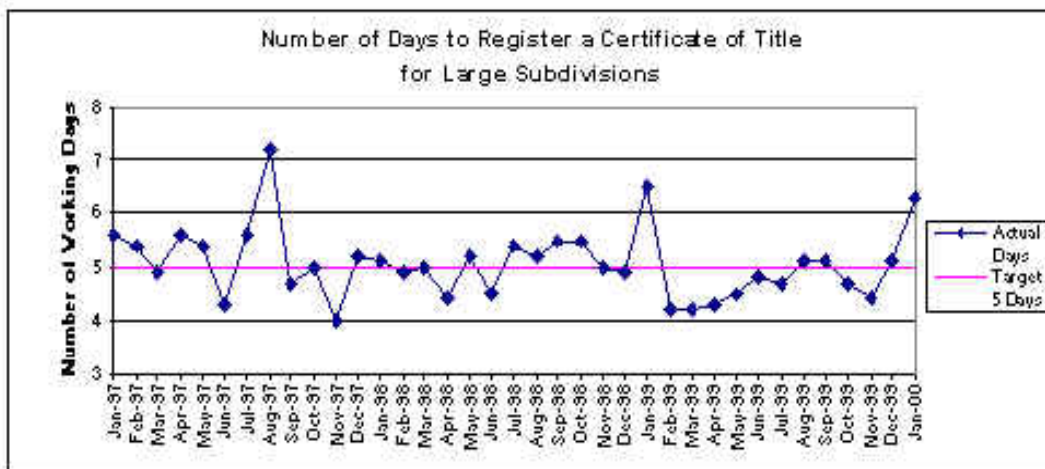
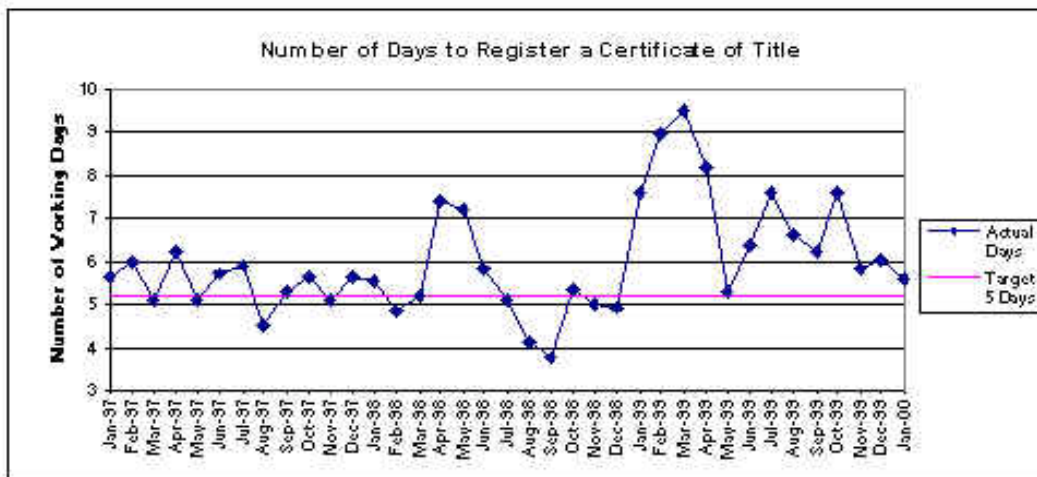
DISCLAIMER: The Department of Land Administration accepts no responsibility or any liability or obligation for the accuracy of the information and comments contained herein or for the consequences of any actions persons may take on the basis of information or comments contained herein.

Return to [Contents](#)

Documents Lodged Average Daily Document Lodgements



Registration Time Achievement Against 1999/2000 Targets



Monthly Transfer Lodgements January 2000

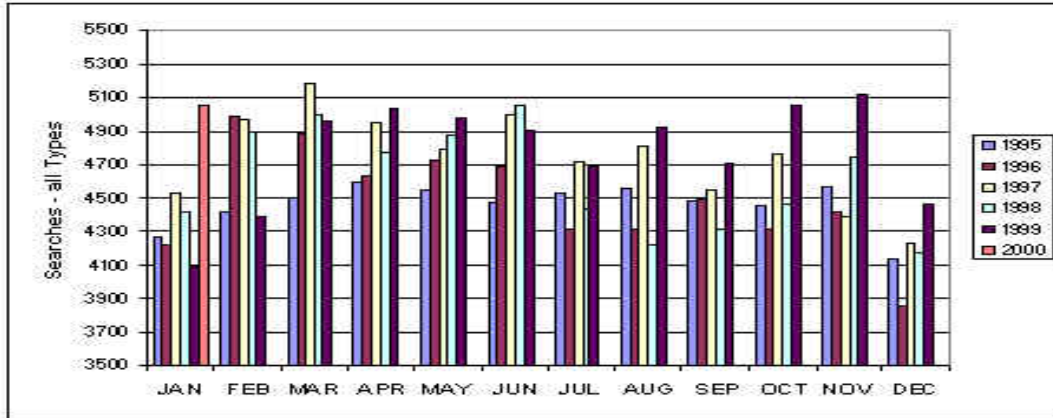
CONSIDERATION \$	NUMBER LODGED
0 - 85,000	1932
85,001 - 120,000	1001
120,001 - 200,000	1746
200,001 - 300,000	833
300,001 - 400,000	308
400,001 - 500,000	121
500,001 - 600,000	58
600,001 - 700,000	35
700,001 - 800,000	12
800,001 - 900,000	16
900,001 - 1,000,000	14
1,000,001 - 2,000,000	41
2,100,001 - 2,600,000	8
3,400,001 - 3,800,000	2
4,300,001 - 5,000,000	2
6,100,001 - 6,300,000	2
19,000,001 - 20,000,000	1
TOTAL	6132

Overview of Categories of Document Lodgements 1999/2000

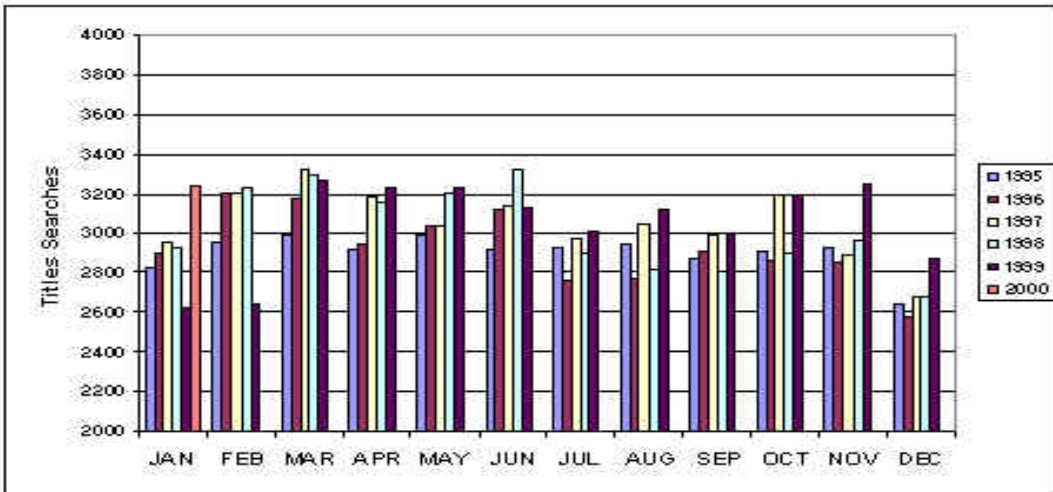
MONTH 1999/2000	TRANSFERS		MORTGAGES							DOC'S			
	NO	CONSIDERATION \$	NO	PRINCIPAL \$	DISCH	APPLIC	W/CAV	CAV	LEASE	P/A	MISC	SUND	LODGED
JULY													
Totals	6,923	1,164,556,767	8,066	1,829,964,849	7,097	2,073	780	785	85	507	657	489	27,462
AUGUST													
Totals	7,360	1,408,382,097	8,150	1,862,360,659	7,104	2,020	859	826	102	464	693	494	28,072
SEPTEMBER													
Total	7,169	1,113,591,926	7,813	1,598,281,229	6,837	1,970	830	873	116	420	659	356	27,043
OCTOBER													
Totals	7,266	1,316,802,022	8,119	1,721,723,793	7,033	2,052	771	761	70	418	674	478	27,642
NOVEMBER													
Totals	7,933	1,353,460,780	8,869	2,433,270,863	7,664	2,444	828	783	104	487	649	603	30,364
DECEMBER													
Totals	8,193	1,420,575,229	9,235	2,096,214,907	7,877	2,060	853	701	70	411	662	549	30,611
JANUARY													
Totals	6,132	1,041,471,681	6,978	1,657,215,225	5,876	1,838	668	651	81	391	656	734	24,005
TOTALS	50,976	8,818,840,502	57,230	13,199,031,525	49,488	14,457	5,589	5,380	628	3,098	4,650	3,703	195,199

Return to [Contents](#)

Searches Performed Average Daily Searches – All Types

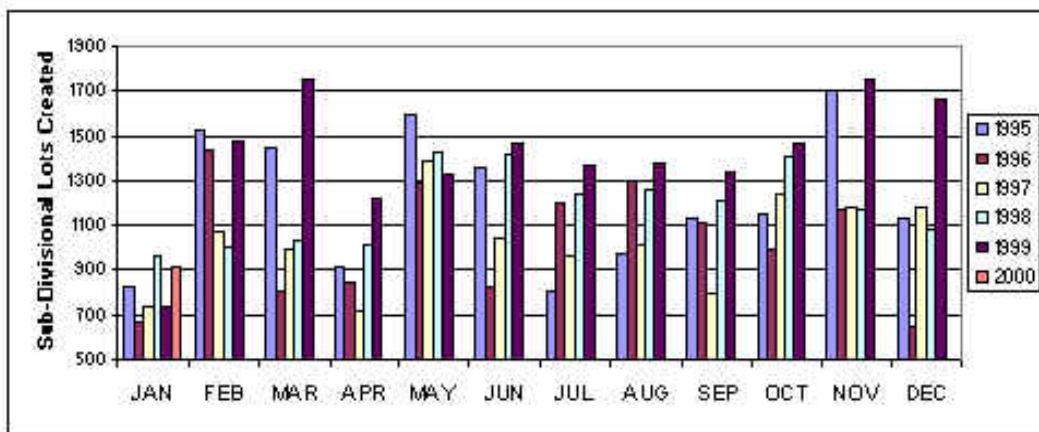


Average Daily Title Searches



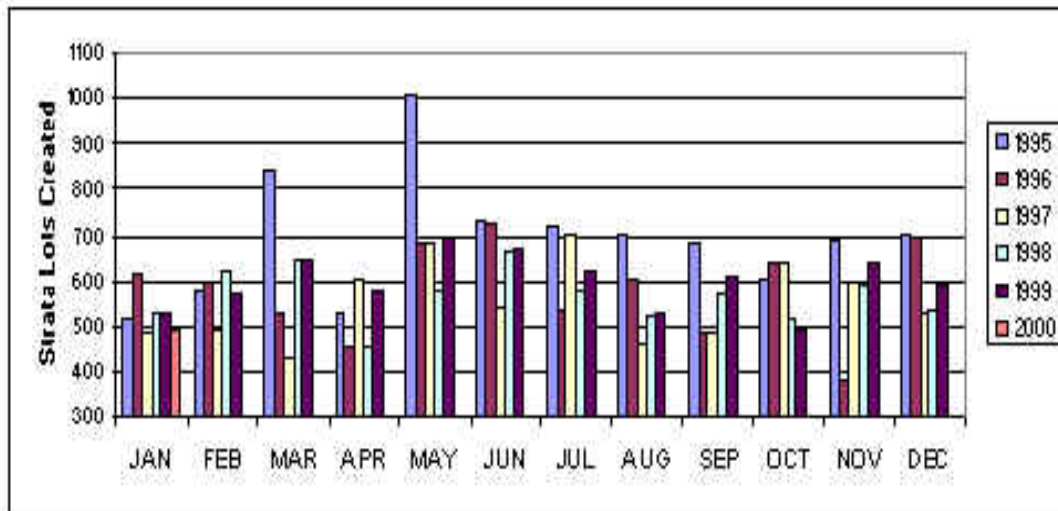
[Return to Contents](#)

Plans and Diagrams Lodged Monthly Total of Sub-Divisional Lots Created



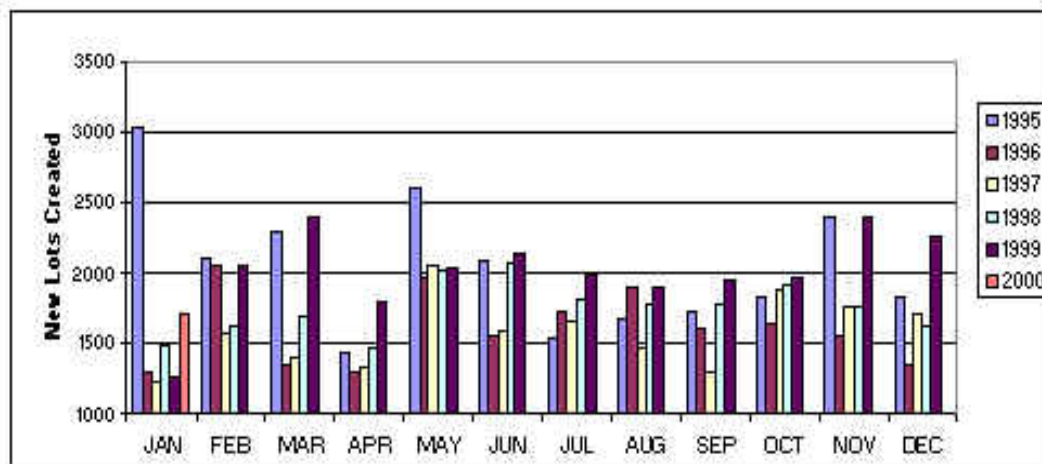
FINANCIAL YEARS	1993/94	1994/95	1995/96	1996/97	1997/98	1998/99
NUMBER OF LOTS	19774	20037	12792	12361	13238	15364

Monthly Total of Strata Lots Created



FINANCIAL YEARS	1993/94	1994/95	1995/96	1996/97	1997/98	1998/99
NUMBER OF LOTS	8342	8992	7690	6569	6893	6995

Monthly Total of New Lots Created



FINANCIAL YEARS	1993/94	1994/95	1995/96	1996/97	1997/98	1998/99
NUMBER OF LOTS	28117	30718	20482	18530	20131	22359

[Return to Contents](#)

DOLA Government Land Overview

LAND SALES

DATE SOLD	TOWN/DISTRICT	LOT/LOCATION	PURPOSE	AREA (HA)	PRICE \$
05/01/00	WATHEROO	100	RURAL RESIDENTIAL	0.3035	500.00
07/01/00	KALBARRI	841	LIGHT INDUSTRIAL	0.1947	18,460.00
11/01/00	KARRATHA	3886	LIGHT INDUSTRIAL	1.0419	40,500.00
11/01/00	KARRATHA	2526	LIGHT INDUSTRIAL	1.0639	26,000.00
12/01/00	JURIEN	989	RESIDENTIAL	0.1065	48,000.00
13/01/00	WILLIAMS	13920	AGRICULTURE	986.2229	12,923.00
18/01/00	DAMPIER	345	RURAL RESIDENTIAL	1.9292	65,000.00
21/01/00	JURIEN	1201	LIGHT INDUSTRIAL	0.2000	36,500.00
21/01/00	ROE	2236	RESIDENTIAL	0.1012	350.00
21/01/00	VARLEY	60	RESIDENTIAL	0.1012	2,000.00
24/01/00	LAKE KING	170	RESIDENTIAL	0.1193	3,400.00
25/01/00	GIBSON	46	LIGHT INDUSTRIAL	0.2403	1,500.00
31/01/00	LEDGE POINT	715	RESIDENTIAL	0.0788	43,000.00
Total					298,133.00

LAND UNDER OFFER

TOWN/DISTRICT	NO OF LOTS	PURPOSE
CARNARVON	1	LIGHT INDUSTRIAL
HALLS CREEK	1	RESIDENTIAL
PT DENISON	1	RESIDENTIAL

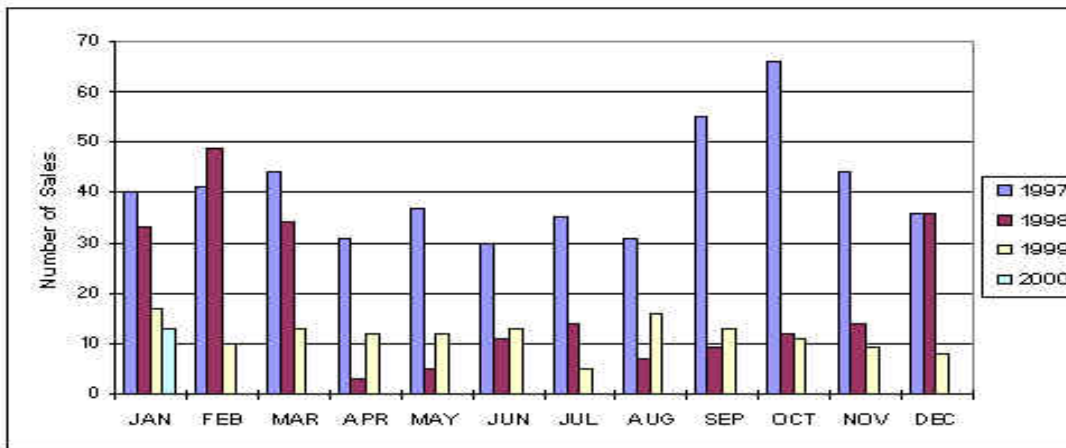
FORTHCOMING AUCTIONS

TOWN	LOT OFFERED	DATE OF AUCTION
DUNCRAIG	1	FEBRUARY 2000

LAND AUCTIONS

TOWN	LOTS OFFERED	LOTS SOLD	TOTAL RESERVE PRICE \$	PRICE REALISED \$
NIL	-	-	-	-

Government Land Sales - January 2000



* Note: Digital copies of these statistics began during the 1996/97 financial year.

[Return to Contents](#)