

June 2000

CONTENTS

- Overview of Business Activity**
- Documents Lodged**
- Searches Performed**
- Plans and Diagrams Lodged**
- DOLA Government Land Overview**

Business Activity Highlights

THE FINANCIAL YEAR IN REVIEW

- The impact of the GST saw 13475 documents lodged during the last week of the financial year.
- On the last day of the financial year, 5377 documents were lodged, the highest lodgement figure known to occur in one day.
- During the 1999/2000 financial year, land transfers for 89754 properties were registered, with a value of \$16.2 billion. This was a 7.5% increase on 1998/1999 (83487) at a value of \$14 billion.
- The value of mortgages lodged in the financial year was \$24.77 billion, a 17.96 % increase from 1998/99 (\$21 billion).
- A total of 24201 new lots were created increased by 8.2% from 1998/99 (22359).

Document Registration Lodgements

Documents are lodged at the Service Delivery Division to register land transactions. "Documents" include Transfers, Mortgages, and Discharge of Mortgages.

The average daily document lodgement for June 2000 was 1720 documents per day, an increase of 34.7% from May (1277) and an increase of 16.9% when compared to the June 1999 figure of 1471. It also represented the highest figure recorded for any one month. Previously, the highest figure recorded was in March 1994 (1649).

The number of transfers lodged for June totalled 10016. This figure represented a 33.1% increase from the previous month (7525) and was 24.1% higher than June 1999. It was also the highest number of transfers lodged since March 1994 (10 132).

The total number of transfers lodged for the financial year was 89754, a 7.5% increase over the previous financial year (83 487).

There were 2848 transfer documents lodged in the \$0 - \$85,000 consideration price range, and 2856 transfers lodged in the \$120,001 - \$200,000 range. The total transfer consideration for the month was \$2 billion.

The number of mortgages lodged for June totalled 9901 and amounted to \$2.7 billion.

Land Title Searches

"Searching" is a conveyancing term and is, essentially, obtaining a copy of a statutory document (Certificate of Title, Survey, etc.) held by the Service Delivery Division.

Average daily searches (all types) for June 2000 was 5091. The figure was a 2.6% increase from the previous month (4961).

Daily title searches averaged 3134 which was similar to May (3148) and marginally higher than June 1999 (3128).

Creation of New Lots

New lots created are defined as new lots created by subdivisional plan or diagram or by strata plan. The statistics for new lots created is a gross figure, in that existing lots that are extinguished are not subtracted.

There were 54 plans and 346 diagrams lodged in June 2000 creating 1469 subdivisional lots, a decrease of 1.9% from May (1498) but similar to June 1999 (1468).

During June, 243 strata plans were lodged, creating 1003 strata lots, a decrease of 7.7% from the previous month (1087) and a 49.9% increase over June 1999 (669). Strata lodgements remained high, due to the influence of the GST.

A total of 2472 new lots were created during June, a decrease of 4.4% from the previous month (2585) and 15.7% above the June 1999 figure of 2137.

The total of new lots created during the 1999/2000 financial year (24201) remained the highest since 1994/95 (30718).

Performance Indicators

Number of Days to Register a Transaction Against a Certificate of Title - 75% of Documents within 5.2 Days.

During June 2000, the number of days to register a transaction against a Certificate of Title was 7.5 days, a considerable increase over the previous month's Performance Indicator of 5.9 days. The increased Performance Indicator was attributed to extremely high document lodgements for the latter part of the financial year, again due to the introduction of GST. It is expected that the level of this Performance Indicator will be substantially reduced over the coming months.

Number of Days to Register a Certificate of Title for Large Subdivisions - 5 Days.

June recorded an average of 4 days to register a Certificate of Title over large subdivisions. This was a decrease from the average of 4.6 days during the previous month, and below the required Performance Indicator of 5 days. The yearly average Performance Indicator of 5 days was achieved for the 1999/2000 year.

Graphs indicating progress on Performance Indicators appear under the Documents Lodged section of this report.

**GRAHAME SEARLE
DIRECTOR
SERVICE DELIVERY**

9 July 2000

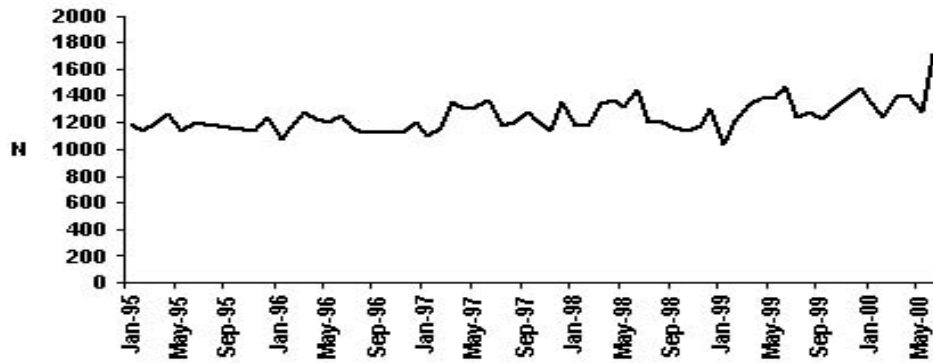
FOR YOUR ATTENTION

For further information please contact the Executive Assistant, Fran Dastlik on (08) 9273 7306.

DISCLAIMER: The Department of Land Administration accepts no responsibility or any liability or obligation for the accuracy of the information and comments contained herein or for the consequences of any actions persons may take on the basis of information or comments contained herein.

Return to [Contents](#)

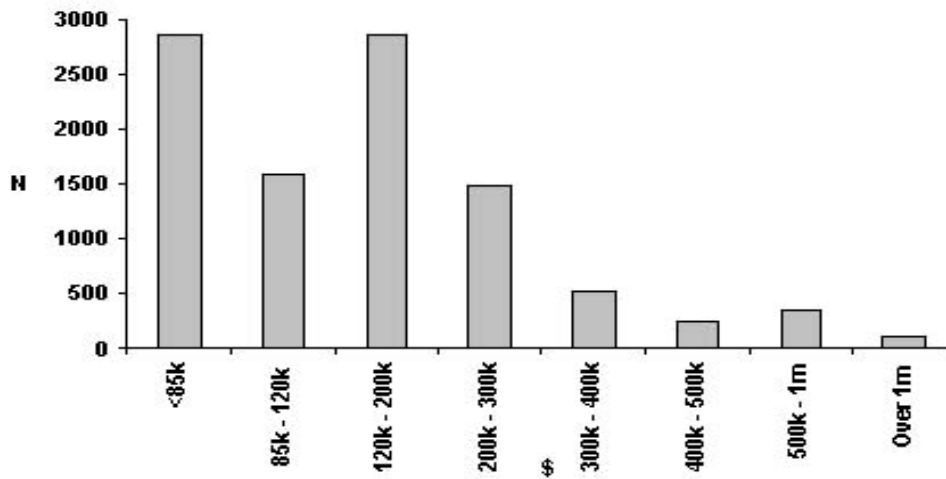
Documents Lodged
Average Daily
Document Lodgements



Registration Time
Achievement Against 1999/2000 Targets



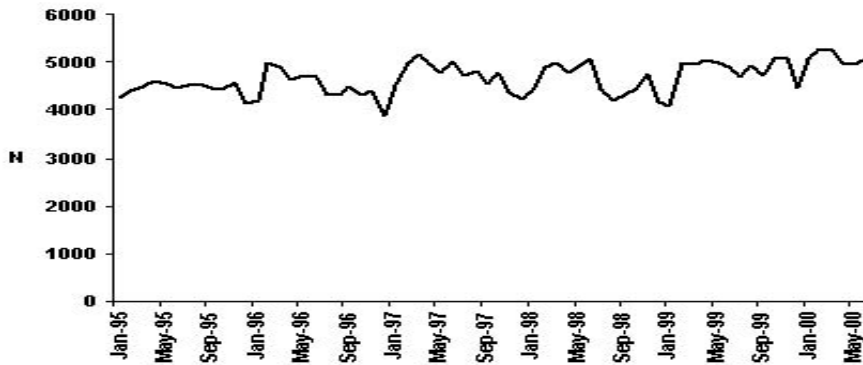
Monthly Transfer Lodgements June 2000



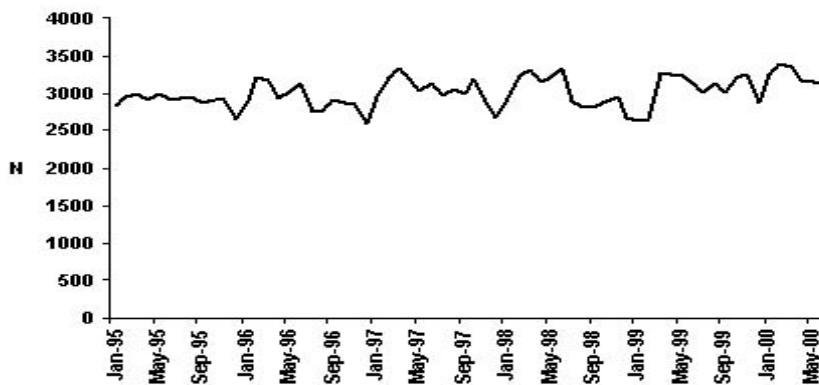
MONTH 1999/2000	TRANSFERS			MORTGAGES					DOCS				
	NO	CONSIDERATION	NO	PRINCIPAL	DISCH	APPLIC	W/CAV	CAV	LEASE	P/A	MISC	SUND	LODGED
JULY		\$		\$									
Totals	6,923	1,164,556,767	8,066	1,829,964,849	7,097	2,073	780	785	85	507	657	489	27,462
AUGUST													
Totals	7,360	1,408,382,097	8,150	1,862,360,659	7,104	2,020	859	826	102	464	693	494	28,072
SEPTEMBER													
Total	7,169	1,113,591,926	7,813	1,598,281,229	6,837	1,970	830	873	116	420	659	356	27,043
OCTOBER													
Totals	7,266	1,316,802,022	8,119	1,721,723,793	7,033	2,052	771	761	70	418	674	478	27,642
NOVEMBER													
Totals	7,933	1,353,460,780	8,869	2,433,270,863	7,664	2,444	828	783	104	487	649	603	30,364
DECEMBER													
Totals	8,193	1,420,575,229	9,235	2,096,214,907	7,877	2,060	853	701	70	411	662	549	30,611
JANUARY													
Totals	6,132	1,041,471,681	6,978	1,657,215,225	5,876	1,838	668	651	81	391	656	734	24,005
FEBRUARY													
Totals	6,668	1,223,750,182	7,353	1,632,260,259	6,500	2,070	775	724	87	517	688	589	25,971
MARCH													
Totals	8,138	1,476,293,318	8,832	2,597,548,342	7,863	2,306	847	690	74	453	682	605	30,490
APRIL													
Totals	6,431	1,140,306,020	6,826	1,976,478,171	6,057	1,682	602	683	52	435	520	515	23,803
MAY													
Totals	7,525	1,386,215,553	8,302	2,662,017,749	7,527	2,226	818	798	102	551	877	656	29,382
JUNE													
Totals	10,016	2,064,343,741	9,901	2,700,340,808	9,268	2,898	990	857	176	566	906	550	36,128
TOTALS	89,754	16,109,749,316	98,444	24,767,676,854	86,703	25,639	9,621	9,132	1,119	5,620	8,323	6,618	340,973

[Return to Contents](#)

Searches Performed Average Daily Searches – All Types

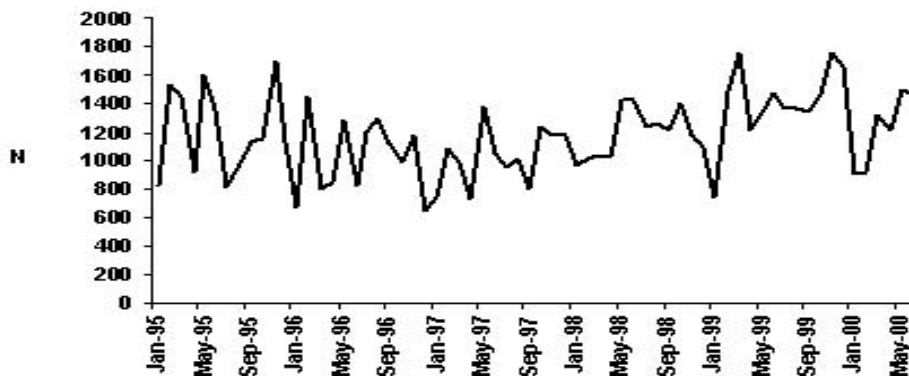


Average Daily Title Searches



[Return to Contents](#)

Plans and Diagrams Lodged Monthly Total of Sub-Divisional Lots Created



FINANCIAL YEARS	1993/94	1994/95	1995/96	1996/97	1997/98	1998/99	1999/00
NUMBER OF LOTS	19774	20037	12792	12361	13238	15364	16304

Monthly Total of Strata Lots Created



Monthly Total of New Lots Created



[Return to Contents](#)

DOLA Government Land Overview

LAND SALES

DATE SOLD	TOWN/ DISTRICT	LOT/ LOCATION	PURPOSE	AREA (HA)	PRICE \$
01/06/00	RAVENSTHORPE	120	COMMERCIAL	0.1012	6,000.00
07/06/00	SWAN	13354	COMMERCIAL	0.1203	360,000.00
13/06/00	SWAN	12241	LIGHT INDUSTRIAL	0.3523	140,000.00
15/06/00	LEONORA	1105	LIGHT INDUSTRIAL	0.5317	24,000.00
20/06/00	CARNARVON	1256	LIGHT INDUSTRIAL	0.2100	12,000.00
21/06/00	GASCOYNE JUNCTION	18	RESIDENTIAL	0.1012	2,000.00
21/06/00	LAVERTON	520	RESIDENTIAL	0.0753	14,800.00
23/06/00	DENHAM	323	LIGHT INDUSTRIAL	0.2250	37,100.00
23/06/00	ROE	2300	CONDITIONAL PURCHASE	1377.7194	4,877.00
23/06/00	ROEBOURNE	784	RESIDENTIAL	0.2023	3,500.00
28/06/00	MAUDS LANDING	46	TOURIST ACCOMODATION	6.8126	470,000.00
	TOTAL				1,074,277.00

LAND UNDER OFFER

TOWN/DISTRICT	NO OF LOTS	PURPOSE
DUMBERNING	1	LIGHT INDUSTRIAL
EXMOUTH	1	RURAL/RESIDENTIAL & DEPOT
FITZROY CROSSING	2	RESIDENTIAL
JURIEN	1	RESIDENTIAL
KARRATHA	2	RESIDENTIAL
KULIN	1	LIGHT INDUSTRIAL
MARGARET RIVER	1	LIGHT INDUSTRIAL

FORTHCOMING AUCTIONS

TOWN	LOT OFFERED	DATE OF AUCTION
NONE SCHEDULED		

LAND AUCTIONS

TOWN	LOTS OFFERED	LOTS SOLD	TOTAL RESERVE PRICE \$	PRICE REALISED \$
NONE SCHEDULED	-	-	-	-

Government Land Sales – June 2000



** Note: Digital copies of these statistics began during the 1996/97 financial year.*

Return to [Contents](#)