

# business

# activity

## Business Activity Profile January 2002

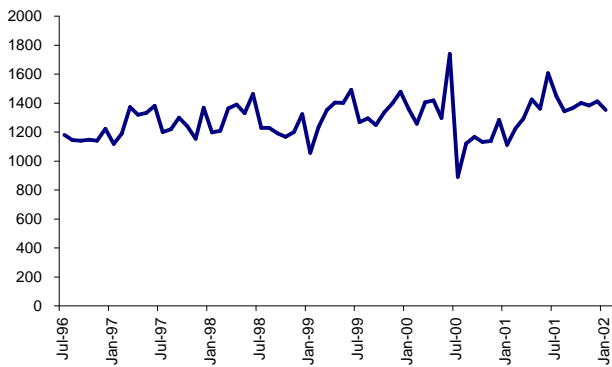
### RECORD LEVELS REMAIN FOR THE START OF THE NEW YEAR

During January 2002, most business levels remain substantially above those at the same time last year, despite some large reductions in activity from the previous month. Average daily document lodgements (1,332) fell slightly from December 2001 (1,392) but remained 22 per cent more than January 2001 (1,092). There were 7,524 transfer documents lodged, a drop of over 9 per cent from last month (8,309). It was, however, nearly 34 per cent more than January 2001 (5,622) and the highest January figure for more than eight years. Average daily searches (5,399) rose by 19 per cent from both the previous month (4,536) and January 2001 (4,549). It was the highest January figure in excess of seven years. The number of subdivisional lots created this month (841) showed a marked decrease of nearly 40 per cent from December (1,397) however, it was over 24 per cent higher than January 2001 (677). The number of strata title lots created (498) fell by over 24 per cent from last month (658) and over 12 per cent from January 2001 (567).

Lists of all statistics commence at page 6 of this publication.

Business Activity Profiles  
online every month at  
[www.dola.wa.gov.au](http://www.dola.wa.gov.au)

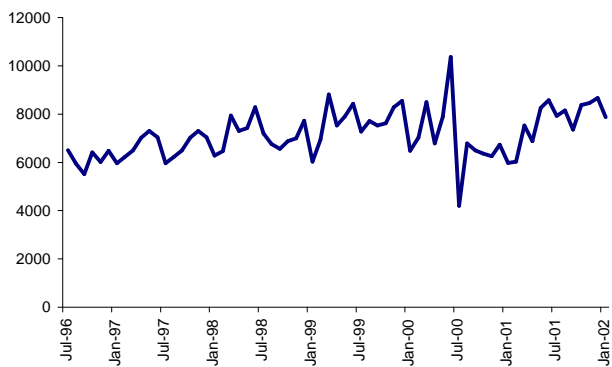
## DOLA BUSINESS ACTIVITY



### Average daily document lodgements:

These include Transfers, Mortgages, and Discharge of Mortgages

The average daily document lodgement for January was 1,332 documents per day, a decrease of 4.3% from the previous month (1,392). However, it was a 22% increase from January 2001 (1,092).

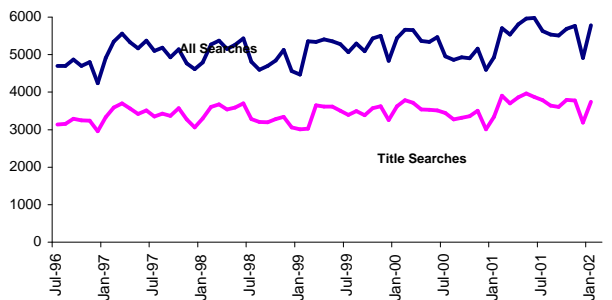


### Monthly transfer lodgements

Refer to table at page 5 of this report

The number of transfer documents lodged for January totalled 7,524. This was a 9.5% decrease from the previous month (8,309) but remained 33.8% above January 2001 (5,622) and was the highest January figure for more than eight years. The majority of transfer documents lodged (2,214) were in the \$120,001 - \$200,000 consideration price range, followed by 2,071 in the range of \$0 - \$85,000. The total transfer consideration for the month was \$1.52 billion.

The number of mortgages lodged for January totalled 8,179 and amounted to \$1.87 billion.

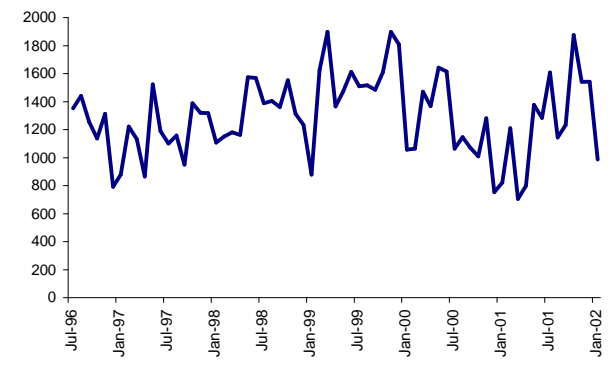


### Average daily searches

Finding and obtaining a copy of a statutory document (Certificate of Title, Survey, etc)

Average daily searches (all types) for January (5,399) increased by 19% from the previous month (4,536) and 18.7% from January 2001 (4,549). It was the highest January figure for in excess of seven years.

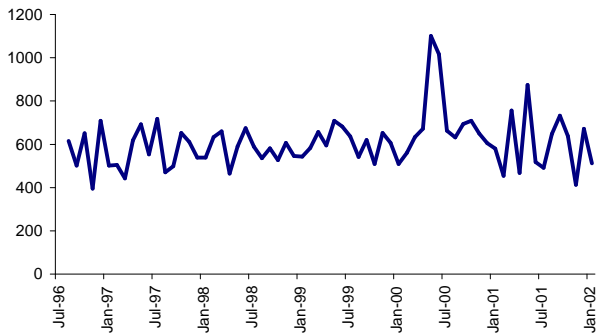
The average daily title search (3,362) represented an increase of 19.7% from the previous month (2,809). It was also 13.5% higher than January 2001 (2,962) and the highest figure for that month for in excess of seven years.



### Number of subdivision lots

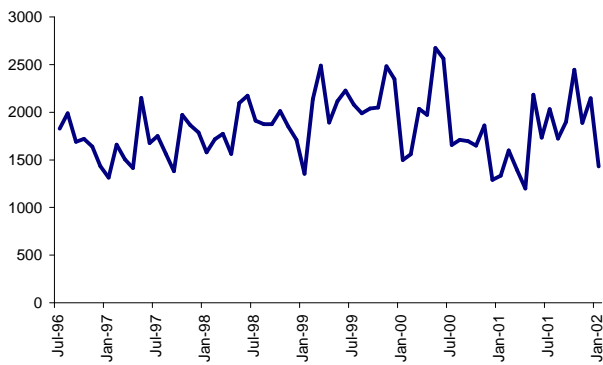
The title 'Freehold Survey Deposited Plans' has replaced the previous wording of 'plans and diagrams'.

There were 163 Freehold Survey Deposited Plans lodged during January creating 841 subdivisional lots, down 39.8% on December (1,397). However, it remained 24.2% greater than January 2001 (677).



#### Number of strata title lots

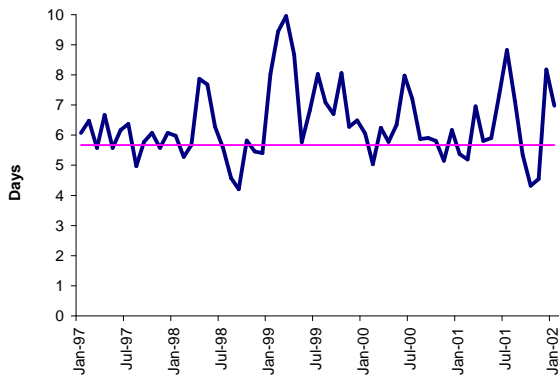
During January, 123 strata plans were lodged, creating 498 strata lots. This was a decrease of 24.3% from the previous month (658) and 12.2% from January 2001 (567).



#### Number of new lots

New lots created by Freehold Survey Deposited Plans or by Strata Plan. Includes existing lots that are extinguished but not subtracted.

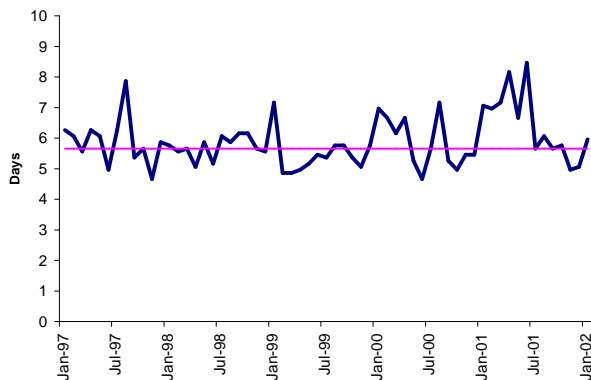
A total of 1,339 new lots were created during January which was a decrease of 34.8% from the previous month (2,055). However, it showed an increase of 7.6% from January 2001 (1,244).



#### Time to register a transaction against a certificate of title

Target of 75% of Documents within 5.2 Days

During January, the number of days to register a transaction against a Certificate of Title averaged 6.5 days, a reduction from the previous month of 7.7 days. The year-to-date Performance Indicator was 5.99 days.



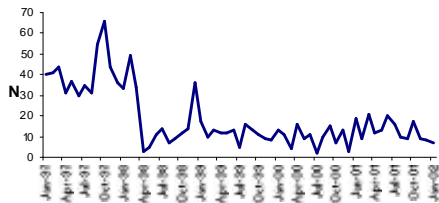
#### Time to register a certificate of title for large subdivisions

Target of 5 days

January recorded an average of 5.3 days to register a Certificate of Title over large subdivisions, which was slightly over the required Performance Indicator of 5 days.

## DOLA Government land overview January 2002

The land sales information provided below relates to DOLA's sales in country locations. Details of re-released lots are available from DOLA's website, with the details available for all lots later this year.



(NB: Digital copies begun in 1997)

Customers can obtain details of lots for sale by contacting the regional teams below

Kimberley	9168 0255
South East	9273 7419
Pilbara	9273 7234
South West	9791 0834
Midwest	9273 7290

### LAND SALES

DATE SOLD	TOWN/DISTRICT	LOT/ LOCATION	PURPOSE	AREA (HA)	PRICE \$
03/01/02	PORT HEDLAND	972	LIGHT INDUSTRIAL	0.7751	19,500.00
15/01/02	KWINANA	487	SCHOOL	4.0000	215,000.00
16/01/02	SWAN	8055	RESIDENTIAL	0.1003	125,000.00
22/01/02	JURIEN	1199	LIGHT INDUSTRIAL	0.2000	36,500.00
22/01/02	JURIEN	1200	LIGHT INDUSTRIAL	0.2000	36,500.00
25/01/02	PINGELLY	846	RESIDENTIAL	0.2092	7,000.00
29/01/02	SWAN	6910	RESIDENTIAL	0.0840	155,000.00
					594,500.00

### LAND UNDER OFFER

TOWN/DISTRICT	NO OF LOTS	PURPOSE
JURIEN	3	LIGHT INDUSTRIAL

### LAND AUCTIONS

TOWNS	LOTS OFFERED	LOTS SOLD	TOTAL RESERVE PRICE \$	PRICE REALISED \$
NIL	-	-	-	-

### FORTHCOMING AUCTIONS

TOWNS	LOT OFFERED	DATE OF AUCTION
NIL	-	-

## Categories of document lodgements 2001/2002

MONTH 2001/2002	NO	TRANSFERS CONSIDERATION	NO	MORTGAGES PRINCIPAL	DISCH	APPLIC	W/CAV	CAV	LEASE	P/A	MISC	SUND	DOCUMENTS LODGED
<b>JULY</b>		\$		\$									
Totals	7,573	1,362,631,428	8,730	2,171,956,328	7,693	2,302	813	697	88	588	190	1,306	29,980
<b>AUGUST</b>													
Totals	7,801	1,561,712,208	8,828	3,000,087,076	7,746	1,937	741	674	180	578	651	1,286	30,422
<b>SEPTEMBER</b>													
Totals	7,006	1,282,520,585	7,682	1,948,721,990	6,877	1,645	680	568	90	511	611	1,235	26,905
<b>OCTOBER</b>													
Totals	8,027	2,507,002,863	8,833	2,094,483,751	7,665	1,801	683	643	117	537	668	1,422	30,396
<b>NOVEMBER</b>													
Total	8,106	2,309,294,669	8,602	2,406,624,315	7,739	1,815	750	612	59	541	681	1,080	29,985
<b>DECEMBER</b>													
Totals	8,309	1,925,232,925	8,529	2,266,261,024	7,509	1,616	603	582	82	471	604	937	29,242
<b>JANUARY</b>													
Totals	7,524	1,524,921,949	8,179	1,866,719,391	7,290	1,677	608	616	42	499	514	1,013	27,962
<b>TOTALS</b>	54,346	12,473,316,627	59,383	15,754,853,875	52,519	12,793	4,878	4,392	658	3,725	3,919	8,279	204,892



For further information please contact Fran Dastlik on (08) 9273 7306

**DISCLAIMER:** The Department of Land Administration accepts no responsibility or any liability or obligation for the accuracy of the information and comments contained herein or for the consequences of any actions persons may take on the basis of information or comments contained herein.

## ITEM 1

## AVERAGE DAILY DOCUMENT LODGEMENTS

Month	N
Jul-95	1198
Aug-95	1179
Sep-95	1170
Oct-95	1155
Nov-95	1149
Dec-95	1246
Jan-96	1069
Feb-96	1166
Mar-96	1280
Apr-96	1233
May-96	1210
Jun-96	1250
Jul-96	1161
Aug-96	1124
Sep-96	1121
Oct-96	1128
Nov-96	1120
Dec-96	1202
Jan-97	1098
Feb-97	1169
Mar-97	1353
Apr-97	1300
May-97	1313
Jun-97	1362
Jul-97	1180
Aug-97	1201
Sep-97	1279
Oct-97	1219
Nov-97	1133
Dec-97	1349
Jan-98	1177
Feb-98	1188
Mar-98	1343
Apr-98	1371
May-98	1311
Jun-98	1444
Jul-98	1208
Aug-98	1209
Sep-98	1171
Oct-98	1146
Nov-98	1181
Dec-98	1303
Jan-99	1037
Feb-99	1216
Mar-99	1333
Apr-99	1383
May-99	1381
Jun-99	1471
Jul-99	1248
Aug-99	1276
Sep-99	1229
Oct-99	1316
Nov-99	1380
Dec-99	1458
Jan-00	1337
Feb-00	1237
Mar-00	1386
Apr-00	1400
May-00	1277
Jun-00	1720
Jul-00	870
Aug-00	1101
Sep-00	1148
Oct-00	1111
Nov-00	1118
Dec-00	1263
Jan-01	1092
Feb-01	1205
Mar-01	1273

Apr-01	1406
May-01	1341
Jun-01	1586
Jul-01	1428
Aug-01	1,323
Sep-01	1,345
Oct-01	1,382
Nov-01	1,363
Dec-01	1,392
Jan-02	1,332

ITEM 2

**Monthly Transfer Lodgements**

Jul-95	6257
Aug-95	6477
Sep-95	6028
Oct-95	5944
Nov-95	6156
Dec-95	6034
Jan-96	5411
Feb-96	6121
Mar-96	6560
Apr-96	6244
May-96	6560
Jun-96	5766
Jul-96	6154
Aug-96	5589
Sep-96	5154
Oct-96	6054
Nov-96	5665
Dec-96	6128
Jan-97	5608
Feb-97	5871
Mar-97	6138
Apr-97	6663
May-97	6954
Jun-97	6684
Jul-97	5608
Aug-97	5871
Sep-97	6138
Oct-97	6663
Nov-97	6954
Dec-97	6684
Jan-98	5928
Feb-98	6110
Mar-98	7579
Apr-98	6947
May-98	7069
Jun-98	7926
Jul-98	6839
Aug-98	6403
Sep-98	6199
Oct-98	6524
Nov-98	6643
Dec-98	7372
Jan-99	5678
Feb-99	6585
Mar-99	8454
Apr-99	7176
May-99	7543
Jun-99	8071
Jul-99	6923
Aug-99	7360
Sep-99	7169
Oct-99	7266

Nov-99	7933
Dec-99	8193
Jan-00	6132
Feb-00	6668
Mar-00	8138
Apr-00	6431
May-00	7525
Jun-00	10016
Jul-00	3840
Aug-00	6434
Sep-00	6140
Oct-00	6008
Nov-00	5905
Dec-00	6377
Jan-01	5622
Feb-01	5677
Mar-01	7174
Apr-01	6518
May-01	7897
Jun-01	8215
Jul-01	7573
Aug-01	7801
Sep-01	7006
Oct-01	8027
Nov-01	8106
Dec-01	8309
Jan-02	7524

ITEM 3

Month	AVERAGE	
	DAILY SEARCHES	ALL TITLES
	N	N
Jul-95	4528	2923
Aug-95	4558	2947
Sep-95	4474	2874
Oct-95	4450	2906
Nov-95	4565	2922
Dec-95	4144	2646
Jan-96	4218	2900
Feb-96	4987	3205
Mar-96	4885	3169
Apr-96	4630	2941
May-96	4729	3038
Jun-96	4691	3119
Jul-96	4317	2759
Aug-96	4318	2770
Sep-96	4486	2912
Oct-96	4317	2868
Nov-96	4419	2855
Dec-96	3858	2580
Jan-97	4533	2953
Feb-97	4968	3209
Mar-97	5177	3320
Apr-97	4952	3184
May-97	4787	3037
Jun-97	4995	3132
Jul-97	4722	2972
Aug-97	4805	3051
Sep-97	4545	2988
Oct-97	4766	3194
Nov-97	4388	2895
Dec-97	4231	2684
Jan-98	4413	2923
Feb-98	4892	3228

<b>Mar-98</b>	4989	3296
<b>Apr-98</b>	4773	3155
<b>May-98</b>	4879	3205
<b>Jun-98</b>	5051	3323
<b>Jul-98</b>	4431	2898
<b>Aug-98</b>	4219	2821
<b>Sep-98</b>	4318	2813
<b>Oct-98</b>	4462	2900
<b>Nov-98</b>	4742	2958
<b>Dec-98</b>	4178	2683
<b>Jan-99</b>	4085	2629
<b>Feb-99</b>	4975	2647
<b>Mar-99</b>	4960	3265
<b>Apr-99</b>	5028	3234
<b>May-99</b>	4975	3232
<b>Jun-99</b>	4902	3128
<b>Jul-99</b>	4685	3009
<b>Aug-99</b>	4919	3118
<b>Sep-99</b>	4708	3005
<b>Oct-99</b>	5055	3195
<b>Nov-99</b>	5118	3247
<b>Dec-99</b>	4458	2875
<b>Jan-00</b>	5058	3244
<b>Feb-00</b>	5284	3405
<b>Mar-00</b>	5274	3336
<b>Apr-00</b>	4981	3156
<b>May-00</b>	4961	3148
<b>Jun-00</b>	5091	3134
<b>Jul-00</b>	4574	3061
<b>Aug-00</b>	4484	2895
<b>Sep-00</b>	4553	2938
<b>Oct-00</b>	4527	2975
<b>Nov-00</b>	4777	3121
<b>Dec-00</b>	4217	2630
<b>Jan-01</b>	4549	2962
<b>Feb-01</b>	5325	3523
<b>Mar-01</b>	5153	3318
<b>Apr-01</b>	5425	3483
<b>May-01</b>	5586	3581
<b>Jun-01</b>	5596	3494
<b>Jul-01</b>	5249	3402
<b>Aug-01</b>	5153	3263
<b>Sep-01</b>	5126	3227
<b>Oct-01</b>	5307	3411
<b>Nov-01</b>	5387	3396
<b>Dec-01</b>	4536	2809
<b>Jan-02</b>	5399	3362

**MONTHLY TOTAL  
OF SUB-DIVISIONAL LOTS CREATED**

Month	
Jul-95	811
Aug-95	973
Sep-95	1127
Oct-95	1151
Nov-95	1704
Dec-95	1128
Jan-96	672
Feb-96	1443
Mar-96	808
Apr-96	850
May-96	1292
Jun-96	833
Jul-96	1206
Aug-96	1295
Sep-96	1110
Oct-96	993
Nov-96	1168
Dec-96	647
Jan-97	734
Feb-97	1077
Mar-97	987
Apr-97	720
May-97	1379
Jun-97	1045
Jul-97	956
Aug-97	1013
Sep-97	805
Oct-97	1243
Nov-97	1175
Dec-97	1172
Jan-98	963
Feb-98	1006
Mar-98	1036
Apr-98	1018
May-98	1428
Jun-98	1423
Jul-98	1244
Aug-98	1260
Sep-98	1217
Oct-98	1407
Nov-98	1167
Dec-98	1087
Jan-99	733
Feb-99	1478
Mar-99	1754
Apr-99	1220
May-99	1329
Jun-99	1468
Jul-99	1365
Aug-99	1371
Sep-99	1340
Oct-99	1465
Nov-99	1754
Dec-99	1663
Jan-00	911
Feb-00	920
Mar-00	1325
Apr-00	1223
May-00	1498
Jun-00	1469
Jul-00	918
Aug-00	1001
Sep-00	925
Oct-00	865
Nov-00	1136
Dec-00	609
Jan-01	677
Feb-01	1066
Mar-01	561
Apr-01	654
May-01	1233

Jun-01	1139
Jul-01	1463
Aug-01	999
Sep-01	1087
Oct-01	1731
Nov-01	1397
Dec-01	1397
Jan-02	841

ITEM 5

**MONTHLY TOTAL  
OF STRATA LOTS CREATED**

Month	
Jul-95	721
Aug-95	705
Sep-95	678
Oct-95	603
Nov-95	684
Dec-95	703
Jan-96	617
Feb-96	595
Mar-96	527
Apr-96	452
May-96	677
Jun-96	728
Jul-96	531
Aug-96	602
Sep-96	488
Oct-96	638
Nov-96	382
Dec-96	696
Jan-97	488
Feb-97	491
Mar-97	429
Apr-97	605
May-97	679
Jun-97	540
Jul-97	705
Aug-97	457
Sep-97	486
Oct-97	639
Nov-97	598
Dec-97	525
Jan-98	526
Feb-98	620
Mar-98	647
Apr-98	452
May-98	577
Jun-98	661
Jul-98	576
Aug-98	523
Sep-98	568
Oct-98	514
Nov-98	593
Dec-98	532
Jan-99	530
Feb-99	569
Mar-99	643
Apr-99	582
May-99	696
Jun-99	669
Jul-99	623
Aug-99	528
Sep-99	607
Oct-99	495
Nov-99	639
Dec-99	594
Jan-00	495
Feb-00	548
Mar-00	620
Apr-00	658
May-00	1087
Jun-00	1003
Jul-00	649
Aug-00	619

Sep-00	680
Oct-00	695
Nov-00	636
Dec-00	592
Jan-01	567
Feb-01	441
Mar-01	743
Apr-01	454
May-01	861
Jun-01	504
Jul-01	478
Aug-01	635
Sep-01	719
Oct-01	625
Nov-01	399
Dec-01	658
Jan-02	498

ITEM 6

**MONTHLY TOTAL  
OF NEW LOTS CREATED**

Month	1995
Jul-95	1532
Aug-95	1678
Sep-95	1730
Oct-95	1829
Nov-95	2388
Dec-95	1831
Jan-96	1289
Feb-96	2038
Mar-96	1335
Apr-96	1302
May-96	1969
Jun-96	1561
Jul-96	1737
Aug-96	1897
Sep-96	1598
Oct-96	1631
Nov-96	1550
Dec-96	1343
Jan-97	1222
Feb-97	1568
Mar-97	1416
Apr-97	1325
May-97	2058
Jun-97	1585
Jul-97	1661
Aug-97	1470
Sep-97	1291
Oct-97	1882
Nov-97	1773
Dec-97	1697
Jan-98	1489
Feb-98	1626
Mar-98	1683
Apr-98	1470
May-98	2005
Jun-98	2084
Jul-98	1820
Aug-98	1783
Sep-98	1785
Oct-98	1921
Nov-98	1760
Dec-98	1619
Jan-99	1263
Feb-99	2047
Mar-99	2397
Apr-99	1802
May-99	2025
Jun-99	2137
Jul-99	1988
Aug-99	1899
Sep-99	1947
Oct-99	1960
Nov-99	2393
Dec-99	2257

Jan-00	1406
Feb-00	1468
Mar-00	1945
Apr-00	1881
May-00	2585
Jun-00	2472
Jul-00	1567
Aug-00	1620
Sep-00	1605
Oct-00	1560
Nov-00	1772
Dec-00	1201
Jan-01	1244
Feb-01	1507
Mar-01	1304
Apr-01	1108
May-01	2094
Jun-01	1643
Jul-01	1941
Aug-01	1634
Sep-01	1806
Oct-01	2356
Nov-01	1796
Dec-01	2055
Jan-02	1339

ITEM 7

**REGISTRATION TRANSACTION TIME  
2000/01 TARGETS**

Register a transaction against a Certificate of Title

Target 5.2 Da Average Days

Month	Days	Target
Jan-97	5.60	5.2
Feb-97	6.00	5.2
Mar-97	5.10	5.2
Apr-97	6.20	5.2
May-97	5.10	5.2
Jun-97	5.70	5.2
Jul-97	5.90	5.2
Aug-97	4.50	5.2
Sep-97	5.30	5.2
Oct-97	5.60	5.2
Nov-97	5.10	5.2
Dec-97	5.60	5.2
Jan-98	5.50	5.2
Feb-98	4.80	5.2
Mar-98	5.20	5.2
Apr-98	7.40	5.2
May-98	7.20	5.2
Jun-98	5.80	5.2
Jul-98	5.10	5.2
Aug-98	4.10	5.2
Sep-98	3.73	5.2
Oct-98	5.35	5.2
Nov-98	4.99	5.2
Dec-98	4.93	5.2
Jan-99	7.56	5.2
Feb-99	8.97	5.2
Mar-99	9.48	5.2
Apr-99	8.20	5.2
May-99	5.29	5.2
Jun-99	6.34	5.2
Jul-99	7.56	5.2
Aug-99	6.61	5.2
Sep-99	6.23	5.2
Oct-99	7.59	5.2
Nov-99	5.80	5.2
Dec-99	6.02	5.2
Jan-00	5.58	5.2
Feb-00	4.56	5.2
Mar-00	5.77	5.2
Apr-00	5.30	5.2
May-00	5.87	5.2
Jun-00	7.50	5.2
Jul-00	6.74	5.2

Aug-00	5.40	5.2
Sep-00	5.43	5.2
Oct-00	5.34	5.2
Nov-00	4.68	5.2
Dec-00	5.70	5.2
Jan-01	4.90	5.2
Feb-01	4.72	5.2
Mar-01	6.48	5.2
Apr-01	5.33	5.2
May-01	5.43	5.2
Jun-01	6.88	5.2
Jul-01	8.35	5.2
Aug-01	6.65	5.2
Sep-01	4.88	5.2
Oct-01	3.85	5.2
Nov-01	4.07	5.2
Dec-01	7.70	5.2
Jan-02	6.50	5.2

**ITEM 8 Register a Certificate of Title for large subdivisions**  
Target 5 Days

Month	Days	Target
Jan-97	5.60	5
Feb-97	5.40	5
Mar-97	4.90	5
Apr-97	5.60	5
May-97	5.40	5
Jun-97	4.30	5
Jul-97	5.60	5
Aug-97	7.20	5
Sep-97	4.70	5
Oct-97	5.00	5
Nov-97	4.00	5
Dec-97	5.20	5
Jan-98	5.10	5
Feb-98	4.90	5
Mar-98	5.00	5
Apr-98	4.40	5
May-98	5.20	5
Jun-98	4.50	5
Jul-98	5.40	5
Aug-98	5.20	5
Sep-98	5.50	5
Oct-98	5.50	5
Nov-98	5.00	5
Dec-98	4.90	5
Jan-99	6.50	5
Feb-99	4.20	5
Mar-99	4.20	5
Apr-99	4.30	5
May-99	4.50	5
Jun-99	4.80	5
Jul-99	4.70	5
Aug-99	5.10	5
Sep-99	5.10	5
Oct-99	4.70	5
Nov-99	4.40	5
Dec-99	5.10	5
Jan-00	6.30	5
Feb-00	6.00	5
Mar-00	5.50	5
Apr-00	6.00	5
May-00	4.60	5
Jun-00	4.00	5
Jul-00	5.00	5
Aug-00	6.50	5
Sep-00	4.60	5
Oct-00	4.30	5
Nov-00	4.80	5
Dec-00	4.80	5
Jan-01	6.40	5
Feb-01	6.30	5
Mar-01	6.50	5
Apr-01	7.50	5
May-01	6.00	5
Jun-01	7.80	5

Jul-01	5.00	5
Aug-01	5.40	5
Sep-01	5.00	5
Oct-01	5.10	5
Nov-01	4.30	5
Dec-01	4.40	5
Jan-02	5.30	5

### Government Land Sales

Jan-97	40
Feb-97	41
Mar-97	44
Apr-97	31
May-97	37
Jun-97	30
Jul-97	35
Aug-97	31
Sep-97	55
Oct-97	66
Nov-97	44
Dec-97	36
Jan-98	33
Feb-98	49
Mar-98	34
Apr-98	3
May-98	5
Jun-98	11
Jul-98	14
Aug-98	7
Sep-98	9
Oct-98	12
Nov-98	14
Dec-98	36
Jan-99	17
Feb-99	10
Mar-99	13
Apr-99	12
May-99	12
Jun-99	13
Jul-99	5
Aug-99	16
Sep-99	13
Oct-99	11
Nov-99	9
Dec-99	8
Jan-00	13
Feb-00	11
Mar-00	4
Apr-00	16
May-00	9
Jun-00	11
Jul-00	2
Aug-00	10
Sep-00	15
Oct-00	7
Nov-00	13
Dec-00	3
Jan-01	19
Feb-01	9
Mar-01	21
Apr-01	12
May-01	13
Jun-01	20
Jul-01	16
Aug-01	10
Sep-01	9
Oct-01	17
Nov-01	9
Dec-01	8
Jan-02	7



























